



**BRAVE**

Go the Winnebago Route to New Frontiers

**WINNEBAGO**

1972

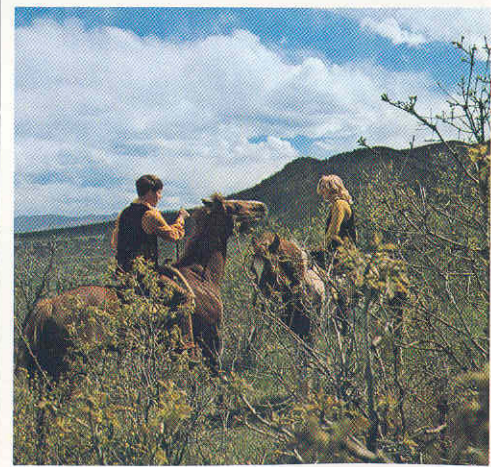
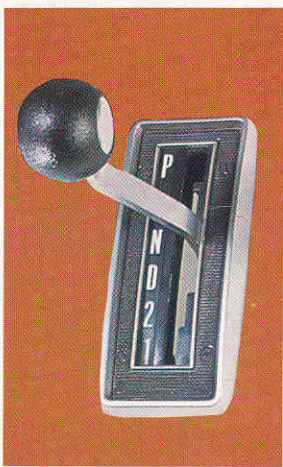
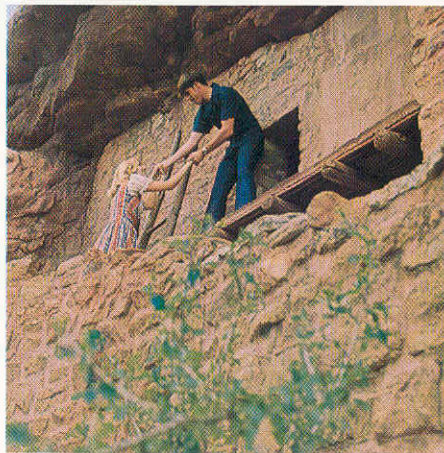
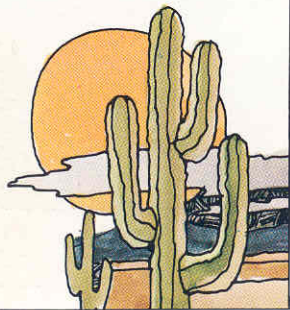
# EXPLORE THE GREAT FRONTIERS

From the east and south they came, those covered wagons moving west. Using oxen or horses they rode or they walked as the wagons rolled west. They forged and mastered the Platte and the Snake. Conquered the Oregon and Santa Fe Trails. They opened the Mormon to the Great Salt Lake. And crossed the Rockies where no roads led. Each day they braved an untamed land. They brought us today. And today leads west along the Winnebago route.

Now you can follow those pioneer trails right to the doorstep of yesterday. With your Winnebago BRAVE motor home you can climb the highest peaks or step foot in the depths of the great barren deserts. You can go the route, Winnebago style.

Select your BRAVE from three unique floor plans. There's the 18'3" "Mini-Winnie", a fully self-contained motor home loaded with features you just won't find in converted vans or stripped down models. There's no bigger bargain in the entire recreation vehicle industry.

There are two 20' 8" BRAVES. They're perfect for young families. For sportsmen. Or anyone who wants to challenge the open road to adventure. For the young at heart, a Winnebago BRAVE motor home will start you in the right direction along the Winnebago route.





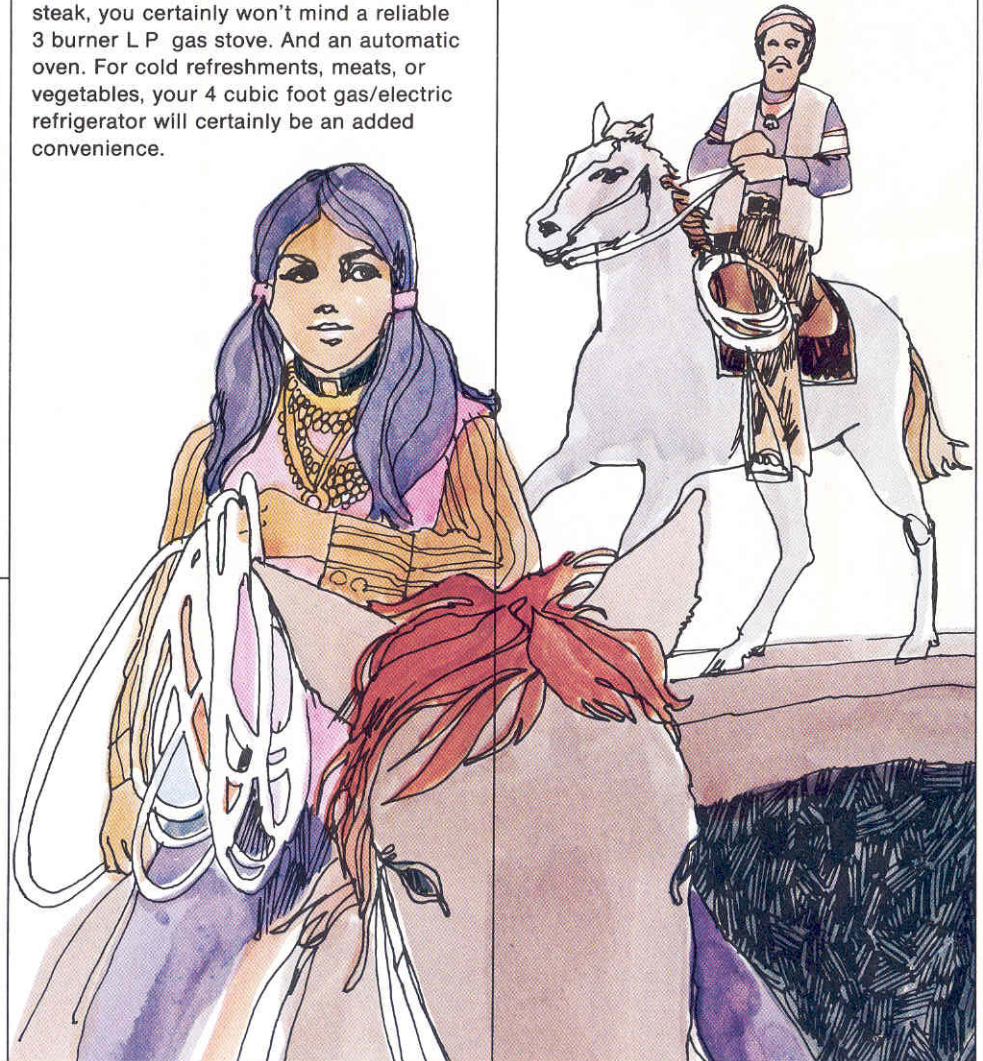
Those pioneer days of bed rolls and sleeping bags can be left to another era. All BRAVE motor homes provide unmatched sleeping comfort as standard equipment.

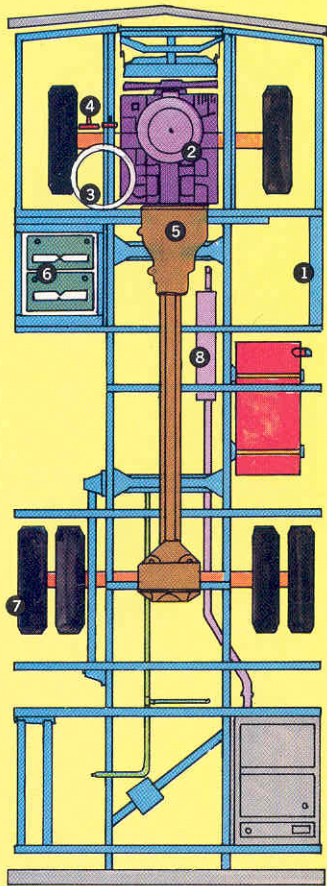
In both 20' 8" BRAVES, center or rear dinette floor plans, there's a front overhead bunk that folds easily in place. Thick foam mattresses offer relaxing comfort after a long day on horseback or after a trail bike ride. The dinette converts easily to a bed in all three BRAVES.

Campfire cooking has a romance all its own. But for beans 'n franks or pan fried steak, you certainly won't mind a reliable 3 burner L P gas stove. And an automatic oven. For cold refreshments, meats, or vegetables, your 4 cubic foot gas/electric refrigerator will certainly be an added convenience.

For freshening up after a full day, all color coordinated BRAVE baths feature a complete shower, 36 gallon pressurized fresh water system including a 6 gallon water heater, and a marine type toilet.

And that's just a sampling of all the standard equipment features you get on all BRAVE motor homes. See pages 4-9 for a complete list of all items. Then compare these features, item for item, with other motor homes at even higher list prices. You'll soon discover why a Winnebago BRAVE is your best motor home buy.

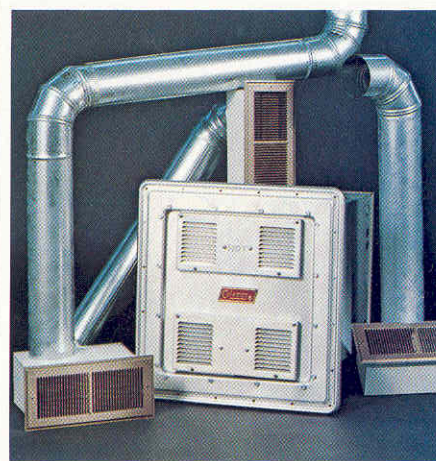




## CHASSIS:

All Winnebago BRAVE models: ① Are built on heavy duty motor home chassis; ② Offer V-8 engines (318 cubic inch Dodge on D-18, D-20, and D-20RD; 350 cubic inch Chevrolet on C-20, and C-20RD) ③ Provide power steering, ④ Power brakes ⑤ Automatic transmission, ⑥ Dual 70 amp batteries, and ⑦ Dual rear wheels ⑧ Emission control exhaust system.

Below: Forced air ducted heating system



## COLORS

A blazing sunset inspired our BRAVE interior color schemes this year. Bright, bold, and lively color schemes.

Accents include washable Cherokee Oak wall paneling. And Apple Green appliances with matching color countertops and contrasting deep walnut trim. Weavers Antique Avocado drapes and a striking gold bath.

For 1972, it's a bold, exciting, new world of color.

## STANDARD EQUIPMENT

### Safety Features:

- Clearance lights comply with laws in every state
- Backup lights, parking lights, turn signals with safety flashers
- Extra side-mounted turn signals
- Seat belts comply with Federal regulations
- Door lock complies with National Highway Safety Bureau standard number 208
- Fire extinguisher
- Tinted front windshield

### Exterior Features:

- Insulated 9-ply Thermo-Panel® Construction floor, side walls, and door
- Pre-finished aluminum exterior and underbelly
- Sky light roof vent
- 25 ft. rubberized 110-volt power cord permanently installed
- Slider windows with screens
- Rear storage trunk with 12-volt light and lock (20' Braves only)
- Two large side mirrors
- Glide away step with self-cleaning mesh tread
- Front access to water fill and oil fill, windshield washer fluid

### Interior Features:

- Pre-finished washable paneled interior
- Roomy drawers for storage
- Attractive curtains on full length positive track slides for all windows
- Convenient 110-volt duplex outlets on separate 110-volt wiring system
- 12-volt interior lights
- Complete set of 12-volt bulbs
- Hollow core cabinet doors
- Forced air ducted heating system

### Bathroom Features:

- Marine toilet with 30 gallon holding tank on the D-20RD/C-20RD; 21 gallon tank on D-20/C-20
- 30 gallon pressurized fresh water system with pressure pump
- 6-gallon pressurized hot water heater
- Lavatory
- Push button phone head shower
- Sewer hose
- Fiberglass pan with shower curtain

### Kitchen Features:

- 3-burner stove with automatic oven
- Consoweld counter top and back splash in galley area
- Overhead cabinets above dinette
- Stainless steel sink
- 4 cu. ft. gas/electric refrigerator

### Sleeping Features:

- Wardrobe
- Triple fold lounge
- Bedroom privacy curtain (20' Braves only)
- Gaucho and dinette converts into double bed

### Dinette Features:

- Dinette seats
- Dinette converts to bed

### Driver's Compartment:

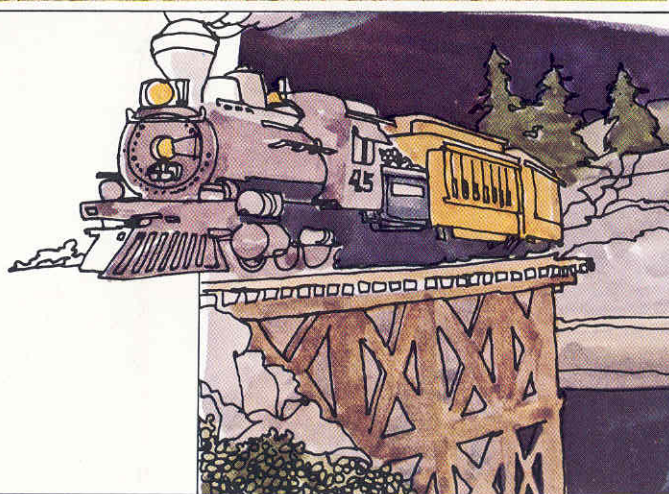
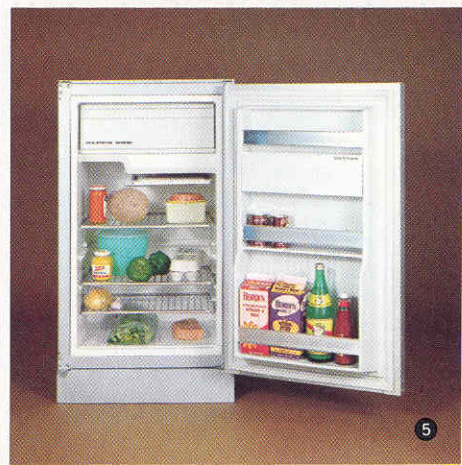
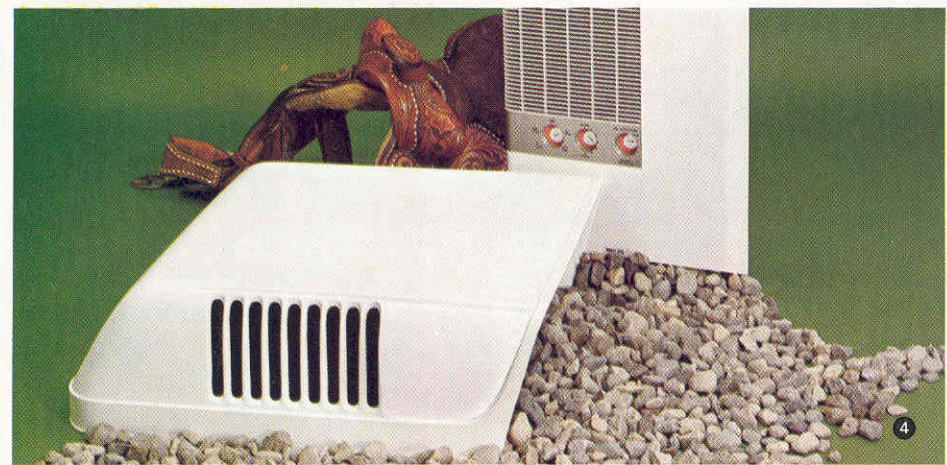
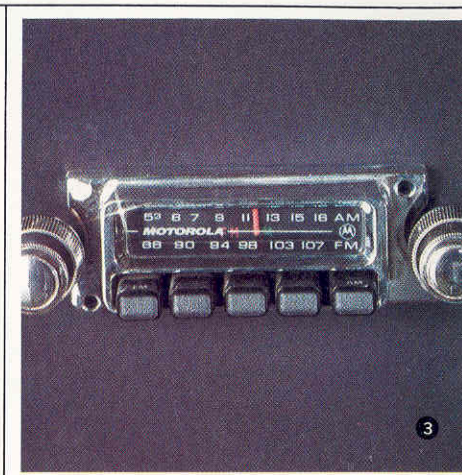
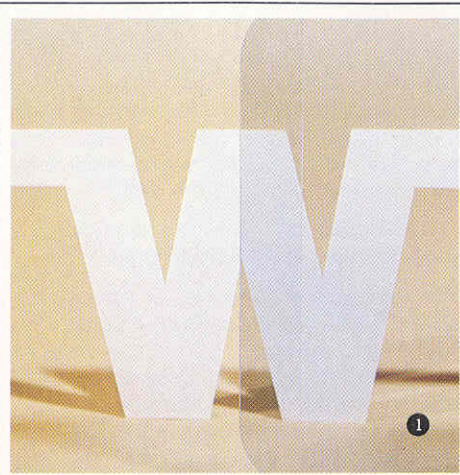
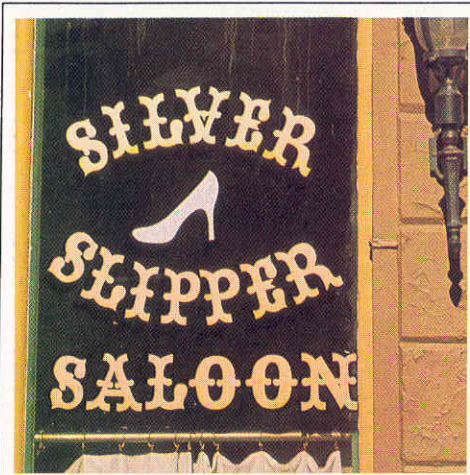
- Padded dash
- Vinyl blackout curtain for driver's compartment
- Deluxe swivel contoured bucket seats upholstered with heavy duty vinyl for driver and co-pilot
- Removable instrument panel (some gauges are shown as options)
- Cigarette lighter
- Map light
- Inside rear view mirror
- Recessed glove compartment
- Twin wall mounted ashtrays

### Automotive:

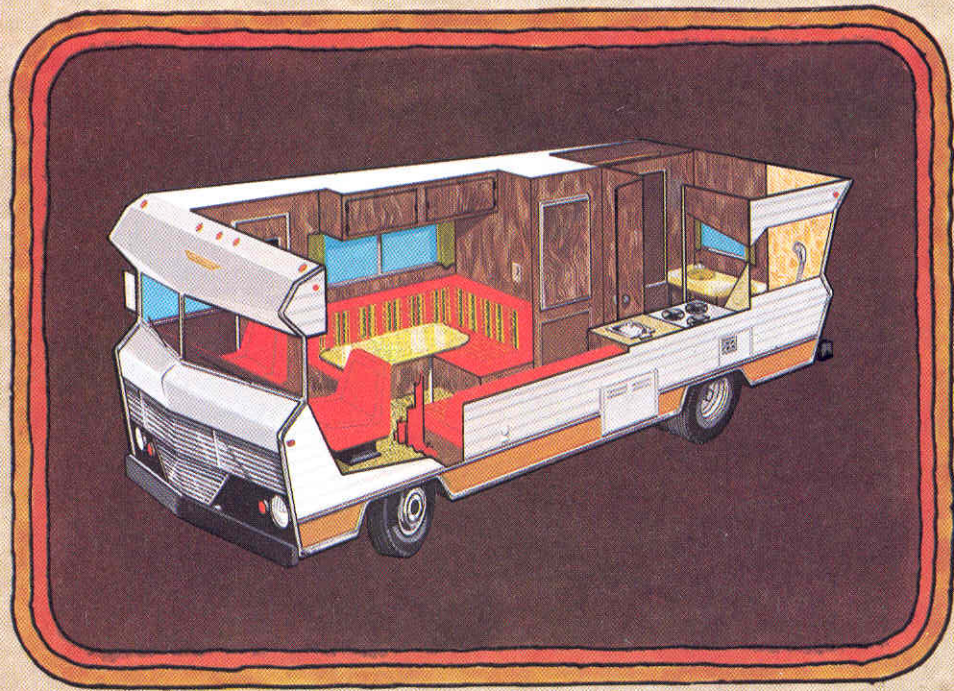
- 318 cubic inch Dodge V-8 engine (D-18, D-20, D-20RD)
- 350 cubic inch Chevrolet V-8 engine (C-20, C-20RD)
- Power steering
- Power brakes
- Automatic transmission
- Twin 70 amp heavy duty batteries
- Heavy duty alternator
- 4 adjustable defroster vents with separate blower
- Mechanical jack
- Spare wheel
- Fresh-air automotive heater with separate blower
- Windshield washers
- Inside rear view mirror

### Utilities:

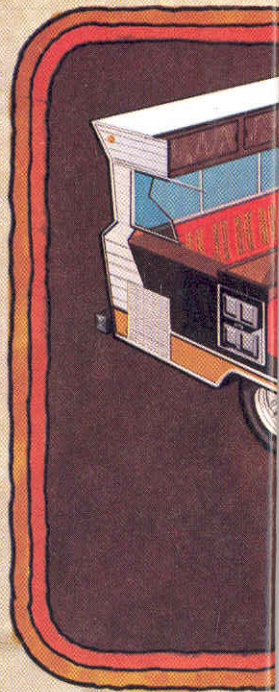
- City water hook-up
- 12-volt changeover lighting system operates from chassis battery or external 110-volt supply
- Double 20 lb. LP gas bottles
- Electrical 12-volt converter



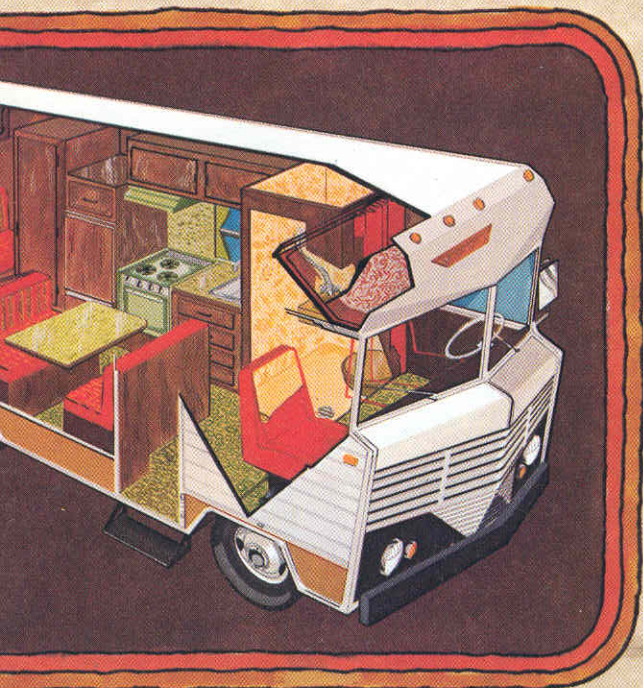
# 18 BRAVE



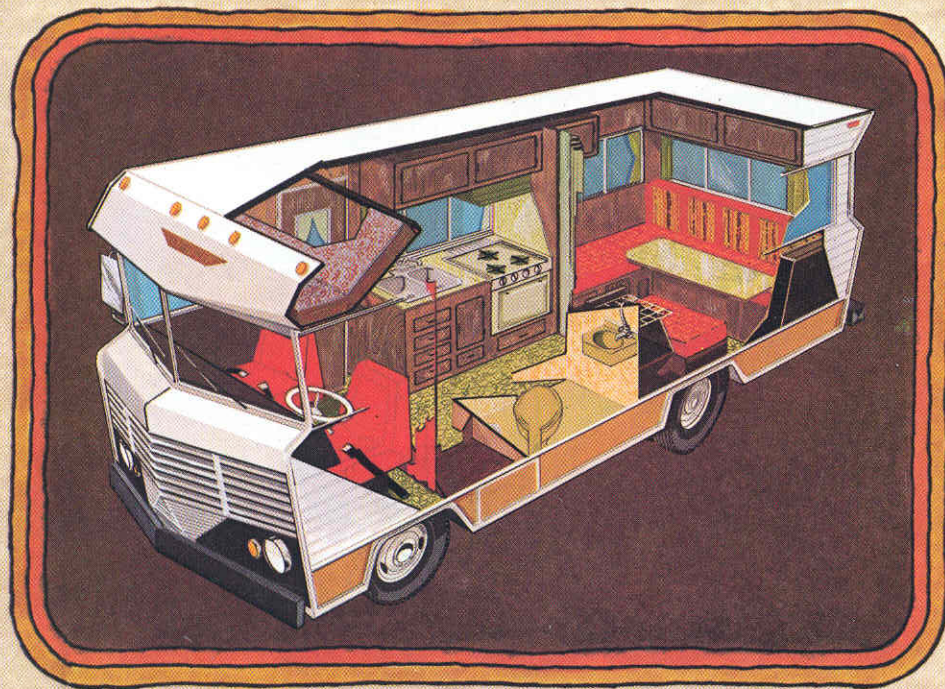
2



**D BRAVE**



**20 RD BRAVE**



## D-18

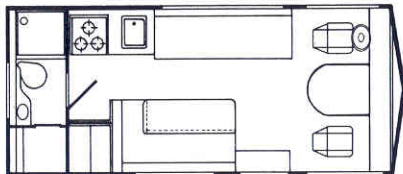
Let's face it. Delivery vans were designed and built for hauling groceries to grandma. Not for motor home highway travel.

When we designed and built the D-18 BRAVE, we chose a heavy duty Dodge motor home chassis. A rugged chassis with dual rear wheels for road stability and load capacity. With complete visibility of the road ahead, you'll drive with the peace of mind that only a vehicle designed as a real motor home can provide. Why should you accept anything less?

Cross country or around the state, you'll be powered by a big V-8, 318 cubic inch Dodge engine with automatic transmission, power brakes, and power steering. Your D-18 BRAVE will handle as easily as the family station wagon. Gals, in particular, find the D-18 a pleasure to drive.

Driving features aside, perhaps the most impressive thing about our new D-18 is the roomy floor plan. You'll find plenty of room to move around. Room to relax. Room to store the basic essentials for those short weekend trips. Or when you're bound on those longer vacation tours. We haven't wasted an inch of space. And we didn't cut back on standard equipment features that make motor home travel a pure and simple delight.

Before you decide on something less, test drive the new D-18 BRAVE. Then honestly shop and compare our D-18 BRAVE with converted delivery vans or other stripped down models. You'll discover that dollar for dollar, nut for bolt, the Winnebago D-18 BRAVE is your best motor home buy.



## D-20/ C-20

Winnebago has taken several of the best features of our larger motor homes; then designed and built a sporty 20'8" BRAVE with standard equipment items you'd expect to pay extra for. But don't.

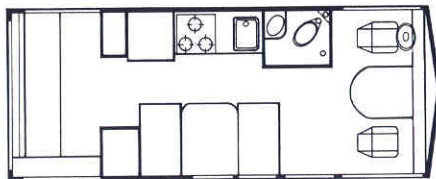
The 20' 8" BRAVE offers a cozy floor plan that puts emphasis on total liveability. Preparing a 4 course meal, snack, or the day's stringer of fresh rainbow trout is a real snap. Your galley is equipped with a 3 burner stove, automatic oven, stainless steel sink, and 4 cubic foot gas/electric refrigerator.

And if it gets a bit nippy some evening high in the Rockies, just switch on your forced air ducted heating system. It'll provide the comfortable warmth of a ski lodge fireplace.

For after dinner socializing, clear the dishes and set up for a full evening of cards at the dinette. Or stretch out on the rear gauchio and catch up on your reading. That's the beauty of your BRAVE motor home. It can reflect any mood you're in.

At night, fold down the rear gauchio, overhead front bunk, or dinette. There are comfortable sleeping accommodations for up to six people. (Eight with an optional rear bunk).

Whatever you want. It's close at hand. Built-in. Ready to use. And ready to enjoy those miles of high adventure along the network of roads that make up the Winnebago route.



## D-20RD/C-20RD

The same outstanding motor home features of our popular 20' 8" BRAVE are yours in a rear dinette floor plan. This floor plan offers you a full width rear dinette and social area. It's your answer to a built-in patio.

And this optional rear dinette floor plan is yours to select at no additional price.

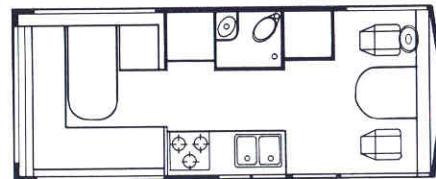
Young families with children find the rear dinette BRAVE a special kind of motor home. Everyone can sit around the dinette table before, during or after dinner. As dad rolls out the highway map, everyone can help select tomorrow's exciting journey along the Winnebago route.

When morning comes, the smell of bacon frying and coffee brewing will ready everyone for a new day of adventure. Preparing meals is no chore in the complete galley that offers plenty of overhead cabinet space.

In both floor plans, the driver's compartment is an inviting place. With plush swivel bucket seats available for both driver and co-pilot, you can hardly wait to turn the key.

On down the road, that big Dodge V-8, 318 cubic inch engine or Chevrolet 350 cubic inch engine with automatic transmission, power brakes, and power steering lets the miles roll by. Smoothly. Effortlessly.

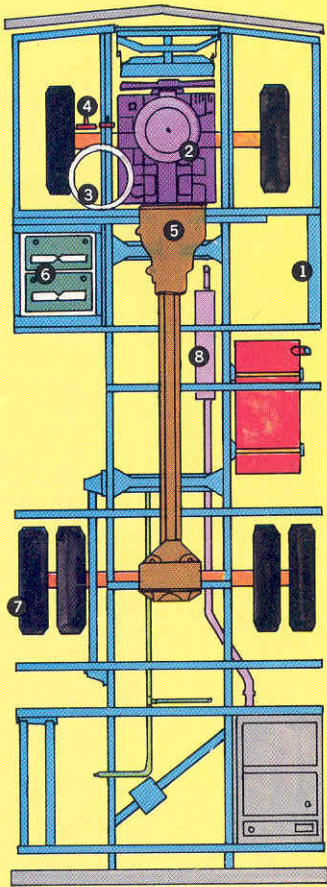
It's a BRAVE new world. For the young at heart. For those wanting a new world of adventure. And with any BRAVE model, you won't give up an ounce of the comfort features that make motor homing the effortless way to travel.



This year you may select a Dodge or Chevrolet motor home chassis for either 20 foot BRAVE model. For ease in selecting appropriate optional equipment features, we have used the letter "C" to represent Chevrolet chassis and the prefix "D" for the Dodge chassis.



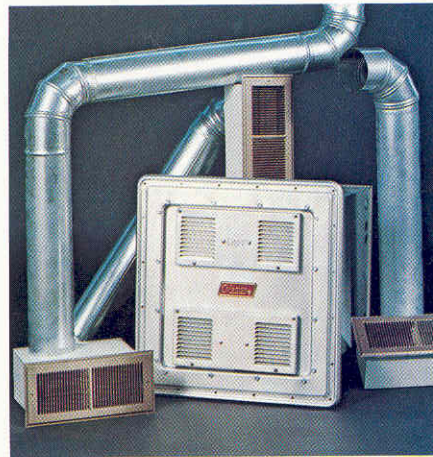




## CHASSIS:

All Winnebago BRAVE models: ① Are built on heavy duty motor home chassis; ② Offer V-8 engines (318 cubic inch Dodge on D-18, D-20, and D-20RD; 350 cubic inch Chevrolet on C-20, and C-20RD) ③ Provide power steering, ④ Power brakes ⑤ Automatic transmission, ⑥ Dual 70 amp batteries, and ⑦ Dual rear wheels ⑧ Emission control exhaust system.

Below: Forced air ducted heating system



## COLORS

A blazing sunset inspired our BRAVE interior color schemes this year. Bright, bold, and lively color schemes.

Accents include washable Cherokee Oak wall paneling. And Apple Green appliances with matching color countertops and contrasting deep walnut trim. Weavers Antique Avocado drapes and a striking gold bath.

For 1972, it's a bold, exciting, new world of color.

## STANDARD EQUIPMENT

### Safety Features:

- Clearance lights comply with laws in every state
- Backup lights, parking lights, turn signals with safety flashers
- Extra side-mounted turn signals
- Seat belts comply with Federal regulations
- Door lock complies with National Highway Safety Bureau standard number 208
- Fire extinguisher
- Tinted front windshield

### Exterior Features:

- Insulated 9-ply Thermo-Panel® Construction floor, side walls, and door
- Pre-finished aluminum exterior and underbelly
- Sky light roof vent
- 25 ft. rubberized 110-volt power cord permanently installed
- Slider windows with screens
- Rear storage trunk with 12-volt light and lock (20' Braves only)
- Two large side mirrors
- Glide away step with self-cleaning mesh tread
- Front access to water fill and oil fill, windshield washer fluid

### Interior Features:

- Pre-finished washable paneled interior
- Roomy drawers for storage
- Attractive curtains on full length positive track slides for all windows
- Convenient 110-volt duplex outlets on separate 110-volt wiring system
- 12-volt interior lights
- Complete set of 12-volt bulbs
- Hollow core cabinet doors
- Forced air ducted heating system

### Bathroom Features:

- Marine toilet with 30 gallon holding tank on the D-20RD/C-20RD; 21 gallon tank on D-20/C-20
- 30 gallon pressurized fresh water system with pressure pump
- 6-gallon pressurized hot water heater
- Lavatory
- Push button phone head shower
- Sewer hose
- Fiberglass pan with shower curtain

### Kitchen Features:

- 3-burner stove with automatic oven
- Consoweld counter top and back splash in galley area
- Overhead cabinets above dinette
- Stainless steel sink
- 4 cu. ft. gas/electric refrigerator

### Sleeping Features:

- Wardrobe
- Triple fold lounge
- Bedroom privacy curtain (20' Braves only)
- Gaucho and dinette converts into double bed

### Dinette Features:

- Dinette seats
- Dinette converts to bed

### Driver's Compartment:

- Padded dash
- Vinyl blackout curtain for driver's compartment
- Deluxe swivel contoured bucket seats upholstered with heavy duty vinyl for driver and co-pilot
- Removable instrument panel (some gauges are shown as options)
- Cigarette lighter
- Map light
- Inside rear view mirror
- Recessed glove compartment
- Twin wall mounted ashtrays

### Automotive:

- 318 cubic inch Dodge V-8 engine (D-18, D-20, D-20RD)
- 350 cubic inch Chevrolet V-8 engine (C-20, C-20RD)
- Power steering
- Power brakes
- Automatic transmission
- Twin 70 amp heavy duty batteries
- Heavy duty alternator
- 4 adjustable defroster vents with separate blower
- Mechanical jack
- Spare wheel
- Fresh-air automotive heater with separate blower
- Windshield washers
- Inside rear view mirror

### Utilities:







- City water hook-up
- 12-volt changeover lighting system operates from chassis battery or external 110-volt supply
- Double 20 lb. LP gas bottles
- Electrical 12-volt converter

# OPTIONAL EQUIPMENT

This year Winnebago makes it easy for you to select the optional equipment items that offer maximum comfort and convenience. Based on years of actual customer orders, we now offer optional equipment packages and optional convenience groups of those items most frequently asked for.

The color codes used below will help you identify the items available in option packages A through F. For example, if you select option package "C", you get all the items indicated in light blue on the accompanying chart.

You may, however, select any single listed option or any single option group described.

Option package A	
Option package B	
Option package C	
Option package D	
Option package E	
Option package F	

Option	D-18						D-20 C-20						D-20RD C-20RD					
	A	B	C	D	E	F	A	B	C	D	E	F	A	B	C	D	E	F
<b>Driver's Convenience Group</b>																		
<i>Armrests</i>																		
<i>Headrests</i>																		
<i>Sunvisors</i>																		
<i>Beverage tray</i>																		
<b>⑥ Tire Group</b>																		
<i>Spare tire carrier</i>																		
<i>Spare tire cover</i>																		
<i>Spare tire</i>																		
<b>Power Convenience Group</b>																		
<i>Power stove hood</i>																		
<i>Power bath vent</i>																		
<i>Medicine chest</i>																		
<b>Power Group</b>																		
<i>Battery gauge</i>																		
<i>Hourmeter</i>																		
<b>LP Group</b>																		
<i>30# LP tank</i>																		
<i>Automatic LP regulator</i>																		
<i>30,000 BTU furnace</i>																		
<b>④ 110 Volt air conditioning</b>																		
<i>AM radio</i>																		
<i>Double co-pilot seat</i>																		
<i>Front wrap curtain</i>																		
<b>⑦ 220 Amp battery</b>																		
<b>⑤ 6 cubic foot refrigerator</b>																		
<i>Carpeting</i>																		
<i>Bolsters</i>																		
<b>⑧ 2500 Watt Onan generator</b>																		
<i>Auxiliary gas tank*</i>																		
<i>Screen door</i>																		
<i>Rear bunk</i>																		
<i>Trailer hitch</i>																		
<i>Wire and gas line</i>																		
<i>Front bunk</i>																		
							standard on 20' BRAVES											
	* available on C-20 and C-20RD only.																	

Optional equipment items listed below are available for purchase individually or in combination with any of the option packages or convenience groups.

- Bunk ladder
- Roll out side awning
- 4000 Watt Onan generator (20' Braves only)
- Galley extension (D-20 /C-20 only)
- ① Tinted glass
- ③ AM-FM radio (20' Braves only)
- Stereo tape (20' Braves only)
- FM stereo tape (20' Braves only)
- Monomatic "A" toilet (20' Braves only)
- Monomatic "W" toilet (20' Braves only)
- Limited slip rear axle
- ② Luggage rack and ladder
- Snow tire exchange per tire
- Automotive air
- TV antenna
- Front overhead cabinet (standard on D-18)



All descriptive and pictorial representation of the products in this brochure are believed to be current at the time of publication. However, due to changes in suppliers, design and production, accuracy cannot be guaranteed. Therefore, equipment, colors, material specifications and model availability are subject to change without notice. Please contact your Winnebago dealer for current model specifications.

\*Thermo-Panel and Kap Pickup Cover are registered trademarks of Winnebago Industries, Inc.

\*\*Styrofoam is a registered trademark of the Dow Chemical Company.

# WINNEBAGO.

AUTHORIZED DEALER

Winnebago Industries, Inc., designs, engineers, and builds a complete line of outstanding recreation vehicles. With the nation's largest and strongest network of dealers, Winnebago commands an enviable reputation for product availability, quality workmanship, and service. You'll find an authorized dealer close at hand no matter where you might be traveling.

Winnebago is a publicly owned company and in 1970 began trading its stock on the New York Stock Exchange. All products are backed by a financially strong and well respected company that continues in its role as the industry leader.

Winnebago continues to outsell all other motor home manufacturers. The reason is simple enough. We offer you the best recreation vehicle at the lowest possible price. Winnebago combines raw material buying power with mass production efficiency and vertical integration. Vertical integration simply means that Winnebago manufactures most of its own component parts. That saves money, and insures that all components meet our own high standards of quality and workmanship.

Whether you're a newcomer to the recreation vehicle field, or a seasoned veteran, there's a Winnebago product for you. When you go the Winnebago route, you've purchased the finest recreation vehicle that money can buy.

### THERMO-PANEL\* CONSTRUCTION, A WINNEBAGO EXCLUSIVE

Winnebago pioneered the development of this strong, lightweight and effective fabricating process. Exterior pre-finished aluminum and pre-finished interior paneling are sandwiched and permanently bonded to a core of Styrofoam\*\* brand foam insulation. This process offers excellent insulating properties and insures that your Winnebago unit will be warmer in the winter; cooler in the summer.



Winnebago Industries, Inc., Forest City, Iowa 50436  
Copyright 1971

## Winnebago manufactures a full line of outstanding recreation vehicles.

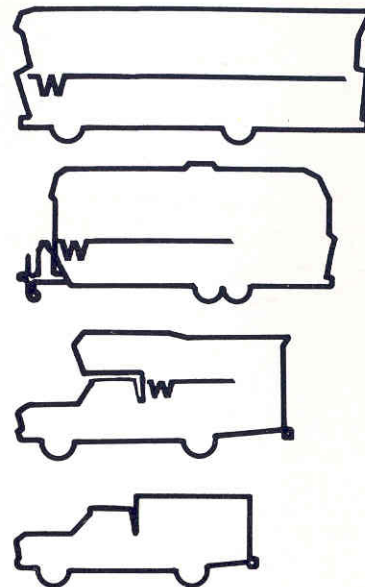
**CHIEFTAIN:** Six distinctively elegant motor home floor plans are available in the exclusive CHIEFTAIN line. For the ultimate in motor home travel luxury, the Winnebago route leads to CHIEFTAIN, the top of the line in motor home living.

**INDIAN:** Winnebago offers a choice of two outstanding INDIAN motor home models. Either model offers you more comfort and convenience features as standard equipment than any other motor home at a comparable price.

**TRAVEL TRAILERS:** Seven trailer lengths in ten versatile floor plans await your personal inspection.

**CAMPER COACHES:** Winnebago offers the perfect camper coach for your individual needs.

**KAP PICKUP COVERS:** Because we offer more models, there's a Kap\* Pickup Cover that will fit your specific need.



When you buy Winnebago, you're automatically eligible for membership in Winnebago International Travelers Club. W.I.T. is your chance to join in the total fun of recreation vehicle living.

Your W.I.T. membership also entitles you to big savings on recreation vehicle insurance coverage. And discounts on a growing number of items from sportswear to campgrounds. In addition, every W.I.T. member receives a monthly newspaper to keep everyone informed of the latest local, national, and international happenings. W.I.T. is just another nice thing about going the Winnebago route.

Architectural wonders achieved during the Great Pueblo period (1100-1300 A.D.) are featured on our BRAVE brochure cover. The culture of Cliff Dwelling Indians who once inhabited our American Southwest will make an interesting stop along the Winnebago route. Our D-18 BRAVE was photographed on location at the Manitou Cliff Dwellings Museum just outside Manitou Springs, Colorado.

### YOUR WINNEBAGO GUARANTEE.

Each new Winnebago motor home, travel trailer, camper coach, or Kap\* Pickup Cover using our exclusive Thermo-Panel\* Construction process is GUARANTEED against defects in lamination for the lifetime of the product to the original purchaser.