

# 1977-1978 Wiring and Vacuum Diagrams

- [01 - Fuse Panel](#)
- [02 - Lamp Bulb Data](#)
- [03 - Printed Circuit \(Tell-Tale Cluster\)](#)
- [04 - Vacuum Circuits](#)
- [05 - Air Conditioner & Heater Wiring Circuit](#)
- [06 - Cruise Control Wiring Circuit](#)
- [07 - Diesel Glow Plug Wiring Circuit](#)
- [08 - Electronic Load Leveler Wiring Circuit](#)
- [09 - Electronic Spark Selction System Wiring Circuit](#)
- [10 - Fuel Economy Indicator System Wiring Circuit](#)
- [11 - Guide-Matic Wiring Circuit](#)
- [12 - Illuminated Door Locks Wiring Circuit](#)
- [13 - Power Seat Back Recliner Wiring Circuit](#)
- [14 - Power Door Locks Wiring Circuit \(Except Automatic\)](#)
- [15 - Power Door Locks Wiring Circuit \(Automatic\)](#)
- [16 - Power Sun Roof Wiring Circuit](#)
- [17 - Power Trunk Release Wiring Circuit](#)
- [18 - Power Seats Wiring Circuit \(Six Way\)](#)
- [19 - Rear Window Defogger Wiring Circuit](#)
- [20 - Power Windows Wiring Circuit](#)
- [21 - Power Trunk Closing Unit](#)
- [22 - Seat Belt Warning Wiring Circuit](#)
- [23 - Theft Deterrent Wiring Circuit](#)
- [24 - Windshield Wiper Wiring Circuit \(Controlled Cycle\)](#)
- [25 - Twilight Sentinel Wiring Circuit](#)
- [26 - Electronic Fuel Injection Wiring Circuit](#)
- [27 - Trip Computer Wiring Circuit](#)
- [28 - Body Wiring Circuit](#)
- [29 - Chassis Wiring Circuit 1977](#)
- [30 - Chassis Wiring Circuit 1978](#)

## 01 - Fuse Panel

[Back to the top](#)

### Flasher Location

In the fuse block

### Fuse Block Location

Under dash panel, left of steering column.

### Circuit Brakers

Headlights	Headlight Switch	C.B.
Sun Roof	Circuit	C.B.
W/S Wiper	W/S Wiper Motor	C.B.
Read Defogger (grid type)	Lower Steering Column	C.B.
Twilight Sentinel	Integral W/Amplifier	C.B.

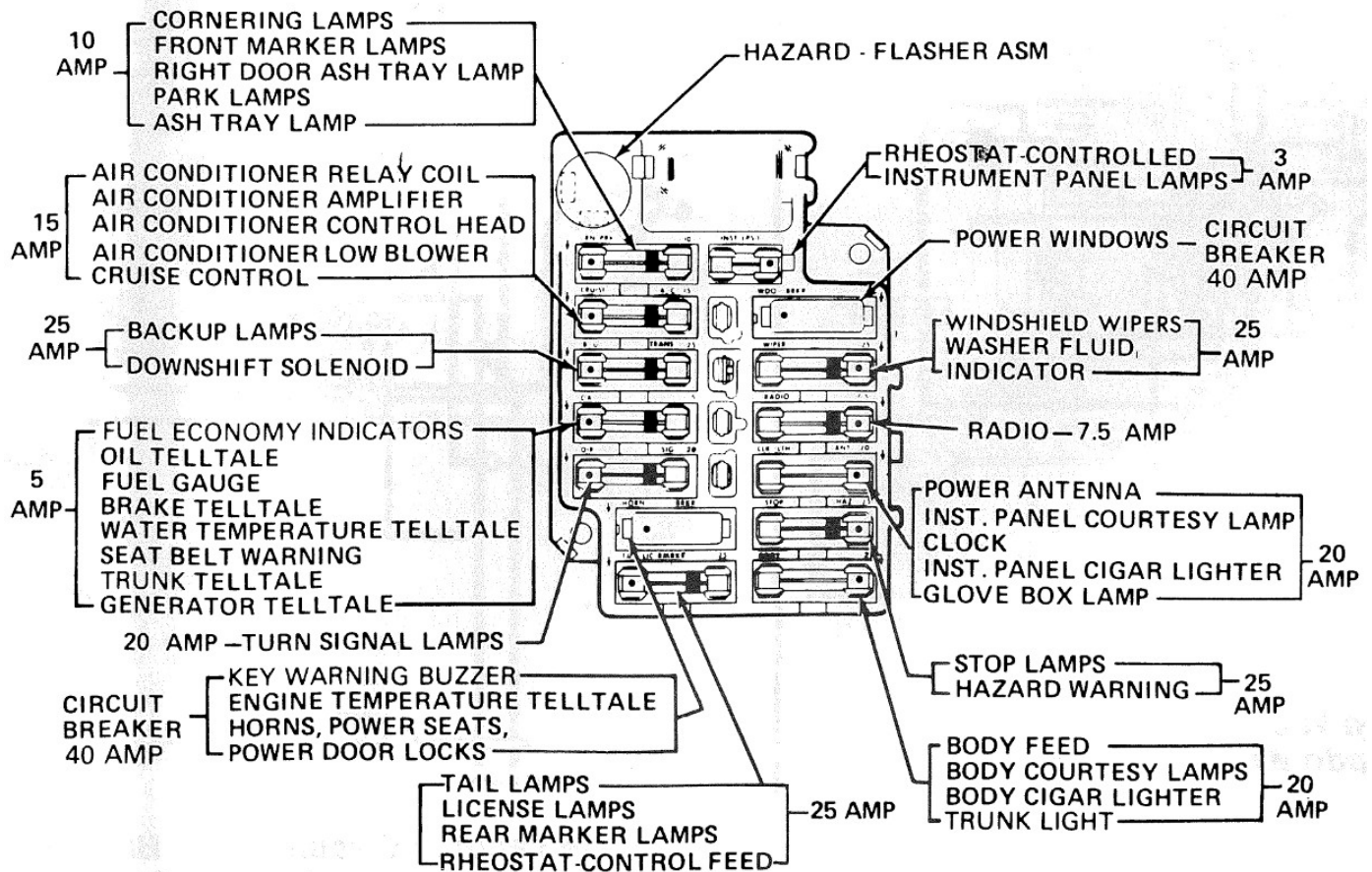


Figure 1-1 - Fuse Panel

## 02 - Lamp Bulb Data

[Back to the top](#)

### Location

Function	Bulb number
A/C Control	194
Accessory Switch & Ash Tray Lights	1445
Back-up Lights	1156
Clock	1895
Cornering Lights	1156
Courtesy Lights	
Doors & Dome Lights	562
Reading & Map Lights	1004
Instrument Panel	906
Cruise Control Switch & Indicator Lights	161
Door Lock Lights	558
Fuel Economy Indicator	161
Glove Box Light	1816
Headlights	
Outer	4652
Inner	4651
Headlight Switch	1816
High Beam Indicator	194
Instrument Cluster Lights	194
License Plate Light	194

Park & Turn Signal	1157NA
1977	1157
1978	1895
Radio Dial Light	1445
Rear Defogger Indicator	161
Shift Indicator	194A
Side Marker Lights	194
Front	1157
Rear	194
Stop, Tail & Turn Signal Light	1157
Tell Tale & Warning Lights	194
Trunk Light	1003
Trunk Open Indicator	161
Turn Signal Indicator	194
Vanity Mirror	562
W/S Washer Fluid Indicator	161
W/S Wiper Switch Light	194

### 03 - Printed Circuit (Tell-Tale Cluster)

[Back to the top](#)

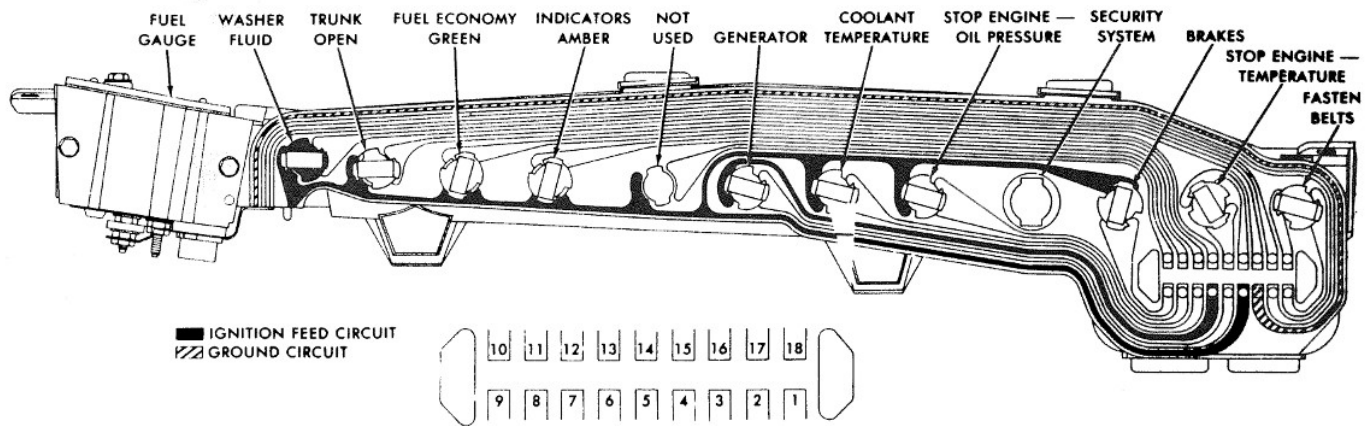


Figure 3-1 - Printed Circuit (Tell-Tale Cluster)

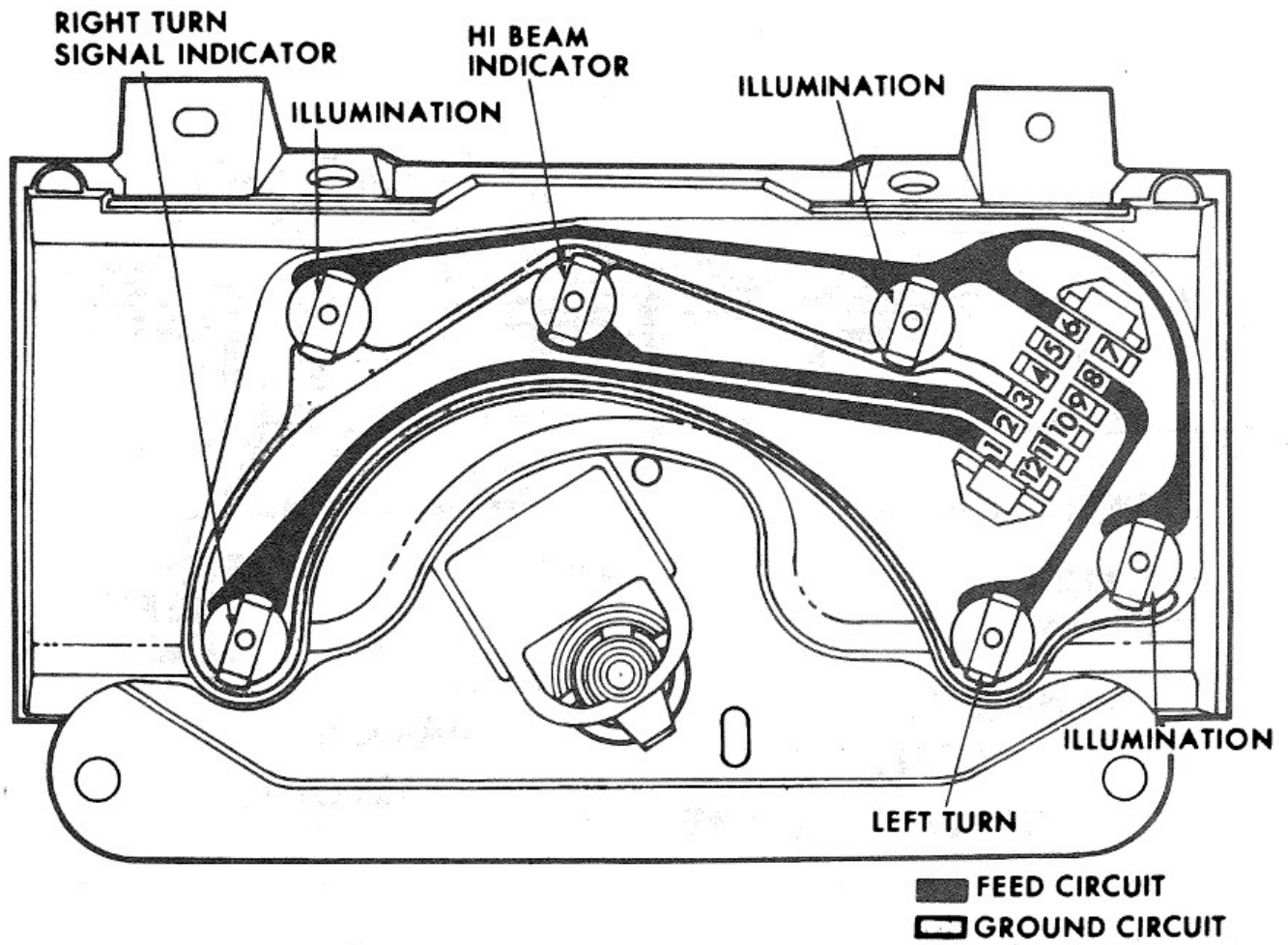


Figure 3-2 - Printed Circuit (Speedometer Cluster)

## 04 - Vacuum Circuits

[Back to the top](#)

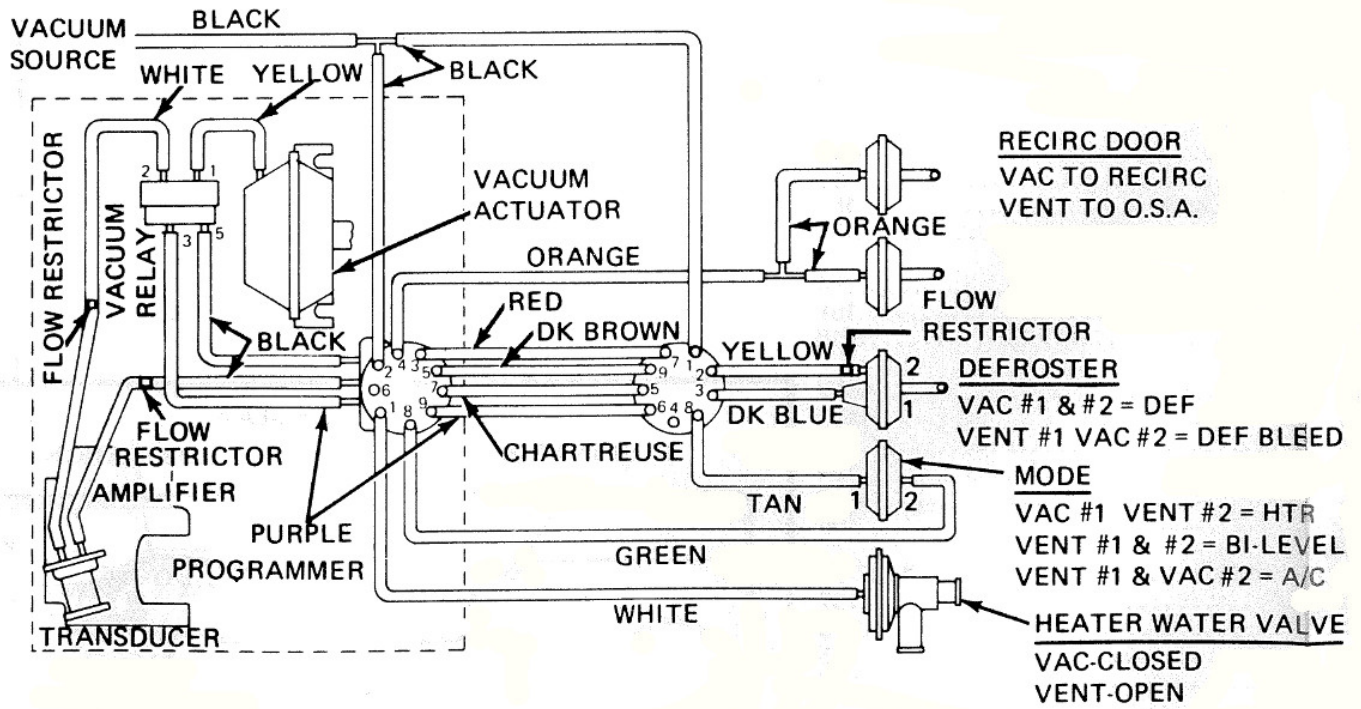


Figure 4-1 - Air Conditioner & Heater Vacuum Circuit

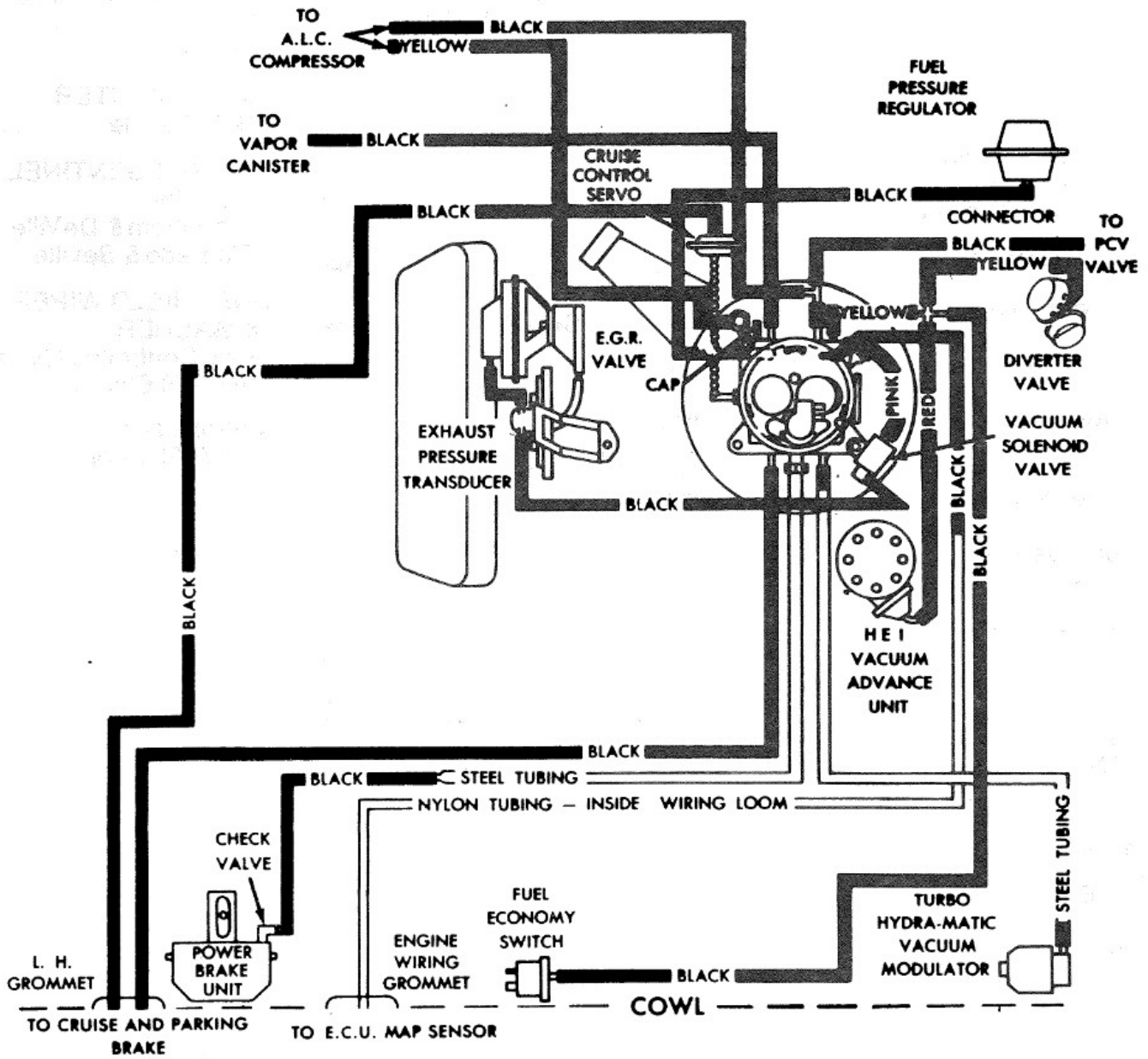


Figure 4-2 - Engine Vacuum Circuit. 1977 Seville Except Calif.

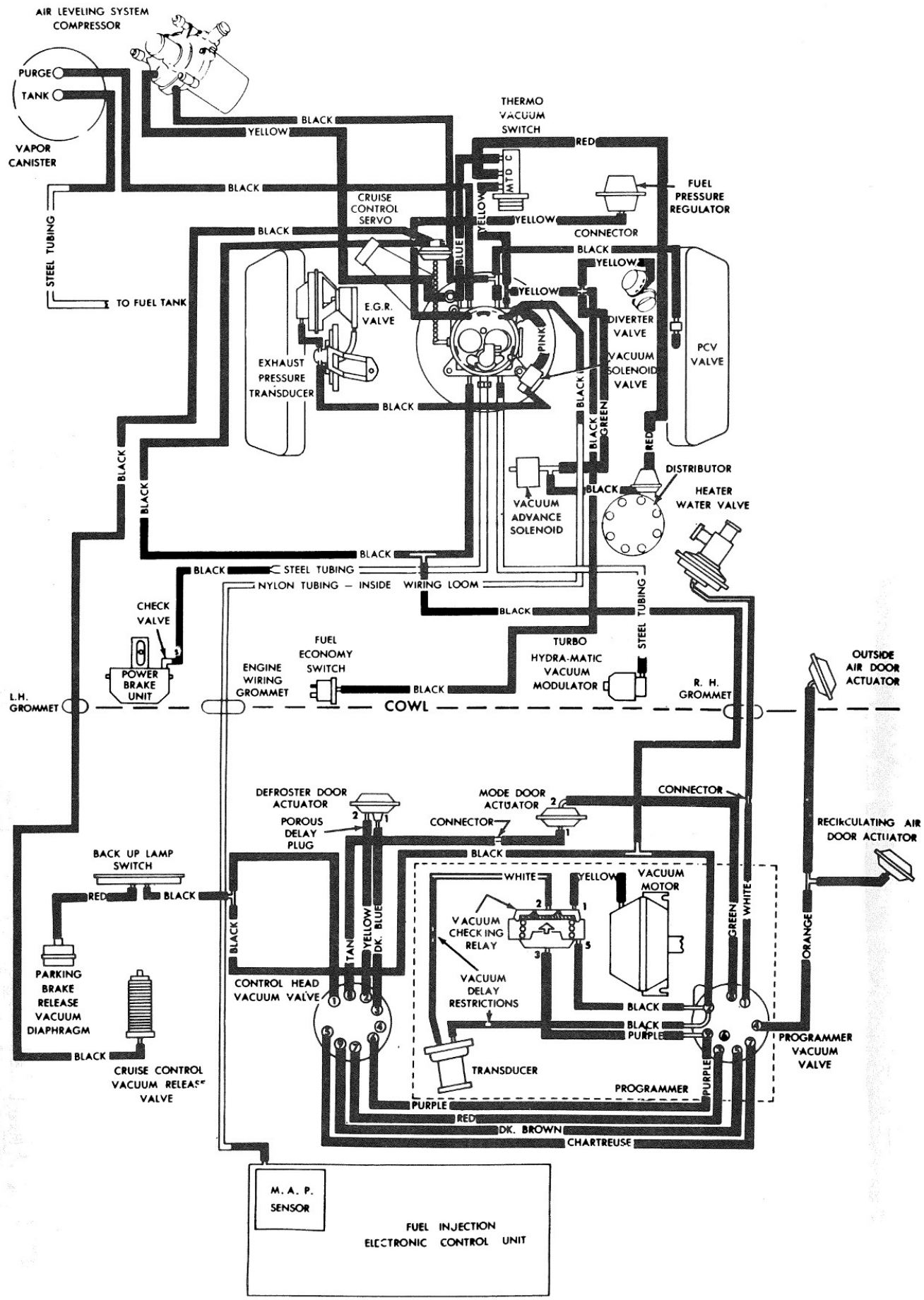


Figure 4-3 - Complete Vacuum Circuit. 1977 Seville Calif.

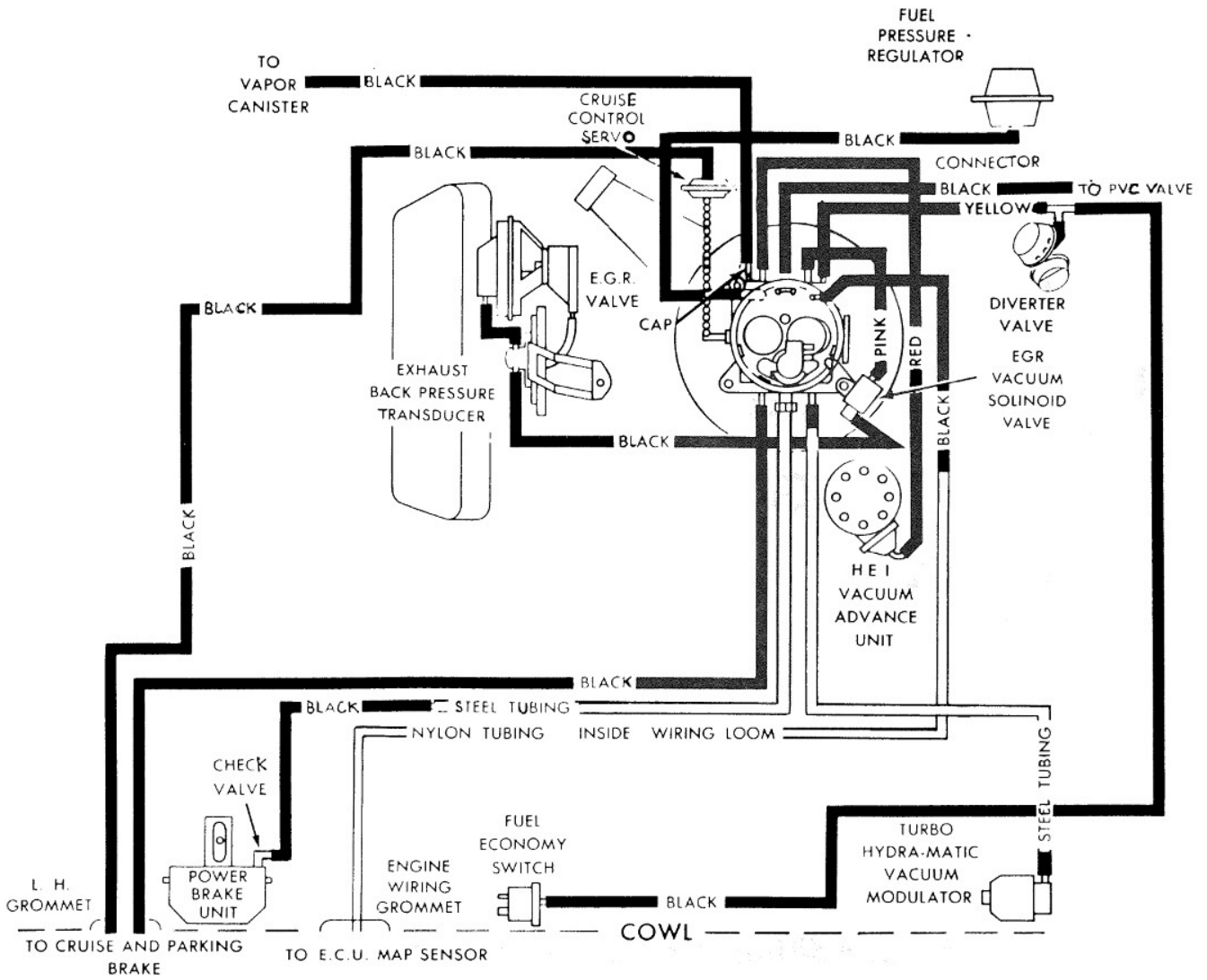


Figure 4-4 - Engine Vacuum Circuit. 1978 Seville Except Calif.



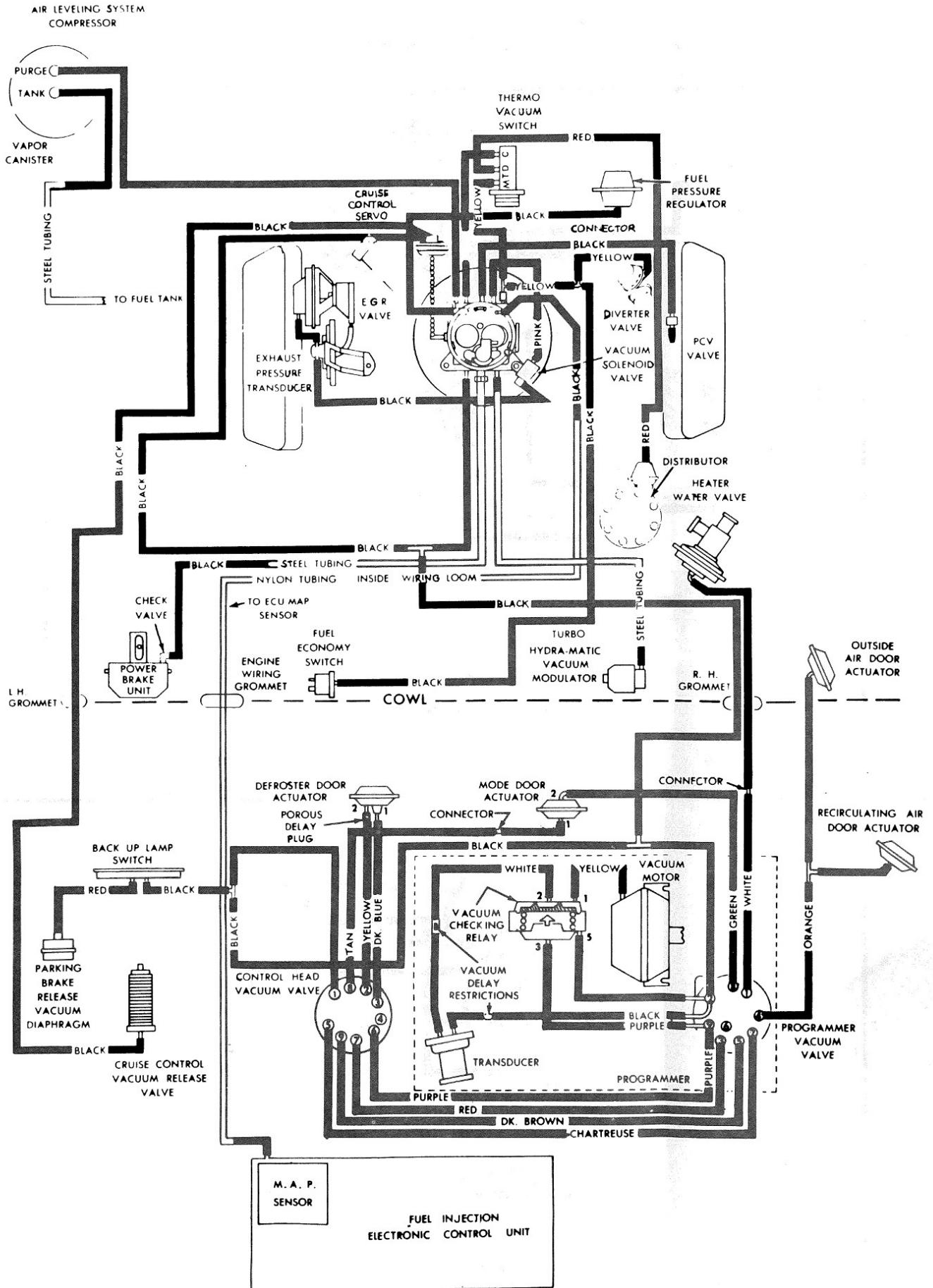


Figure 4-5 - Complete Vacuum Circuit. 1978 Seville Calif.

# 05 - Air Conditioner & Heater Wiring Circuit

[Back to the top](#)

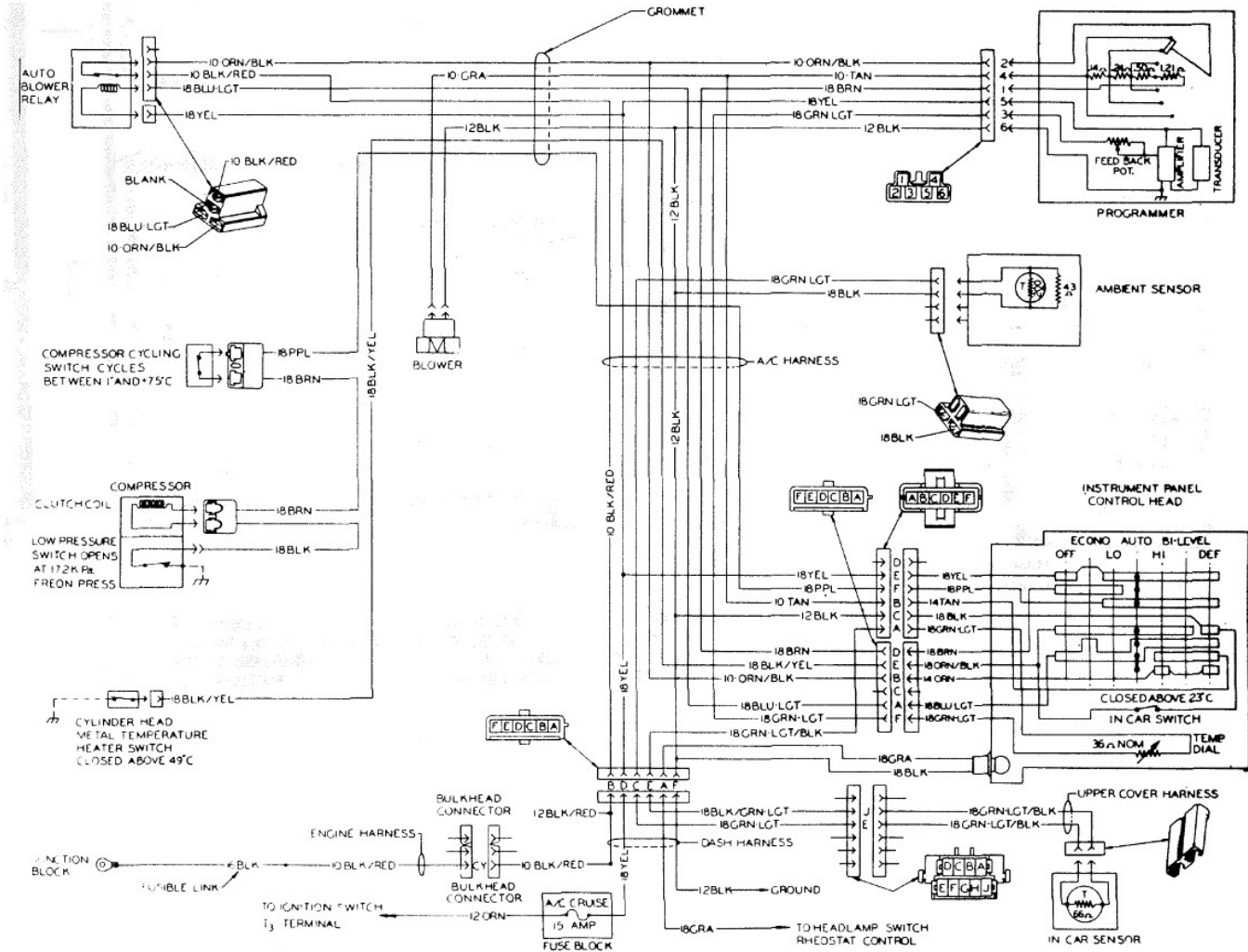


Figure 5-1 - Air Conditioner & Heater Wiring Circuit. 1977-78 Seville

# 06 - Cruise Control Wiring Circuit

[Back to the top](#)

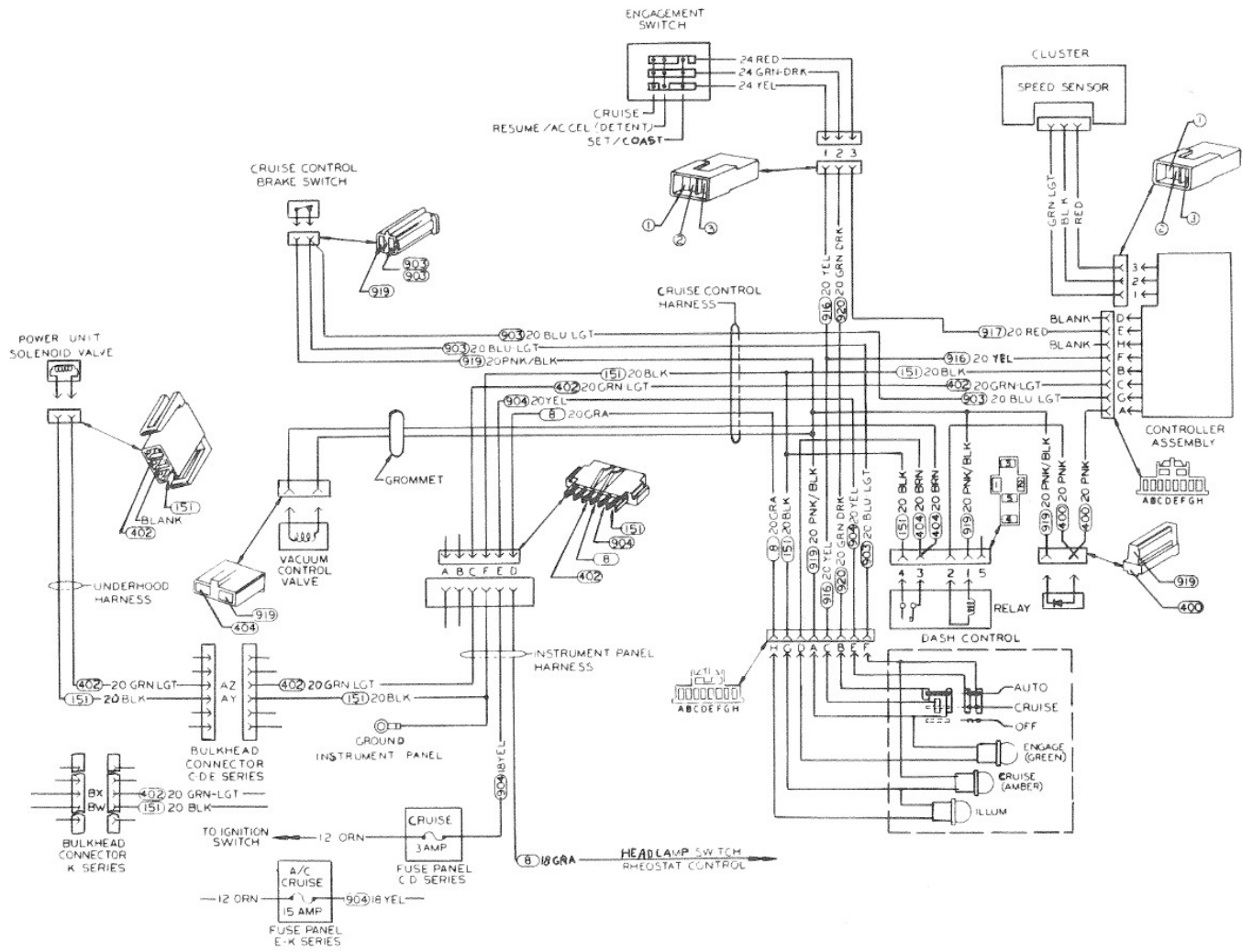


Figure 6-1 - Cruise Control Wiring Circuit. 1977 Seville

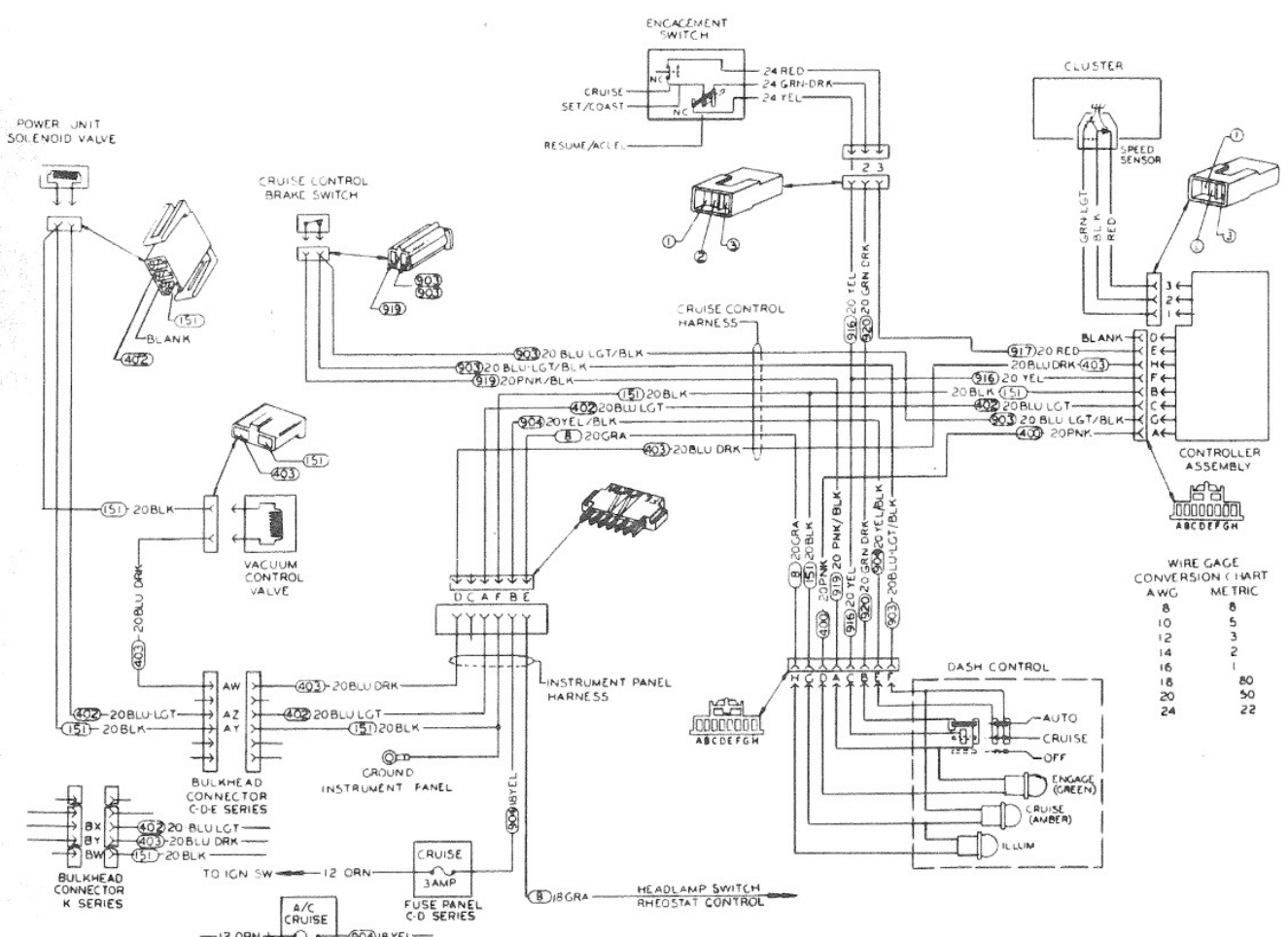


Figure 6-2 - Cruise Control Wiring Circuit. 1978 Seville

### 07 - Diesel Glow Plug Wiring Circuit

[Back to the top](#)

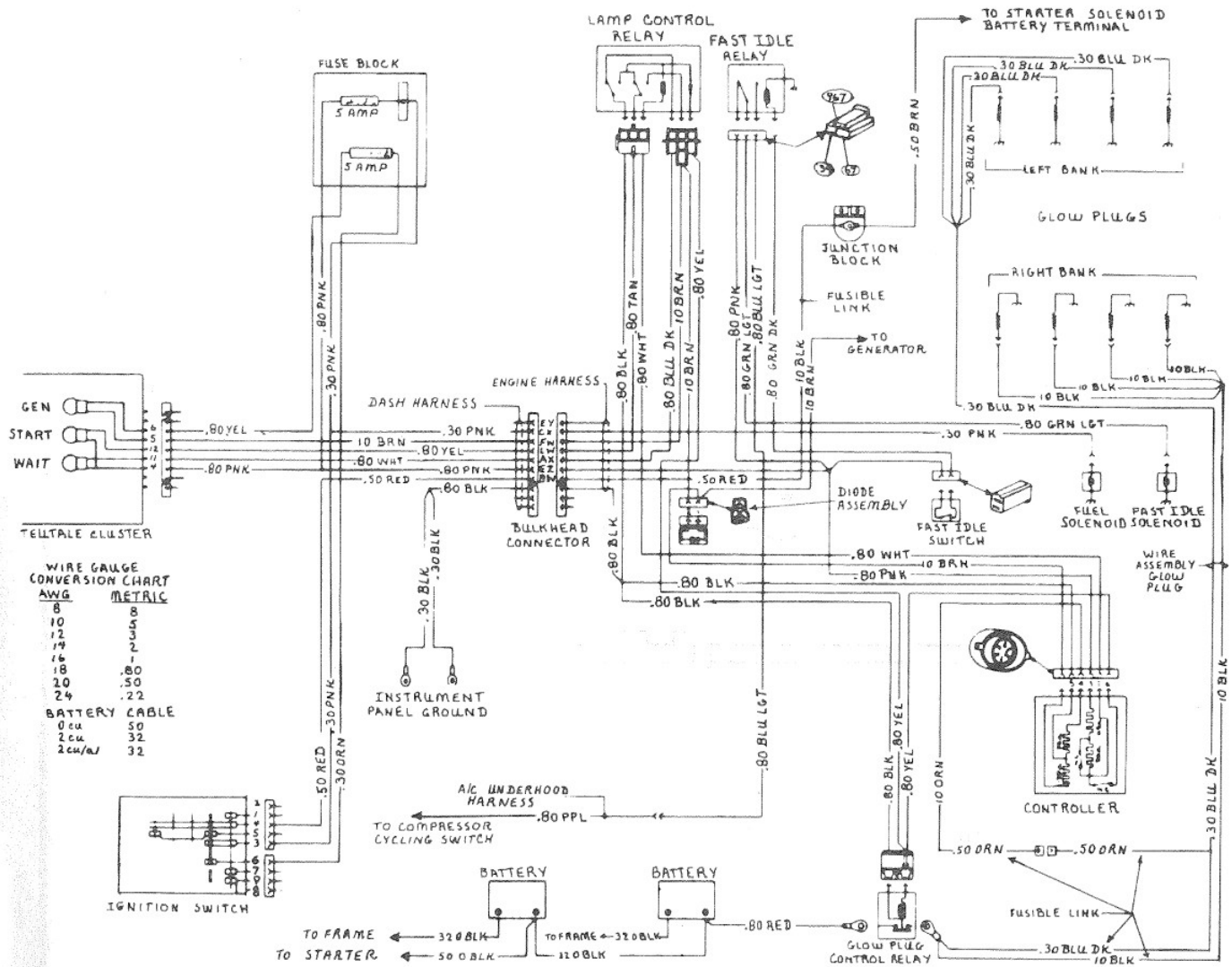


Figure 7-1 - Diesel Glow Plug Wiring Circuit, 1978

## 08 - Electronic Load Leveler Wiring Circuit

[Back to the top](#)

WIRE GAGE  
CONVERSION CHART

AWG	METRIC
10	5
12	3
14	2
16	1
18	.80
20	.50

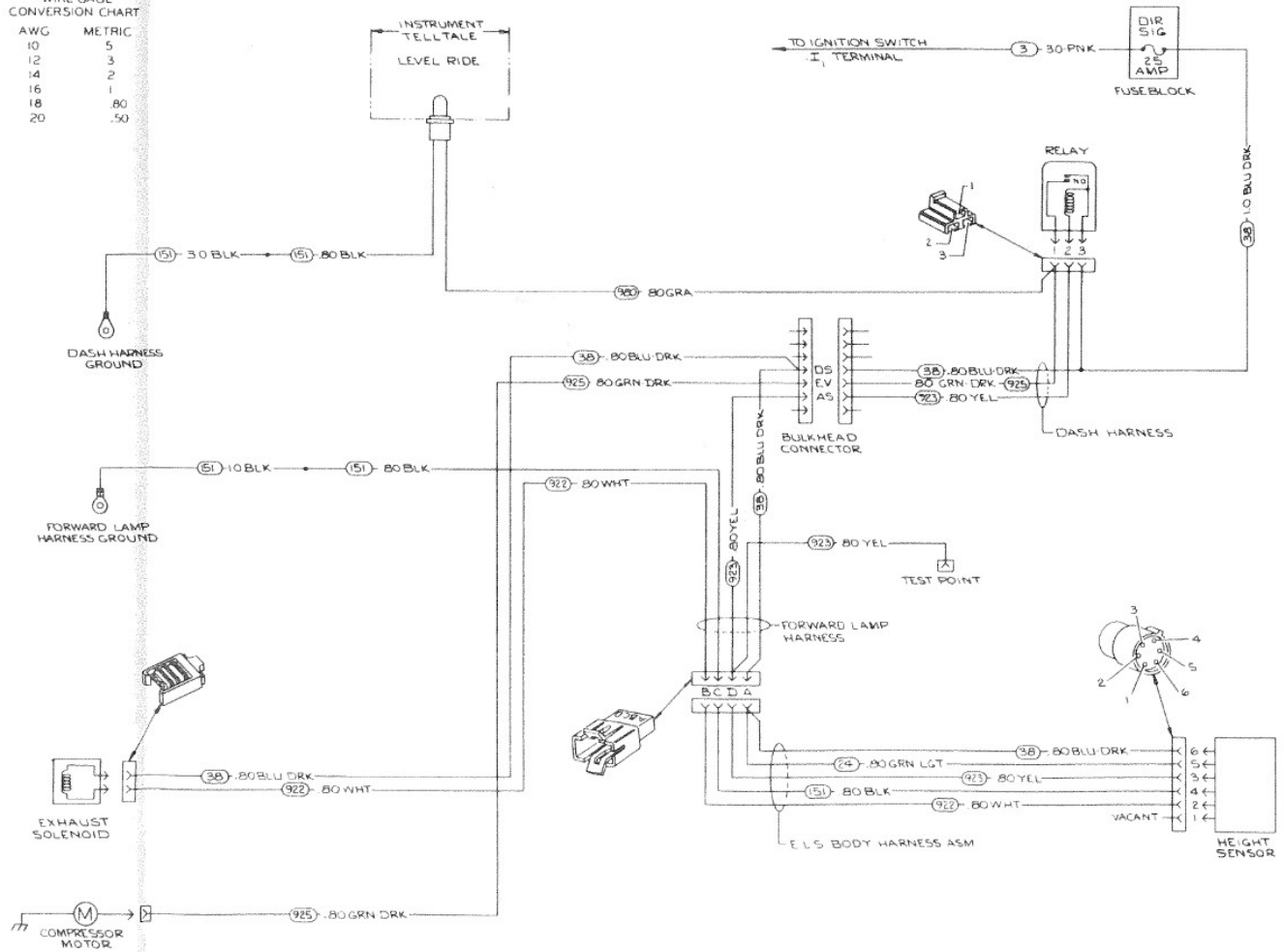


Figure 8-1 - Electronic Load Leveler Wiring Circuit. 1978

## 09 - Electronic Spark Selction System Wiring Circuit

[Back to the top](#)

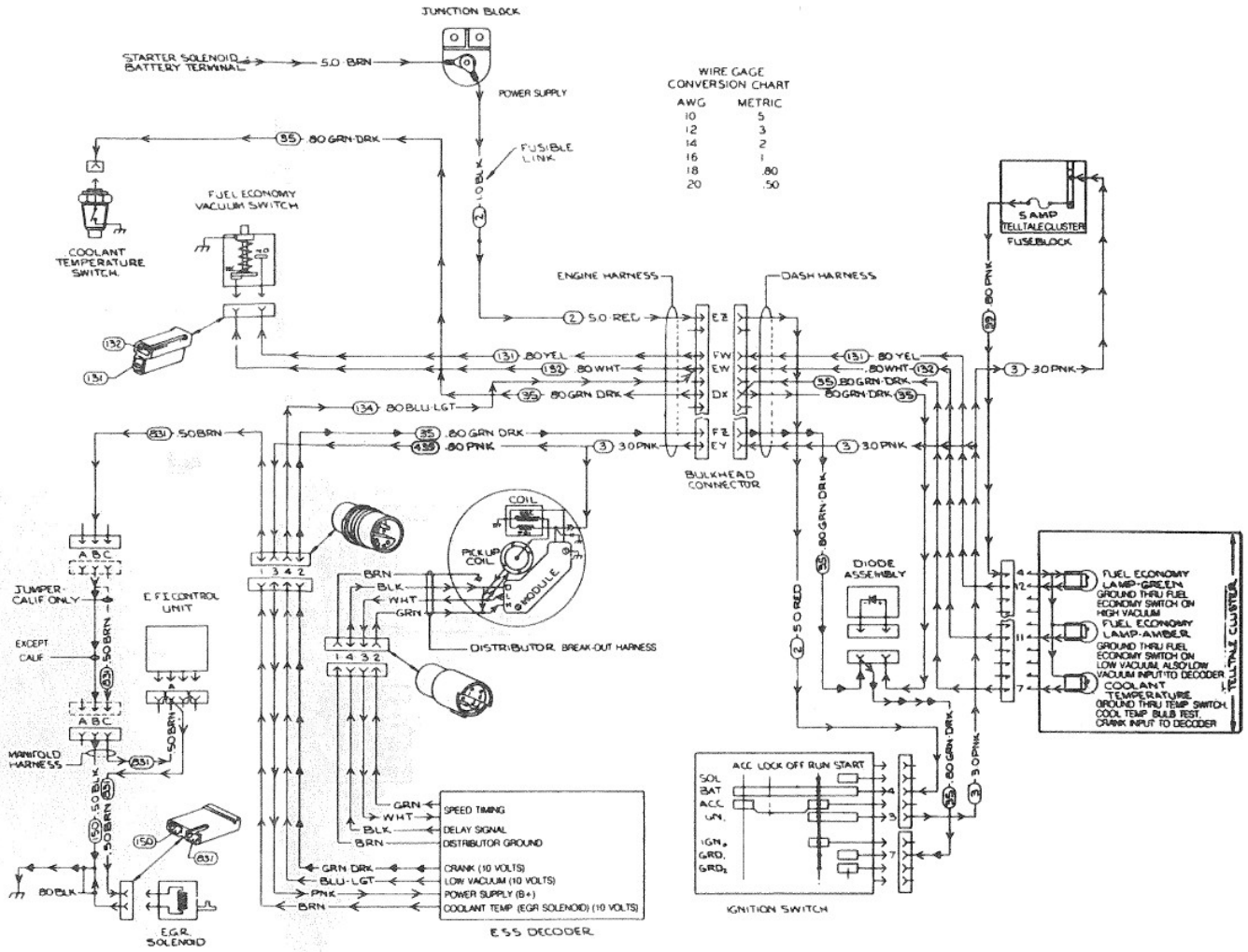


Figure 9-1 - Electronic Spark Selction System Wiring Circuit. 1978

## 10 - Fuel Economy Indicator System Wiring Circuit

[Back to the top](#)

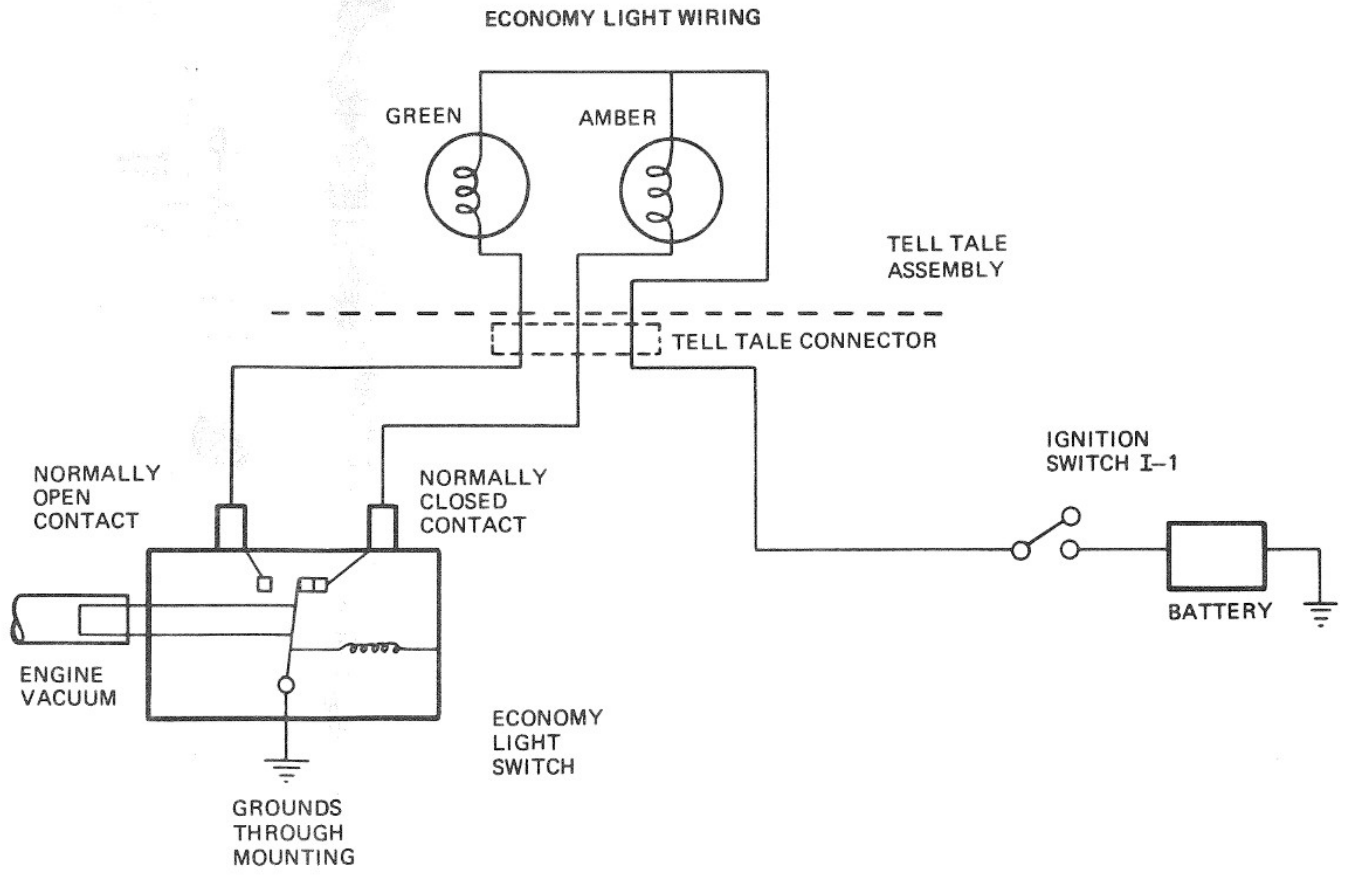


Figure 10-1 - Fuel Economy Indicator System Wiring Circuit. 1977-78

## 11 - Guide-Matic Wiring Circuit

[Back to the top](#)



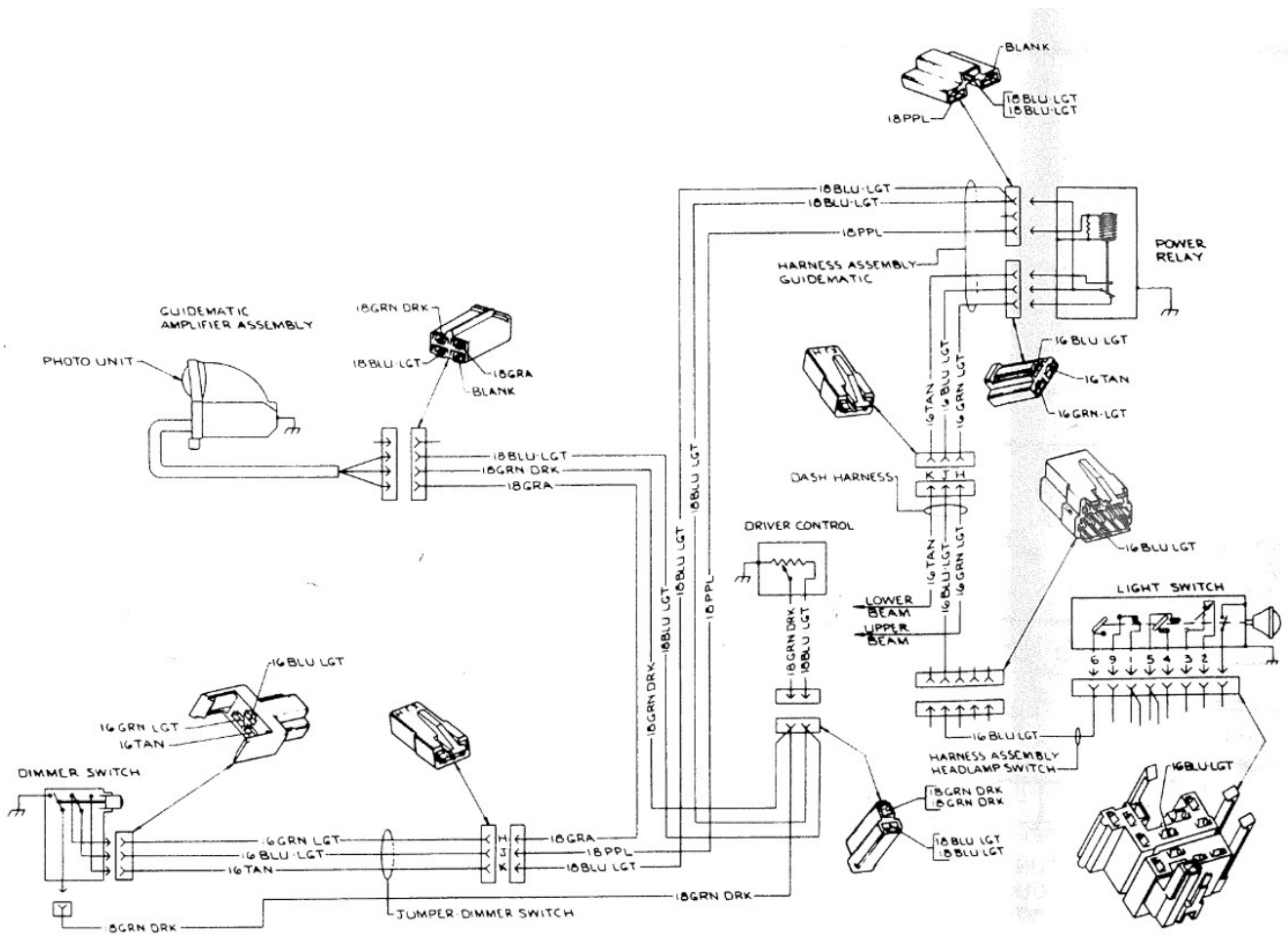


Figure 11-1 - Guide-Matic Wiring Circuit. 1977-78

## 12 - Illuminated Door Locks Wiring Circuit

[Back to the top](#)

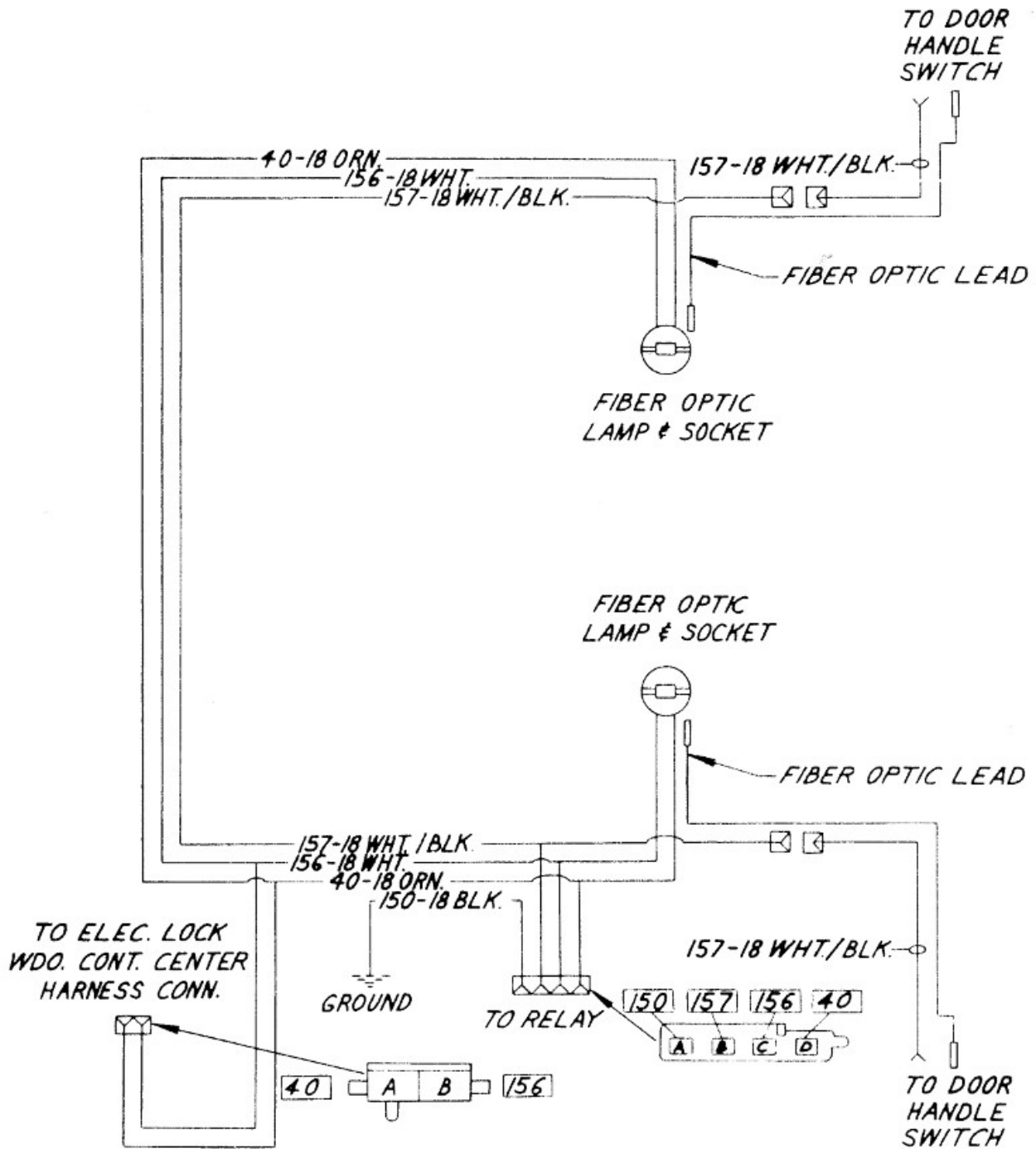


Figure 12-1 - Illuminated Door Locks Wiring Circuit. 1977-78

### 13 - Power Seat Back Recliner Wiring Circuit

[Back to the top](#)

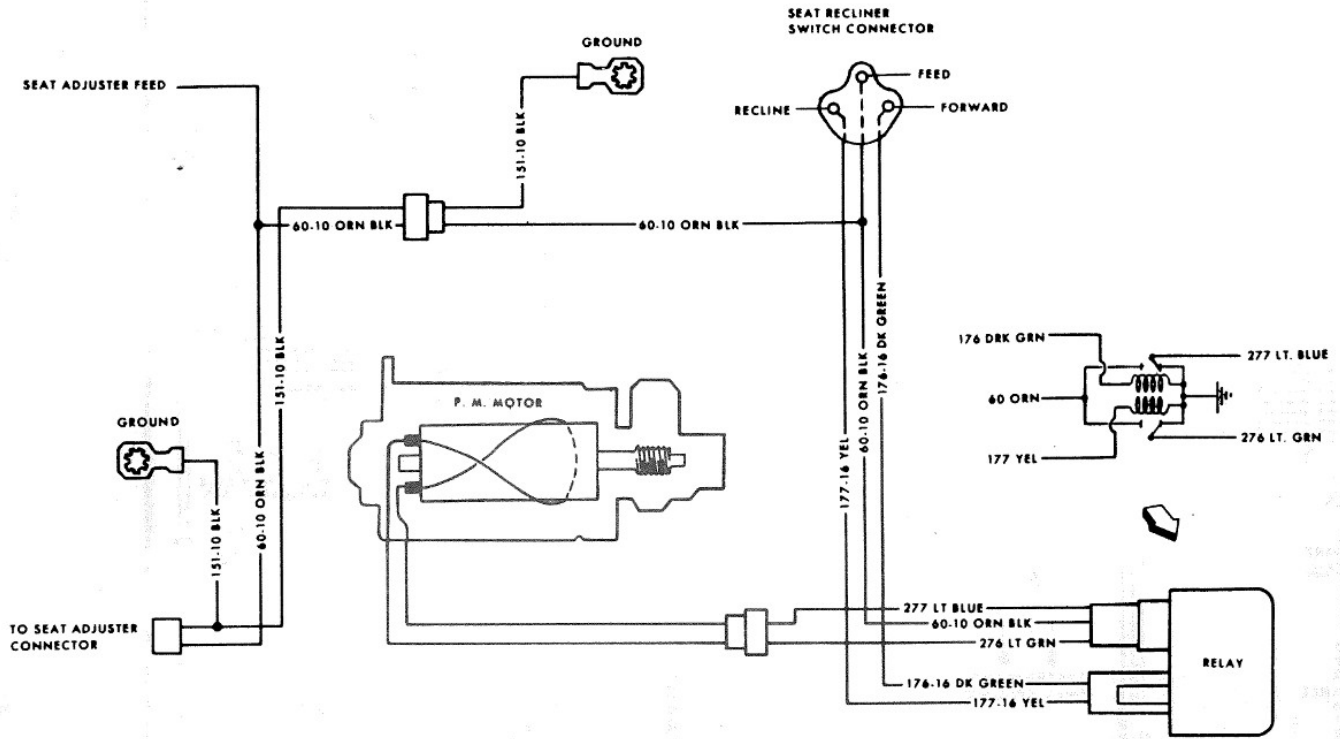


Figure 13-1 - Power Seat Back Recliner Wiring Circuit. 1977

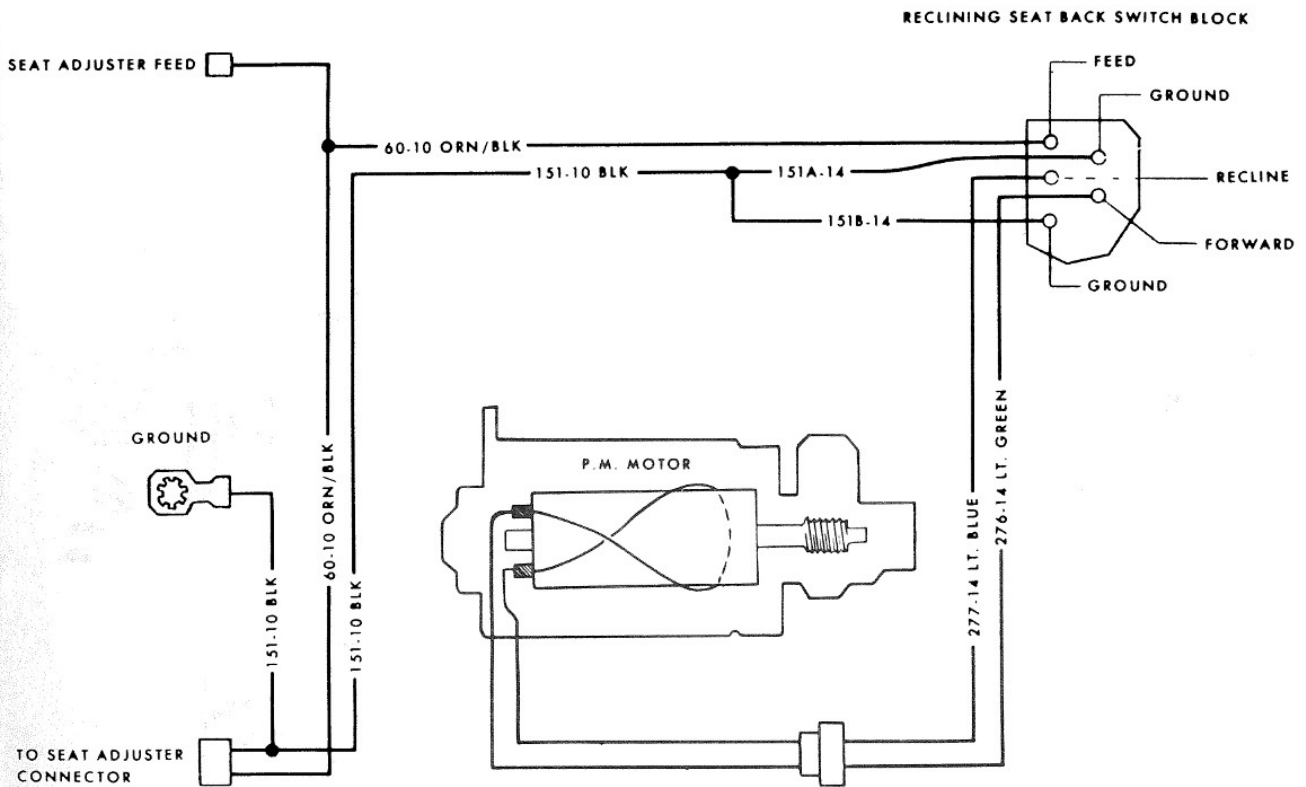


Figure 13-2 - Power Seat Back Recliner Wiring Circuit. 1978

## 14 - Power Door Locks Wiring Circuit (Except Automatic)

[Back to the top](#)

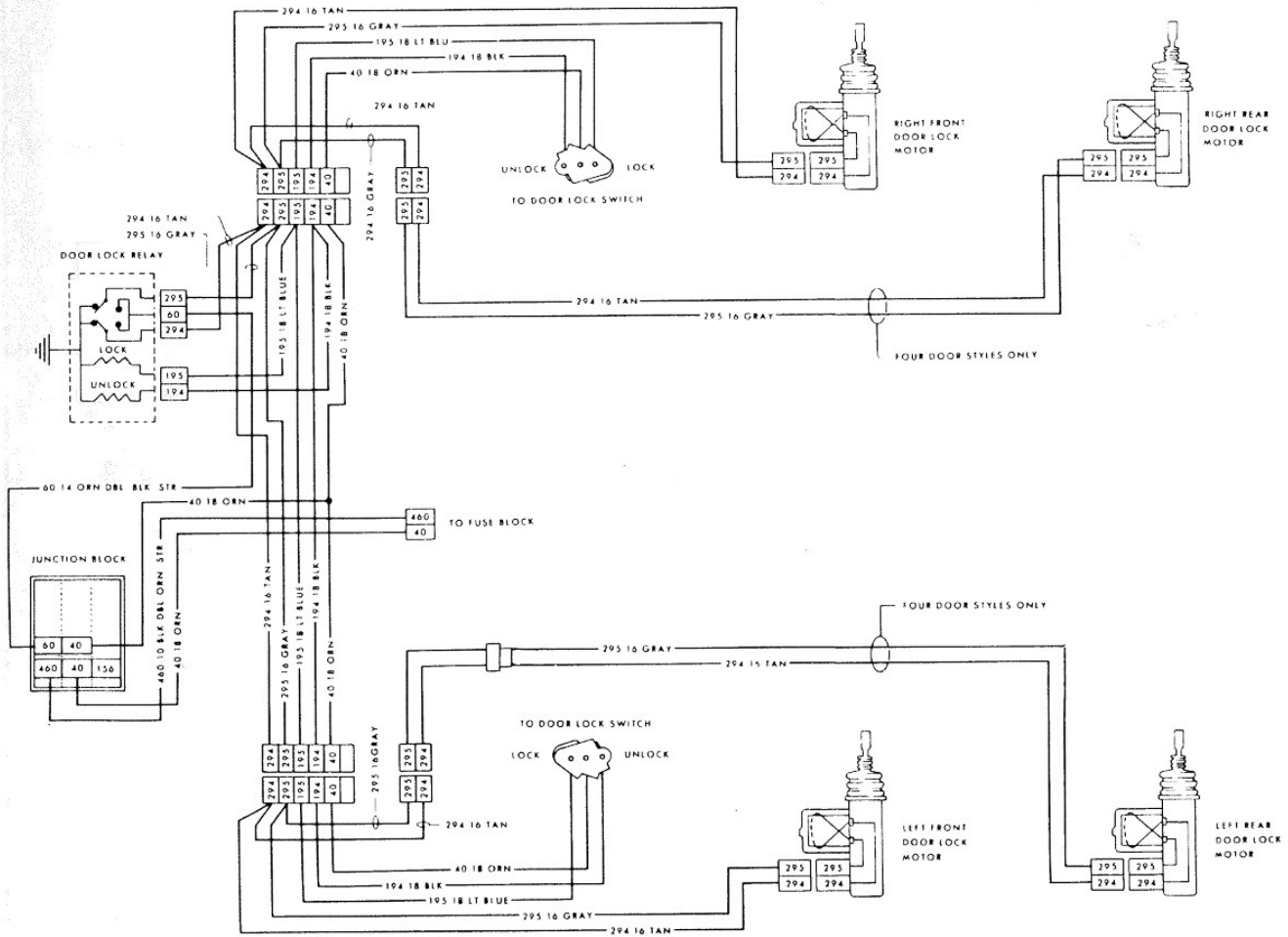


Figure 14-1 - Power Door Locks Wiring Circuit (Except Automatic). 1978

## 15 - Power Door Locks Wiring Circuit (Automatic)

[Back to the top](#)

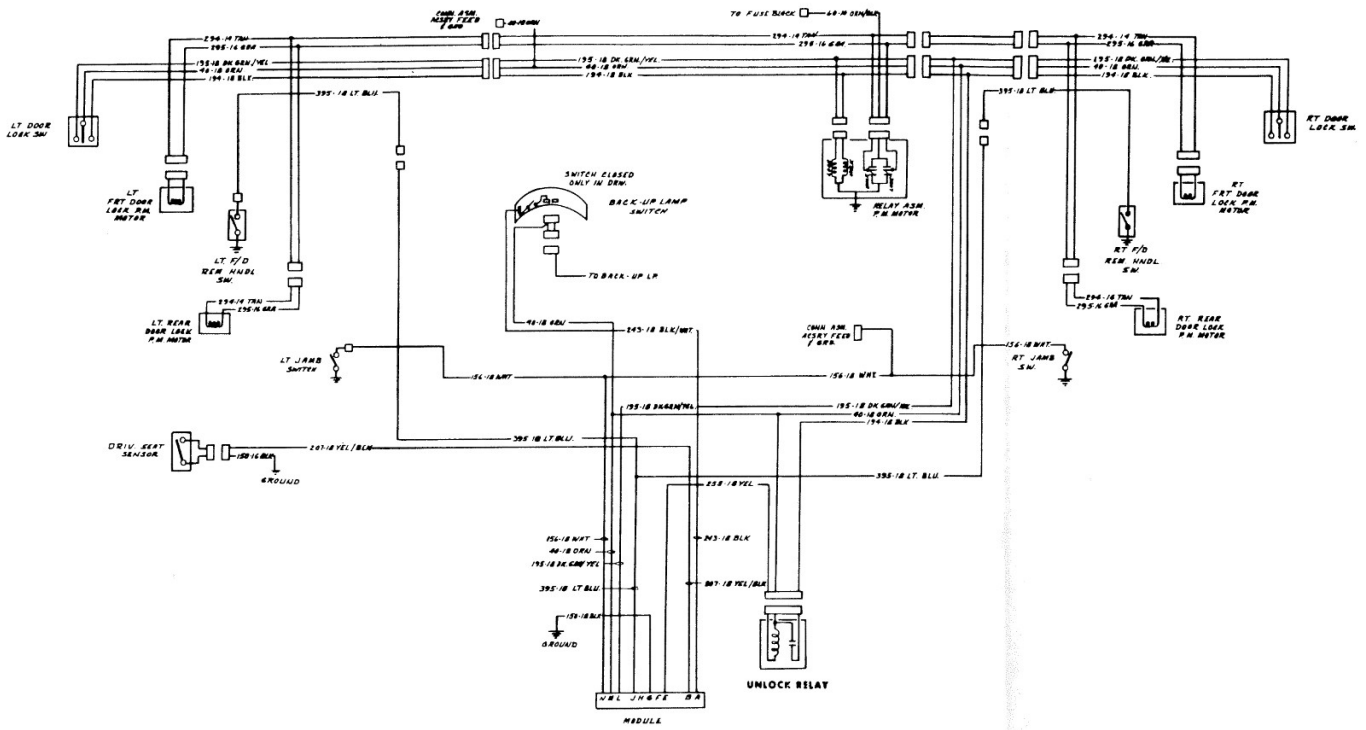


Figure 15-1 - Power Door Locks Wiring Circuit (Automatic). 1977

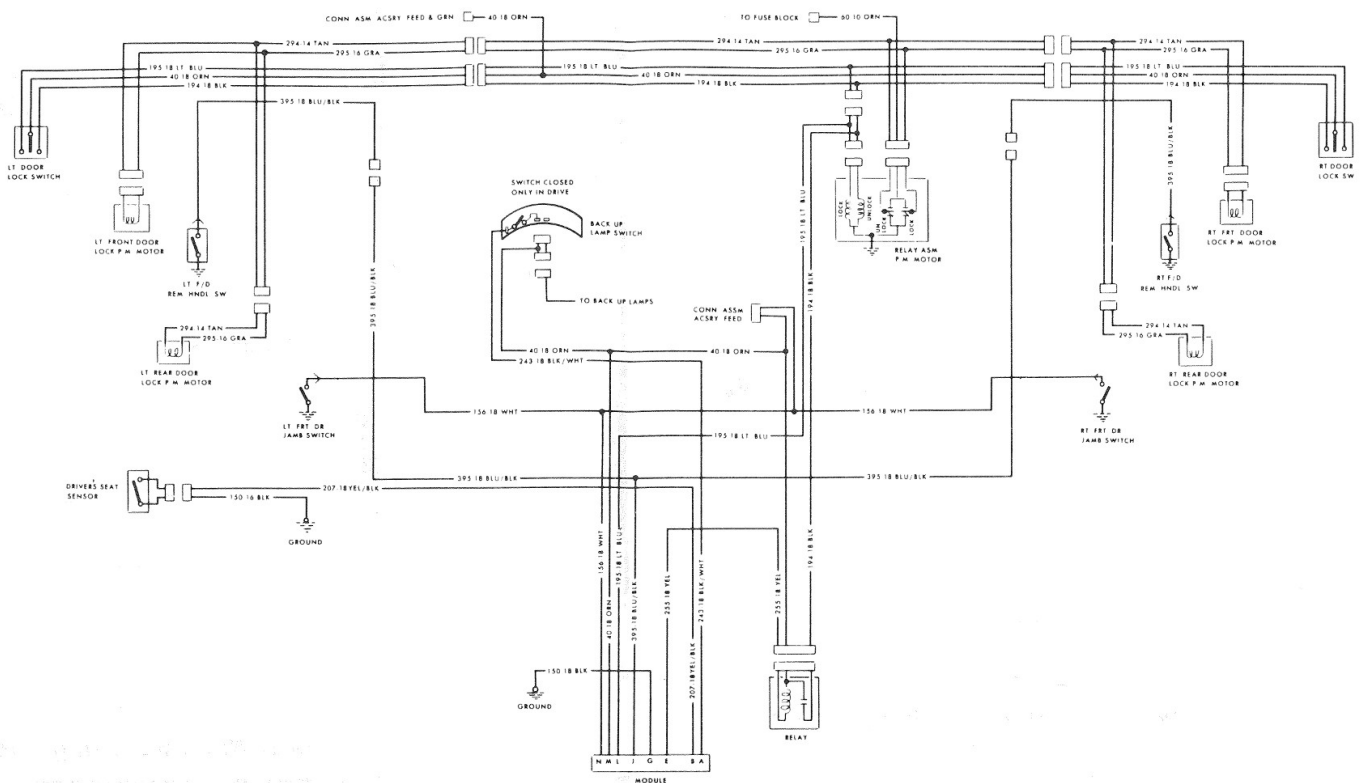


Figure 15-2 - Power Door Locks Wiring Circuit (Automatic). 1978

## 16 - Power Sun Roof Wiring Circuit

[Back to the top](#)

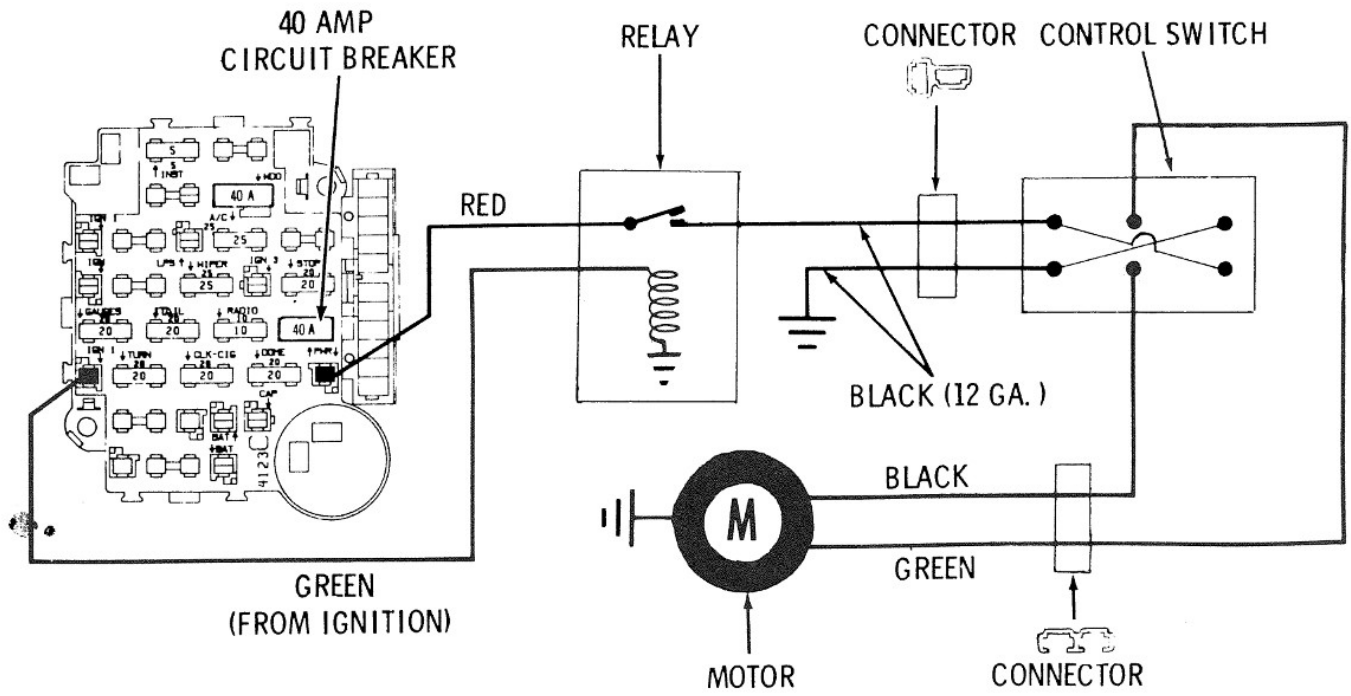


Figure 16-1 - Power Sun Roof Wiring Circuit. 1977

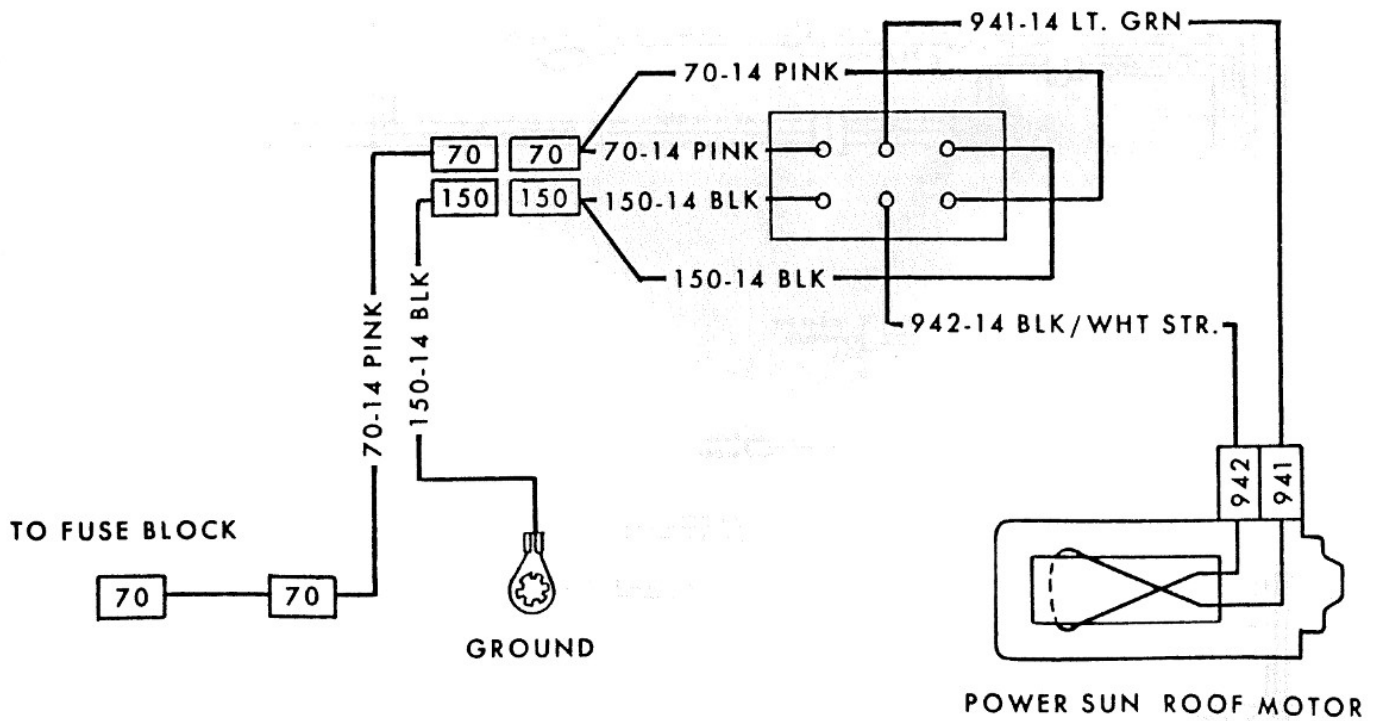


Figure 16-2 - Power Sun Roof Wiring Circuit. 1978

## 17 - Power Trunk Release Wiring Circuit

[Back to the top](#)

LID LOCK  
RELEASE SOLENOID

TO MOTOR DIVISION  
SWITCH

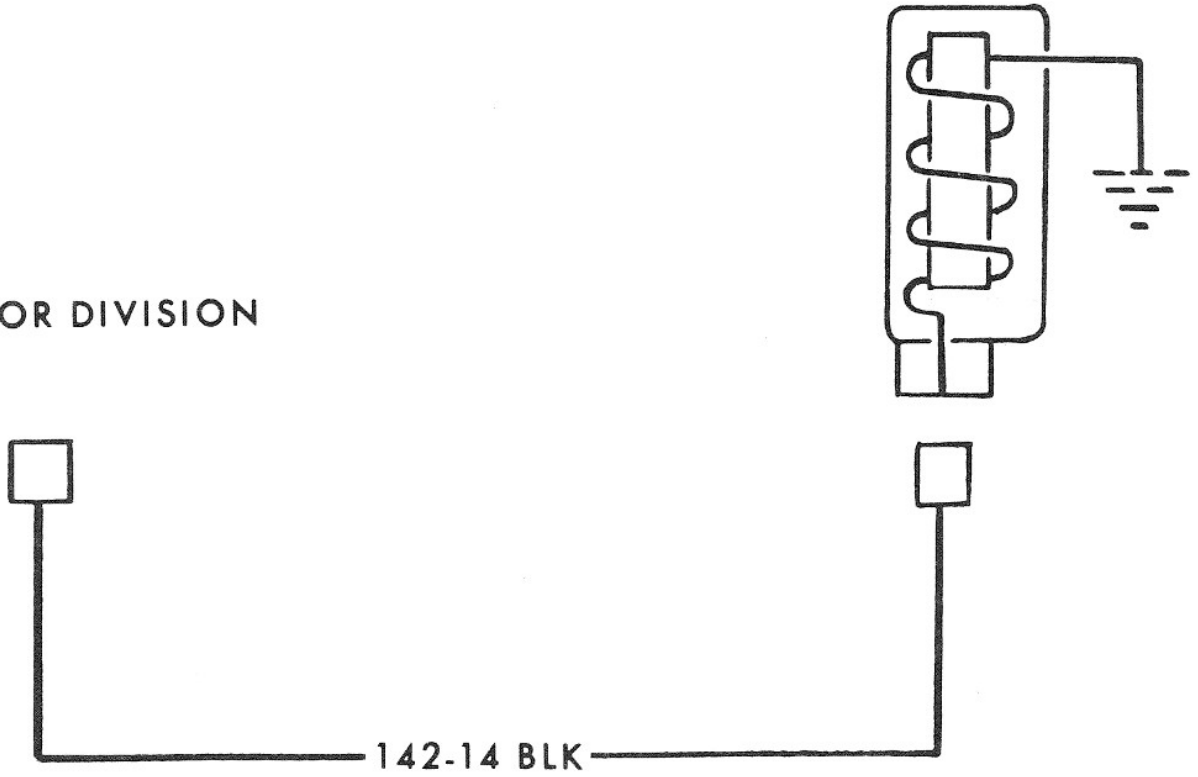


Figure 17-1 - Power Trunk Release Wiring Circuit. 1978

18 - Power Seats Wiring Circuit (Six Way)

[Back to the top](#)

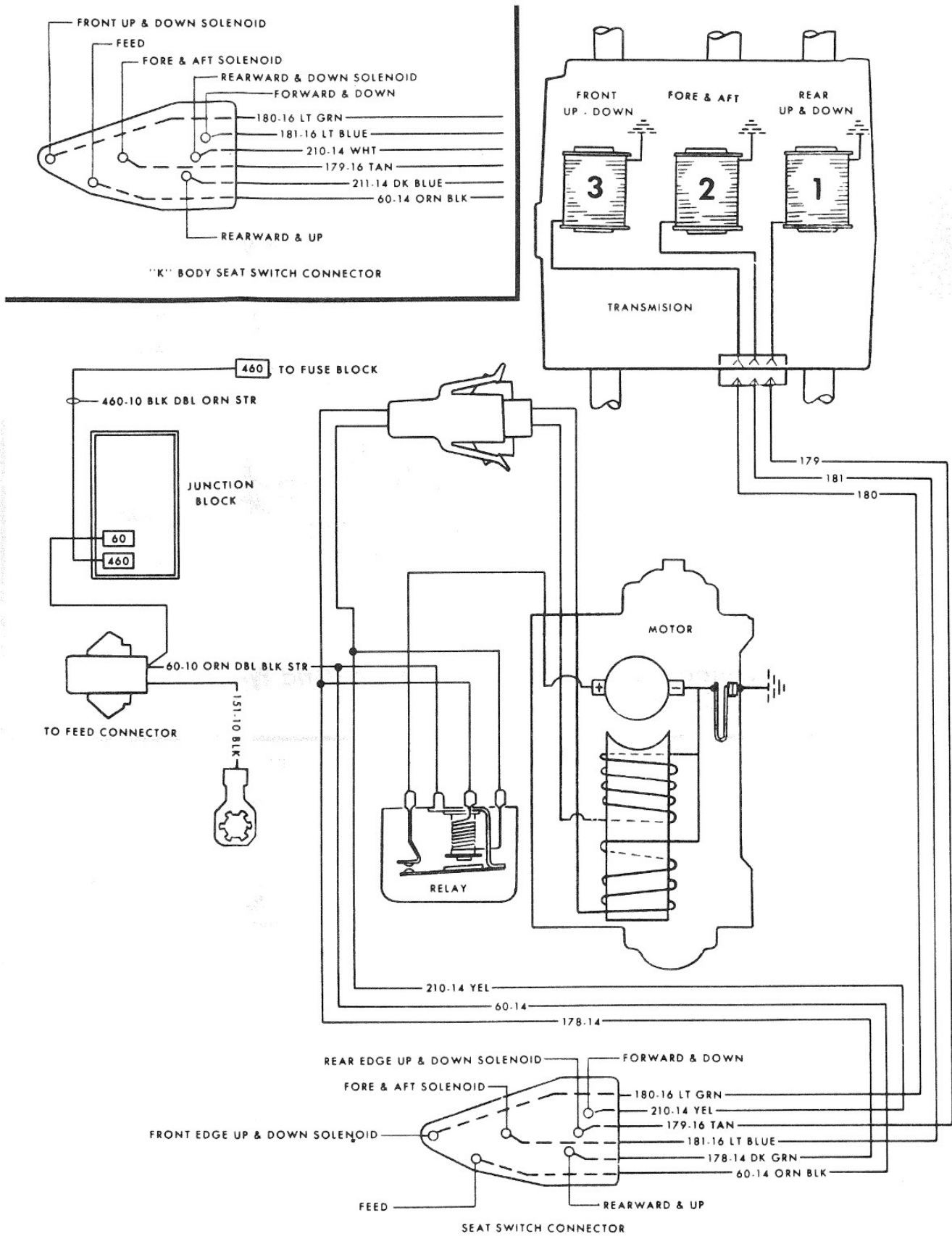


Figure 18-1 - Power Seats Wiring Circuit (Six Way). 1977-78



# 19 - Rear Window Defogger Wiring Circuit

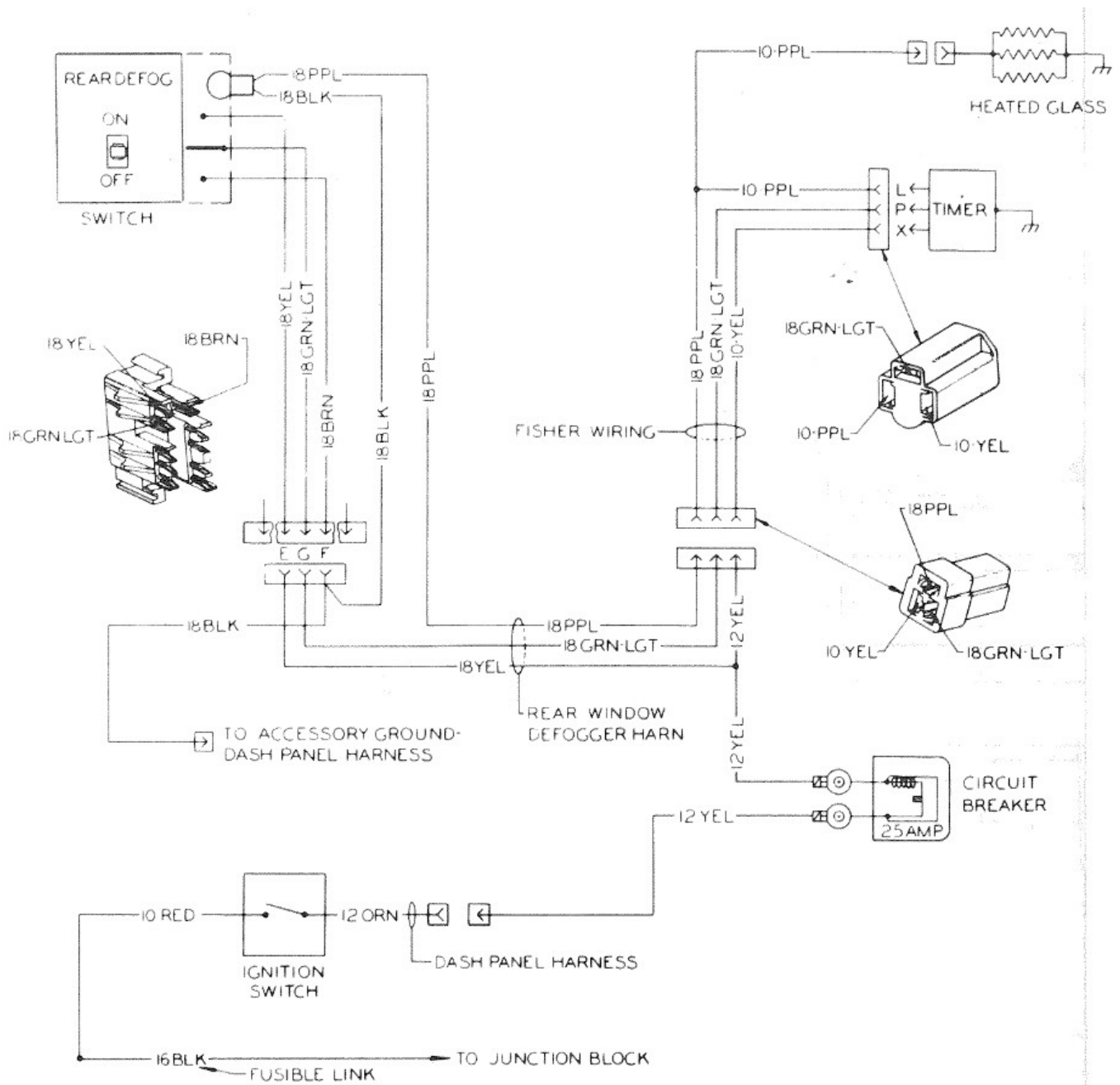


Figure 19-1 - Rear Window Defogger Wiring Circuit. 1977-78

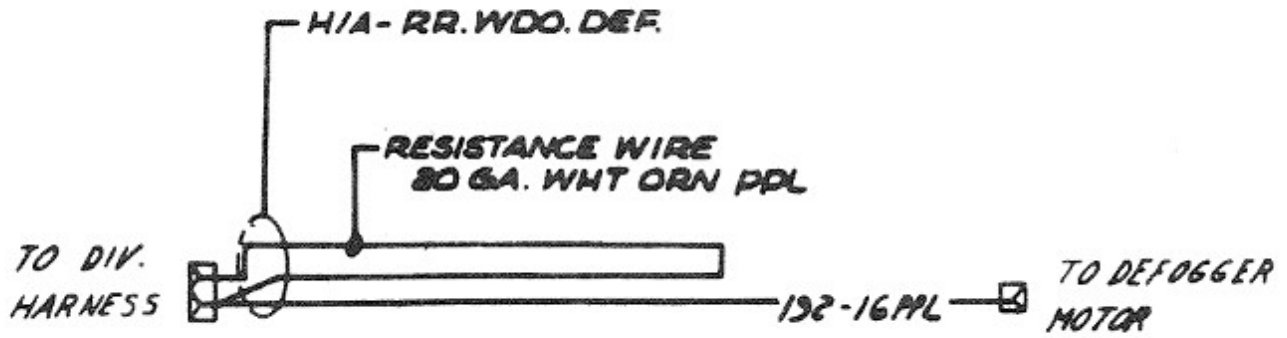


Figure 19-2 - Rear Window Defogger Wiring Circuit (Blower Type), 1977-78

## 20 - Power Windows Wiring Circuit

[Back to the top](#)

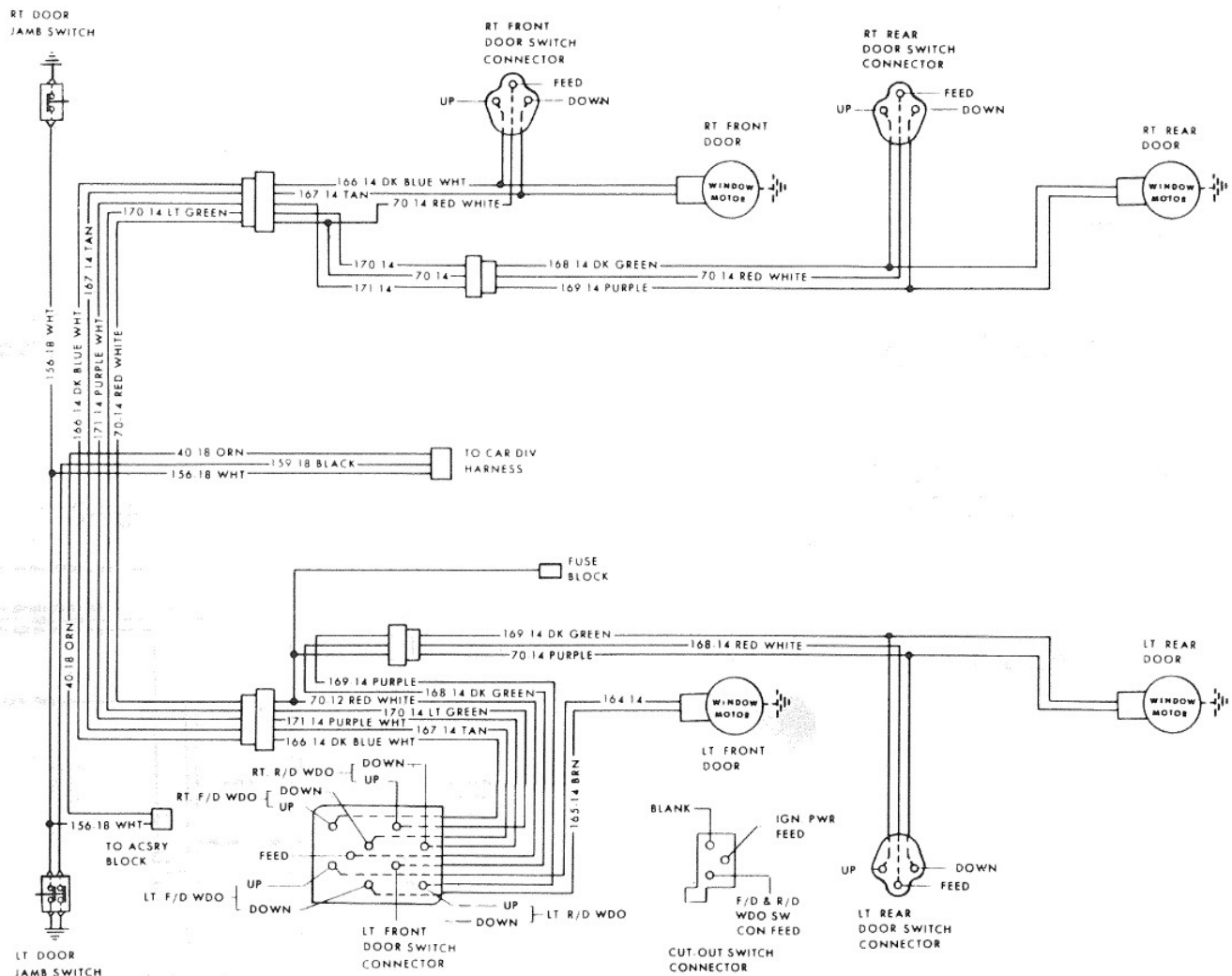


Figure 20-1 - Power Windows Wiring Circuit, 1977

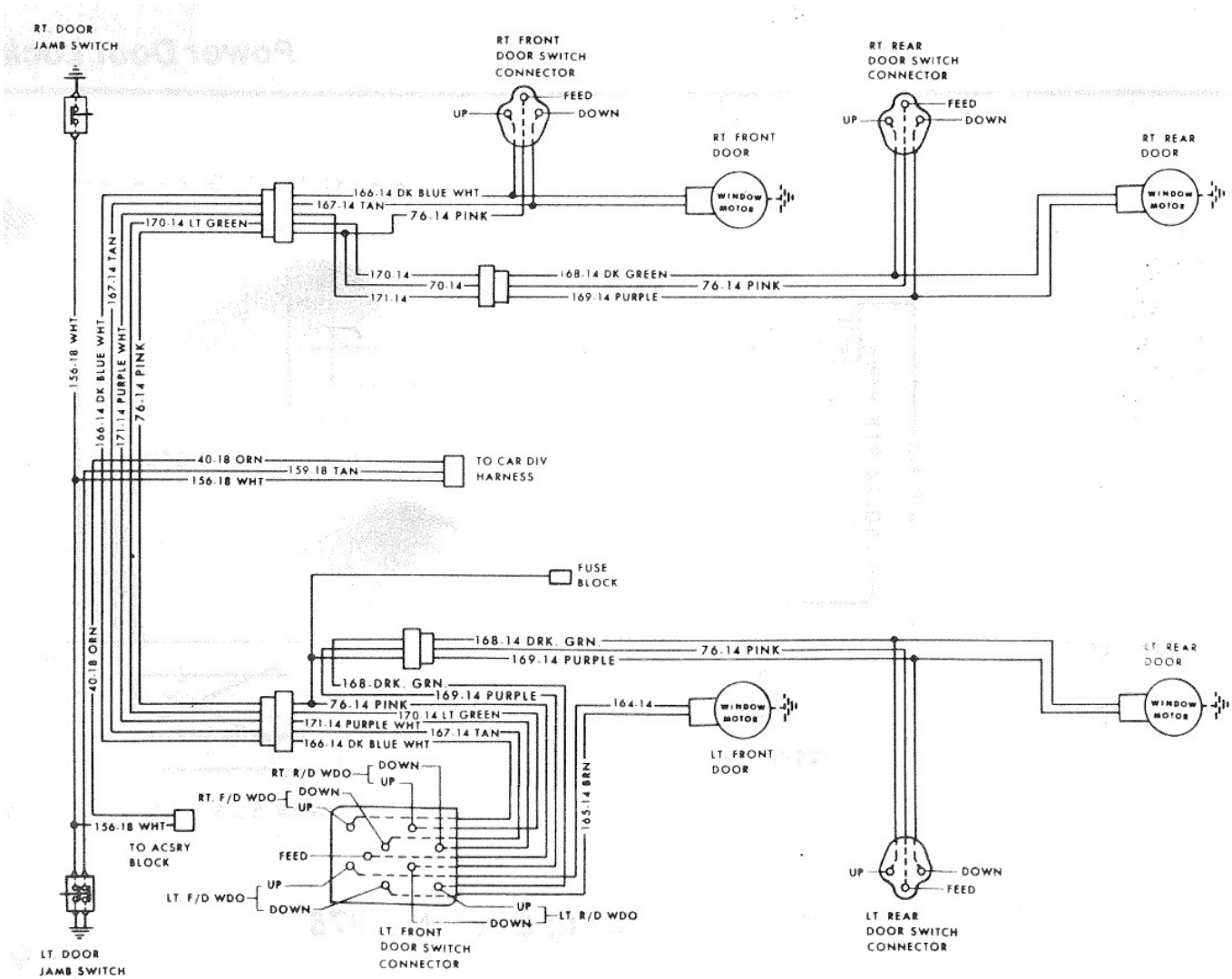


Figure 20-2 - Power Windows Wiring Circuit. 1978

## 21 - Power Trunk Closing Unit

[Back to the top](#)

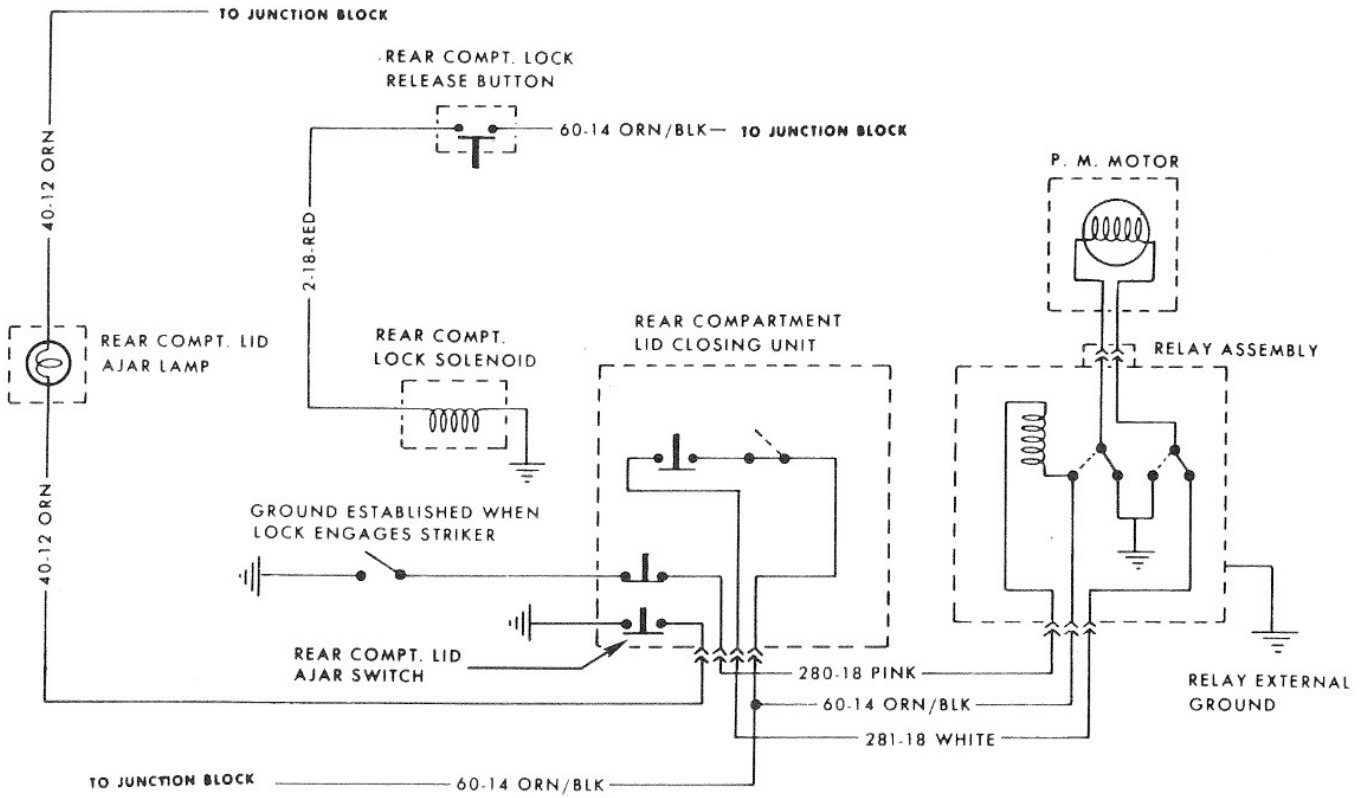


Figure 21-1 - Power Trunk Closing Unit. 1977-78

## 22 - Seat Belt Warning Wiring Circuit

[Back to the top](#)

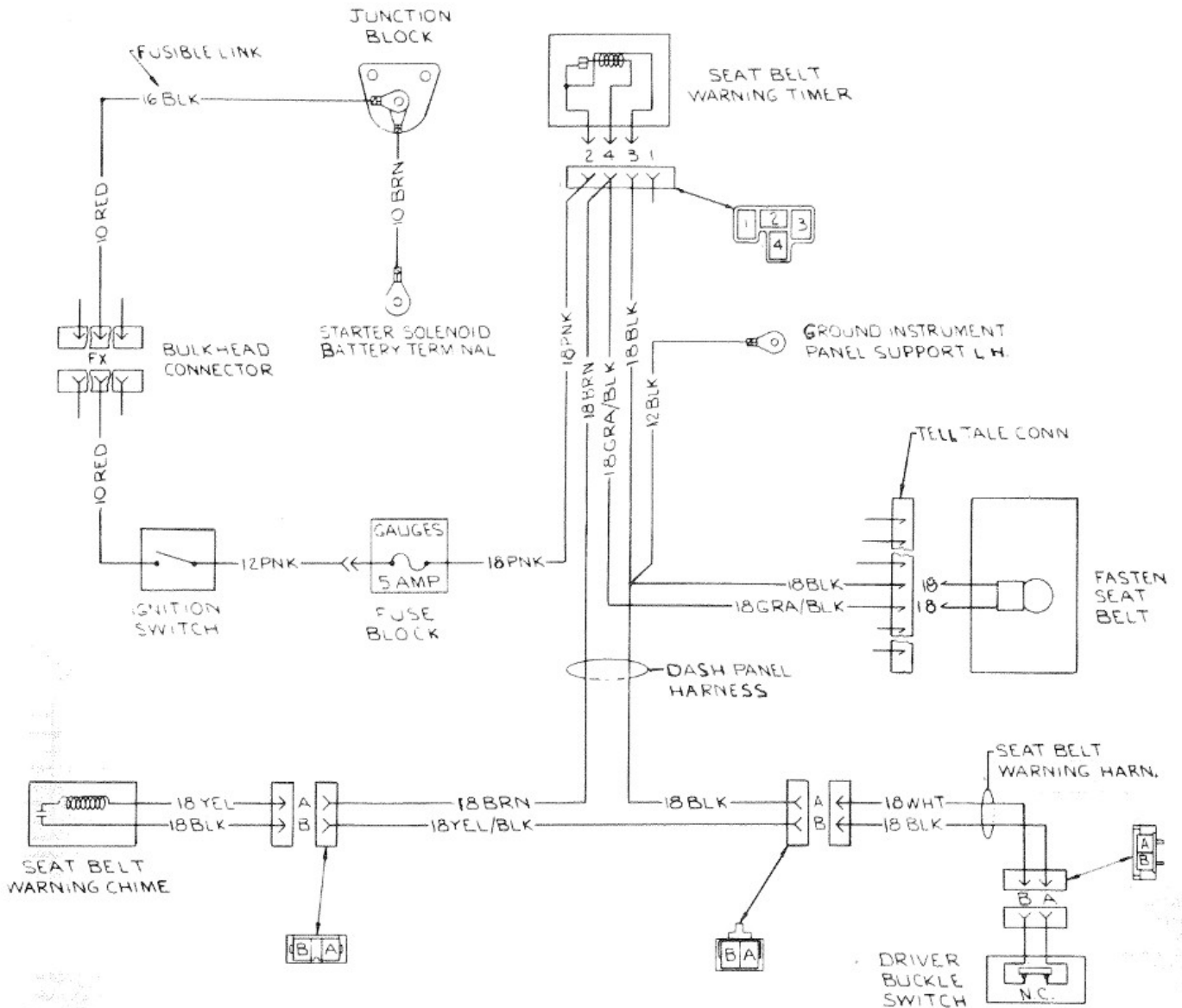


Figure 22-1 - Seat Belt Warning Wiring Circuit. 1977-78

## 23 - Theft Deterrent Wiring Circuit

[Back to the top](#)

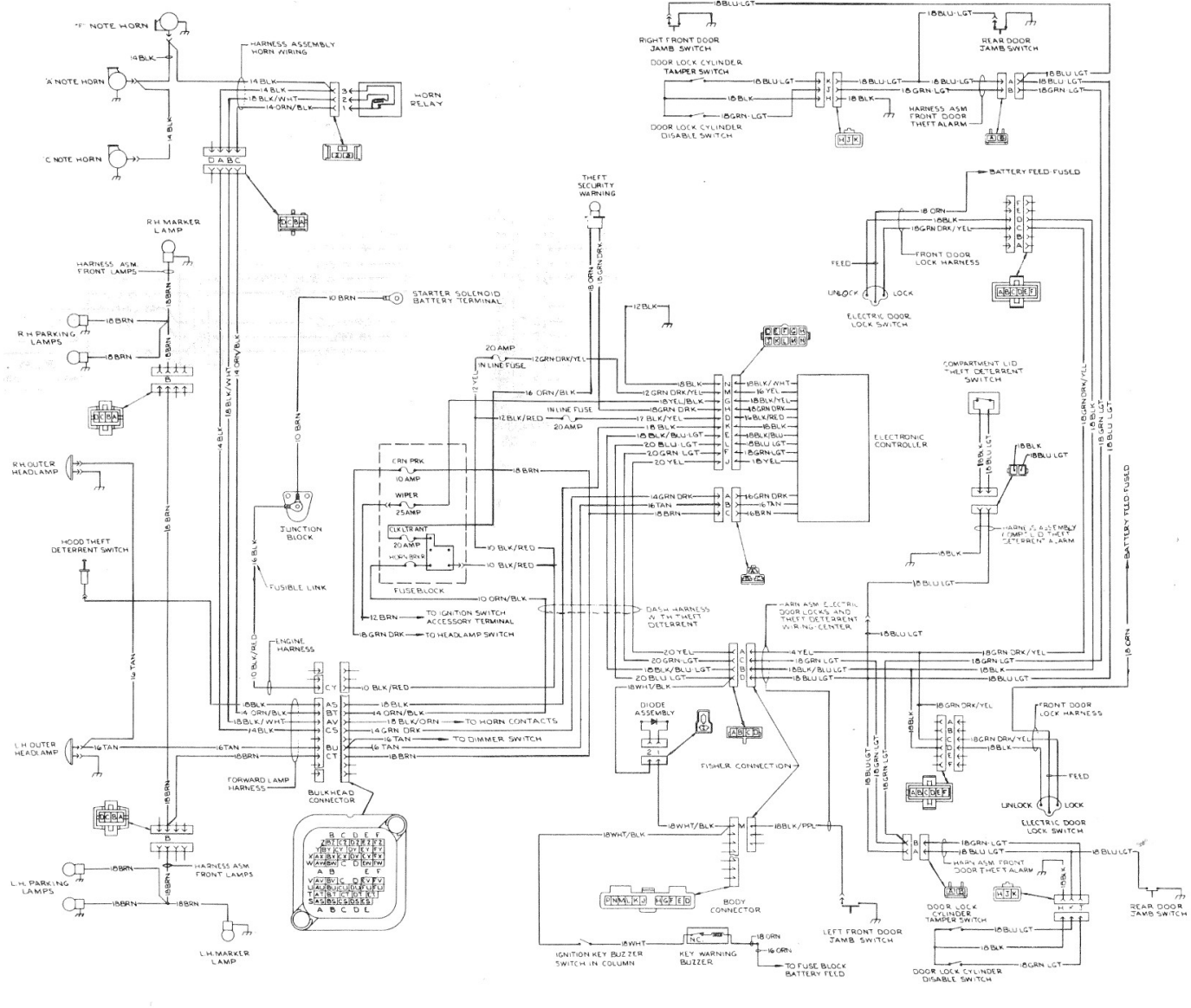


Figure 23-1 - Theft Deterrent Wiring Circuit. 1977-78

## 24 - Windshield Wiper Wiring Circuit (Controlled Cycle)

[Back to the top](#)

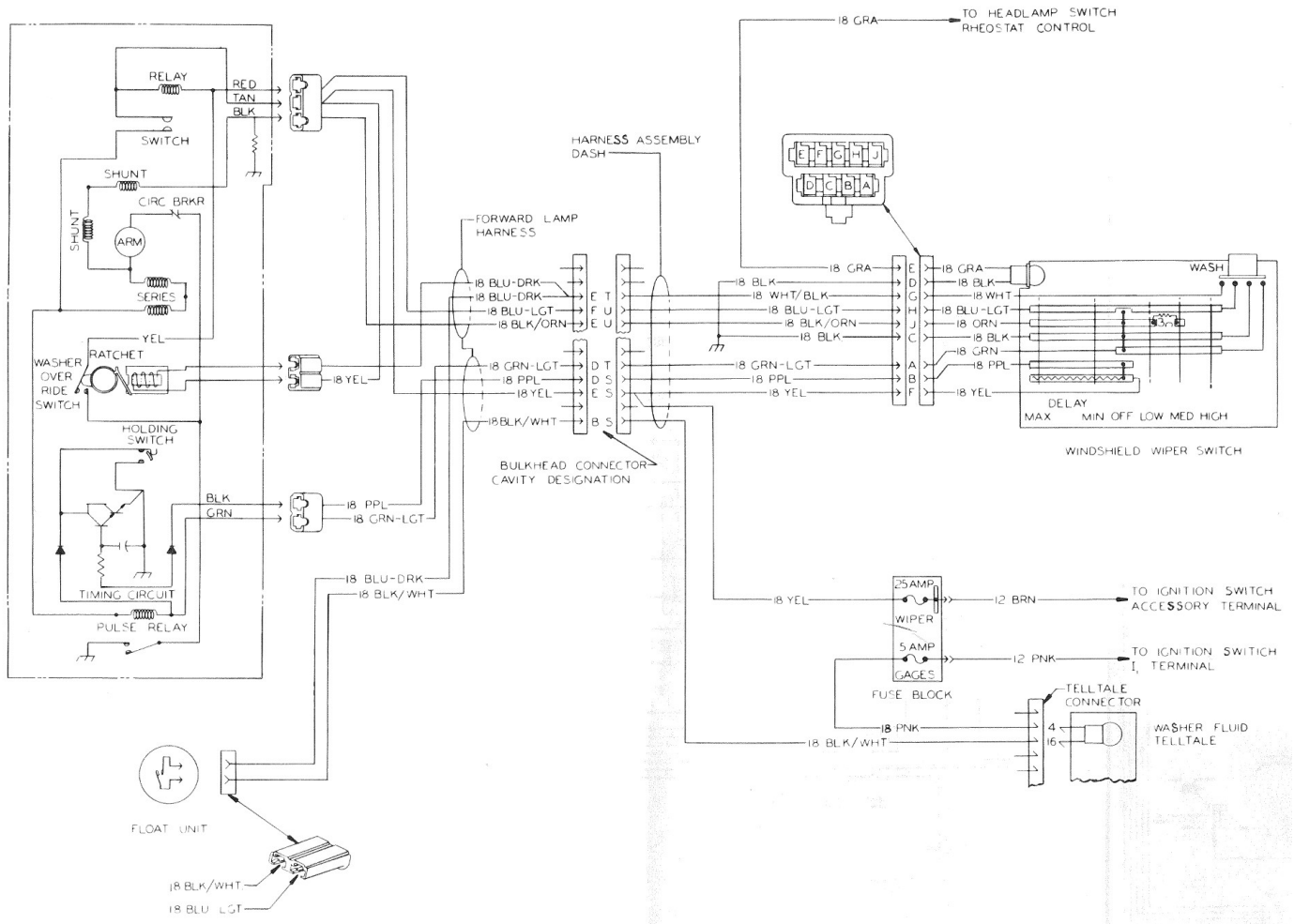


Figure 24-1 - Windshield Wiper Wiring Circuit (Controlled Cycle). 1977-78

## 25 - Twilight Sentinel Wiring Circuit

[Back to the top](#)

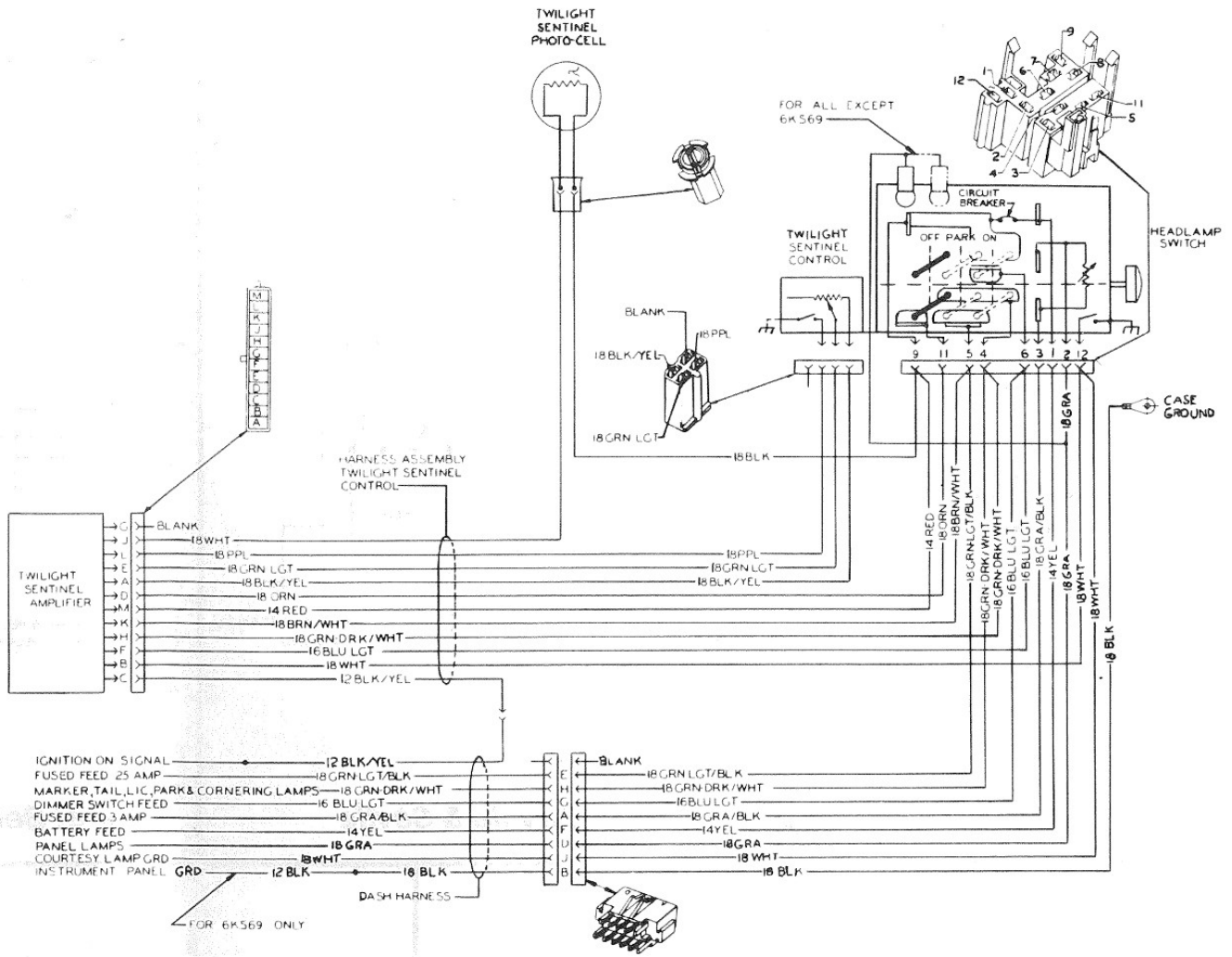


Figure 25-1 - Twilight Sentinel Wiring Circuit. 1977-78

## 26 - Electronic Fuel Injection Wiring Circuit

[Back to the top](#)



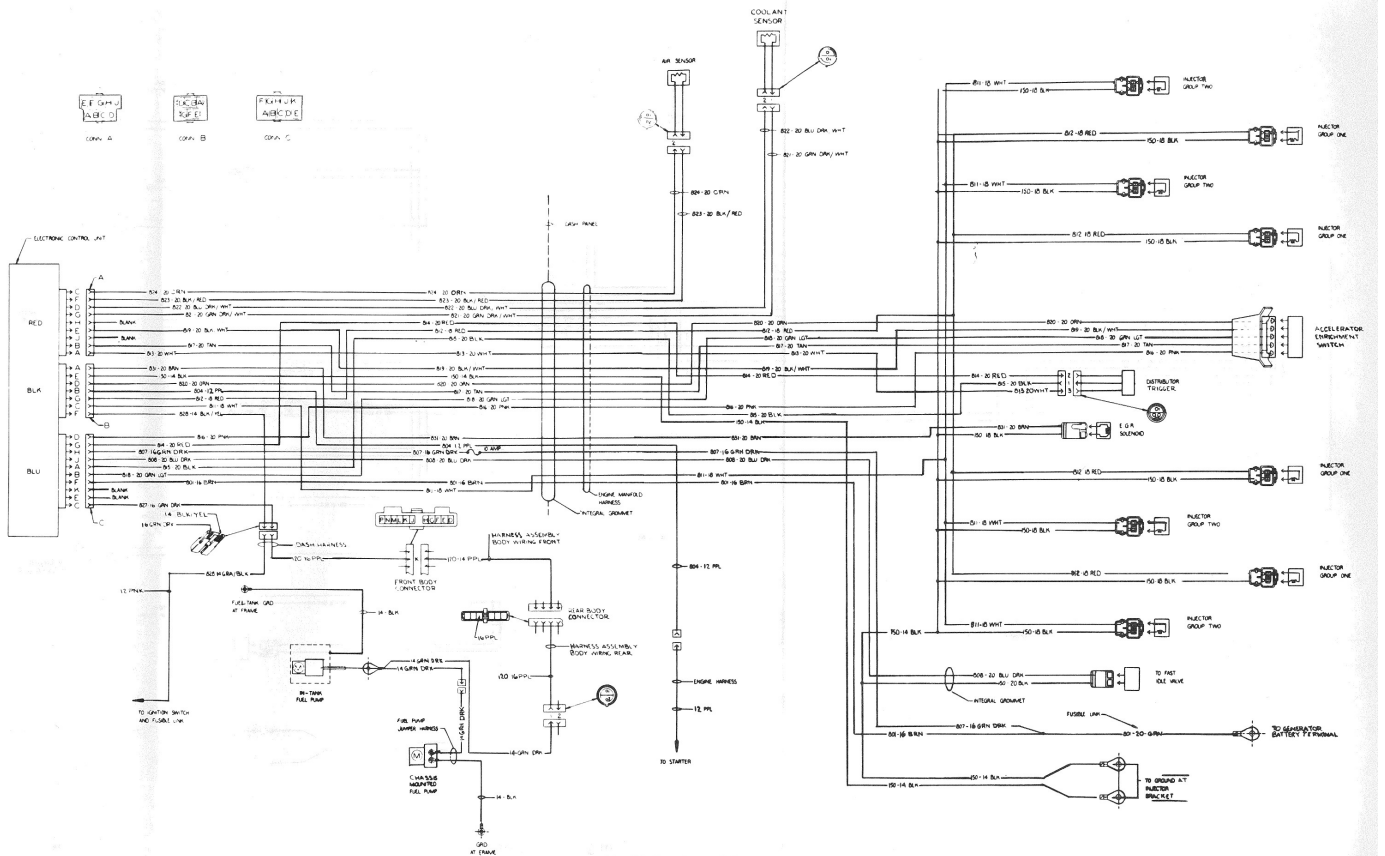


Figure 26-1 - Electronic Fuel Injection Wiring Circuit. 1977

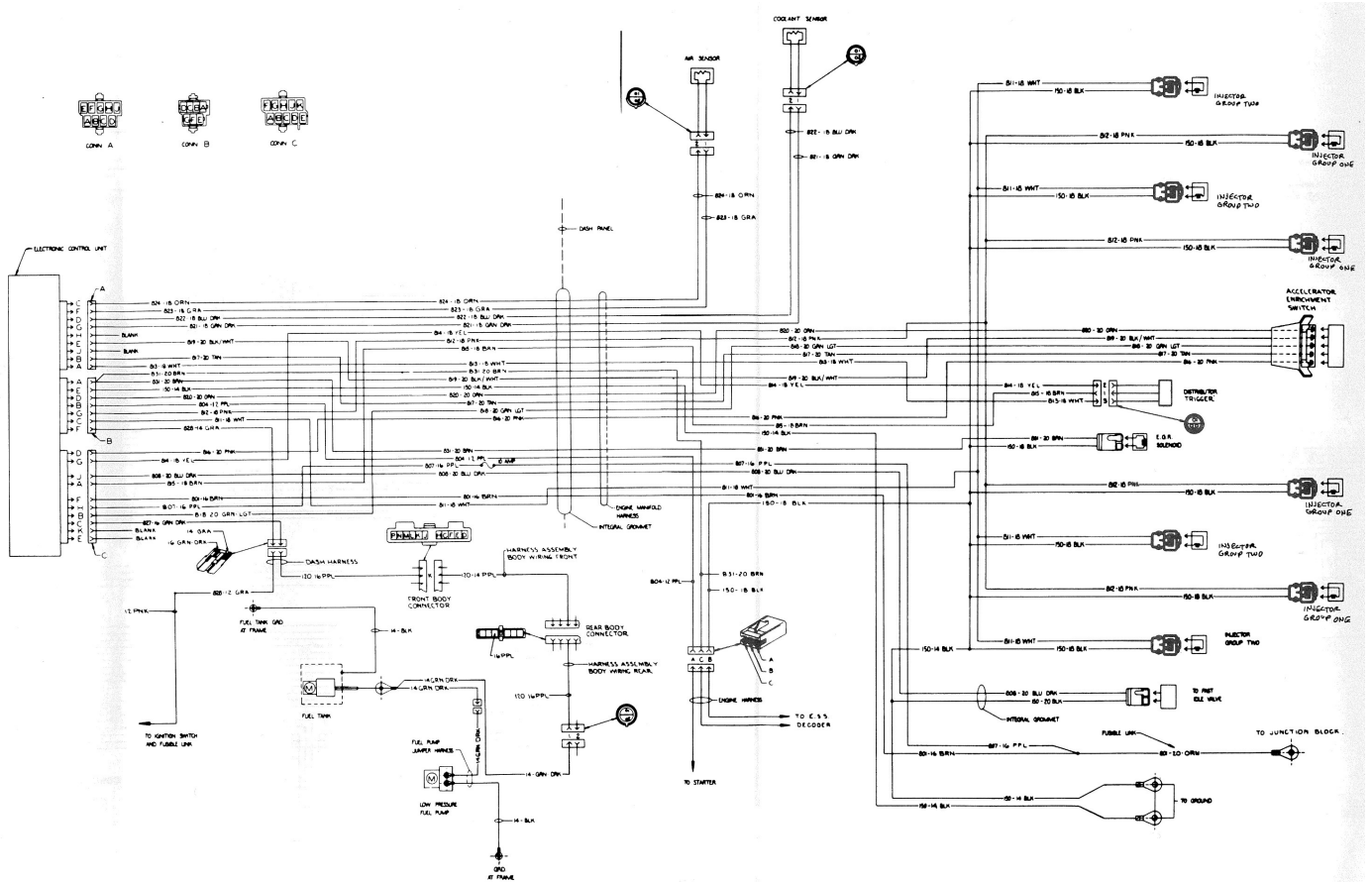


Figure 26-2 - Electronic Fuel Injection Wiring Circuit. 1978

## 27 - Trip Computer Wiring Circuit

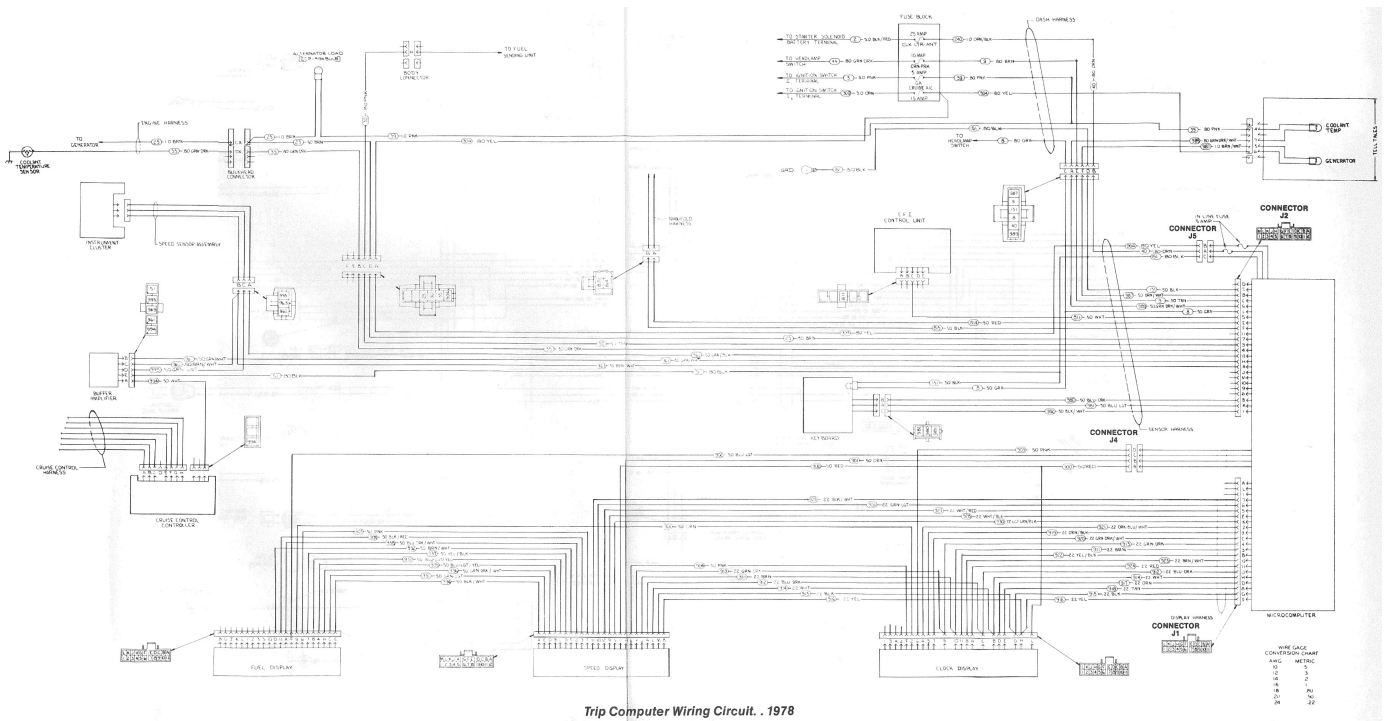


Figure 27-1 - Trip Computer Wiring Circuit. 1978

Trip Computer Wiring Circuit . 1978

## 28 - Body Wiring Circuit

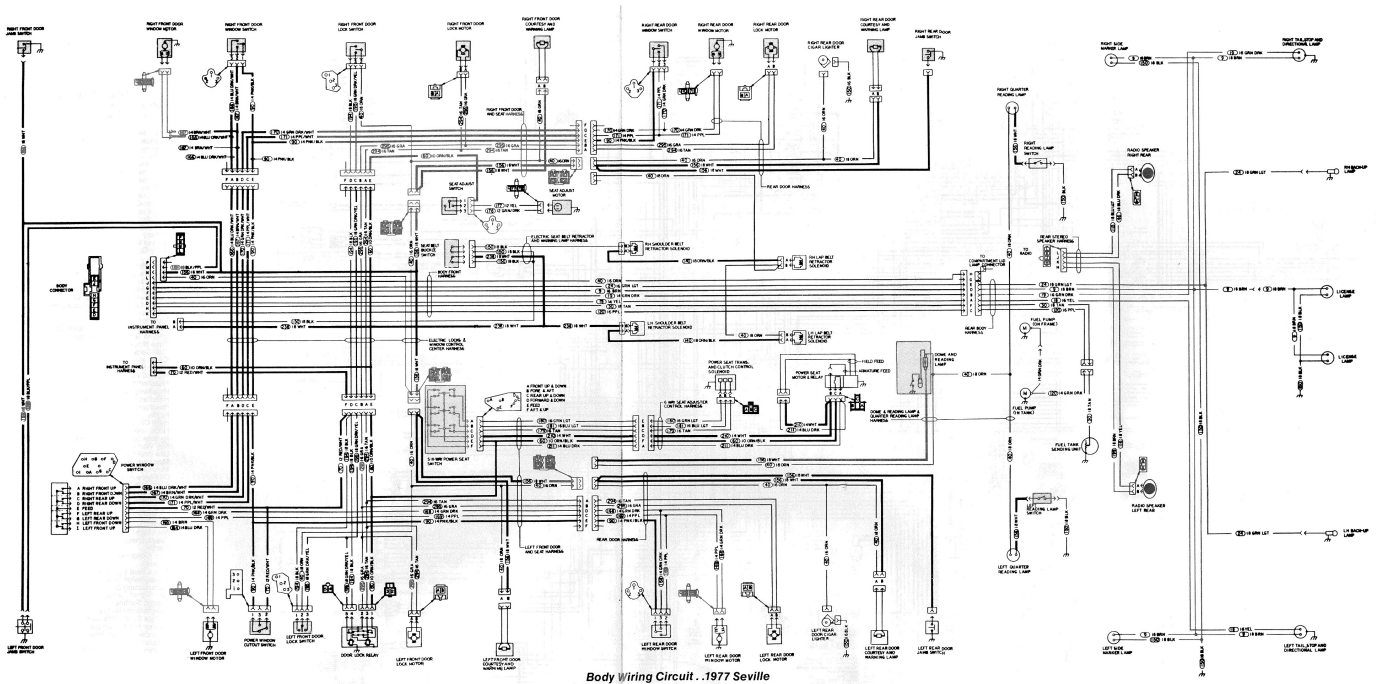


Figure 28-1 - Body Wiring Circuit. 1977

Body Wiring Circuit . 1977 Seville

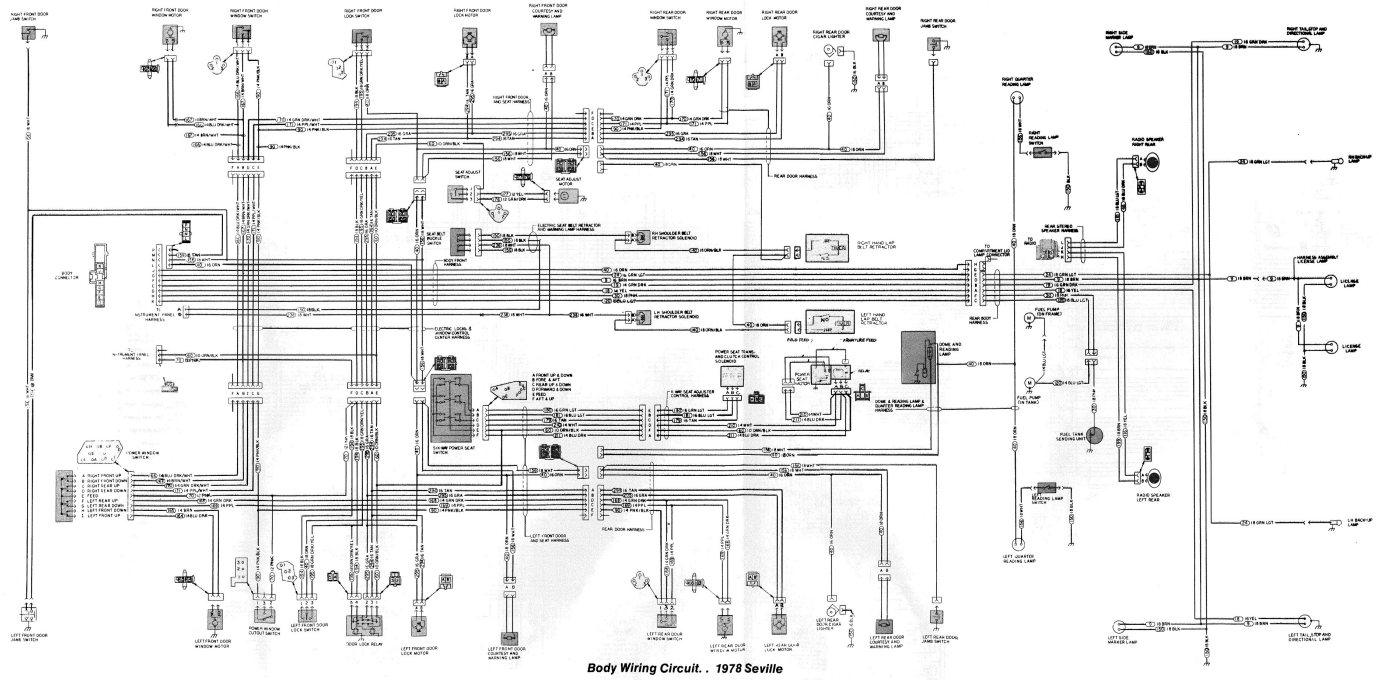


Figure 28-2 - Body Wiring Circuit. 1978

## 29 - Chassis Wiring Circuit 1977

[Back to the top](#)

### Component GridLocator

#### Nomenclature

A/C Compressor Clutch Coil  
 A/C Compressor Cycling Switch  
 A/C Low Pressure Switch  
 Accessory Switch Lamp  
 Ambient Sensor  
 Antenna Components  
 Ashtray assembly  
 ATC programmer & control head  
 ATC auto blower relay  
 ATC in-car sensor  
 Back up lamp switch  
 Battery  
 Blower motor  
 Clock  
 Cornering lamp switch  
 Courtesy lamp (left hand)  
 Courtesy lamp (right hand)  
 Cylinder head metal temperature heater switch  
 Cruise control circuit connector  
 Distributor  
 Down shift switch  
 Economy meter  
 E.F.I. Feed  
 Engine coolant temperature switch  
 Engine metal temperature switch  
 Fuse block  
 Generator  
 Glove box lamp

#### Location

B-2  
 B-2  
 A-2  
 E-7  
 A-4  
 B-3, B-4  
 D-8  
 A-5, B-5  
 A-3  
 B-8  
 D-5  
 A-2  
 A-3  
 B-9  
 E-4  
 A-7  
 D-7  
 B-2  
 C-8  
 A-2  
 D-5  
 B-3  
 E-5  
 C-2  
 B-2  
 A-6  
 A-1  
 D-7

Hazard warning switch	E-4
Headlamp switch	A-9
Headlamp dimmer switch	D-4
Headlamps	C-1, D-1
Horn relay	D-2
Ignition key alarm & switch	D-4, E-4
Instrument panel ground	E-7
Key warning buzzer	D-6
Low brake warning switch	E-3
Oil pressure switch	C-3
Parking brake switch	D-4
Parking lamps (left hand)	E-1
Parking lamps (right hand)	B-1, C-1
Radio	C-9
Seat belt warning chimes & timer	D-7, D-8
Speakers	B-8
Speedometer cluster & connector	D-9
Starter motor	B-1
Stop lamp switch	D-5
Telltale cluster	C-8
Transmission downshift coil	C-2
Turn signal flasher	E-4
Twilight Sentinel amplifier connector	A-8
Twilight Sentinel Photocell	A-9
Twilight Sentinel potentiometer	A-9
Washer fluid level switch	C-2
Windshield pulse, wipe & washer assembly	D-2
Windshield washer switch	
Windshield wiper switch	E-9

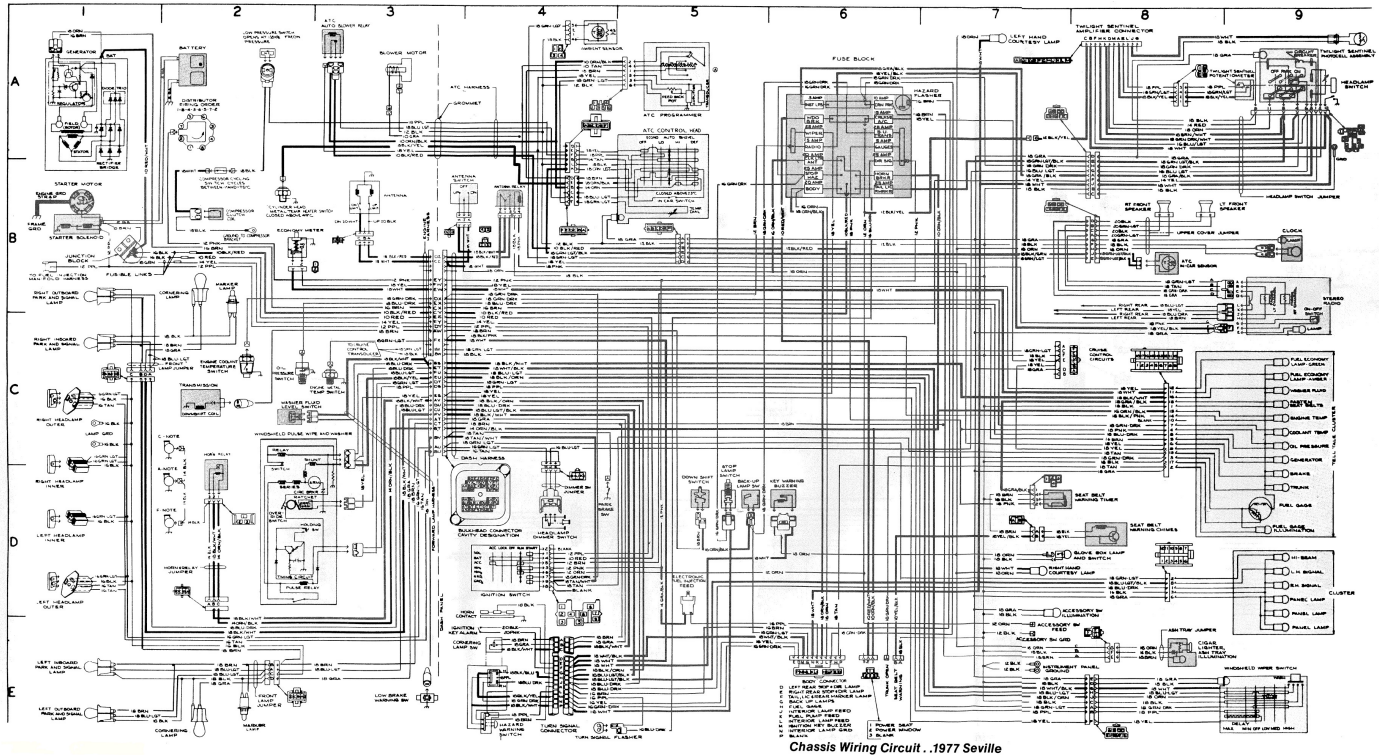


Figure 29-1 - Chassis Wiring Circuit. 1977

[Back to the top](#)

## Component GridLocator

<b>Nomenclature</b>	<b>Location</b>
A/C Compressor Clutch Coil	B-2
A/C Compressor Cycling Switch	A-2
A/C Low Pressure Switch	B-2
Accessory Switch	D-9
Ambient Sensor	A-6
Antenna Components	B-4, B-5
Ashtray Assembly	D-9
ATC Programmer & Control Head	A-6
ATC Auto Blower Relay	A-3
ATC In-Car Sensor	C-9
Back-Up Lamp Switch	D-7
Battery	A-2
Blower Motor	A-3
Clock	B-10
Cornering Lamps	B-2, E-2
Cornering Lamp Switch	E-5
Courtesy Lamp (left hand)	A-8
Courtesy Lamp (right hand)	D-9
Cylinder Head Metal Temperature Heater Switch	B-2
Cruise Control Circuit Connector	C-9
Distributor	A-2
Down Shift Switch	D-6
Economy Meter	B-2
E.F.I. Feed	D-6
Engine Coolant Temperature Switch	C-2
Engine Metal Temperature Switch	C-3
ESS Decoder	B-3
Exgouse Solenoid	D-3
Fuse Block	A-7
Generator	A-1
Glove Box Lamp	D-9
Hazard Warning Switch	E-5
Headlamp Switch	A-10
Headlamp Dimmer	D-5
Headlamps	C-1, D-1
Horns	D-2
Horn Contacts & Relay	D-5, E-7
Idle Stop Solenoid	A-2
Ignition Key Alarm & Switch	E-5
Key Warning Buzzer	D-7
Low Brake Warning Switch	E-3
Marker Lamps	B-2, E-2
Oil Pressure Switch	C-2
Parking Brake Switch	D-6
Parking Lamps (left hand)	E-1
Parking Lamps (right hand)	C-1
Radio	B-10
Seat Belt Warning Chimes & Timer	D-9
Speedometer Cluster & Connector	D-10
Starter Motor	B-1
Stop Lamp Switch	D-7
Tell-Tale Cluster	C-10
Transmission Downshift Coil	C-2
Turn Signal Flasher	E-6
Twilight Sentinel Amplifier Connector	A-9
Twilight Sentinel Photocell	A-11
Twilight Sentinel Potentiometer	A-10
Washer Fluid Level Switch	C-2

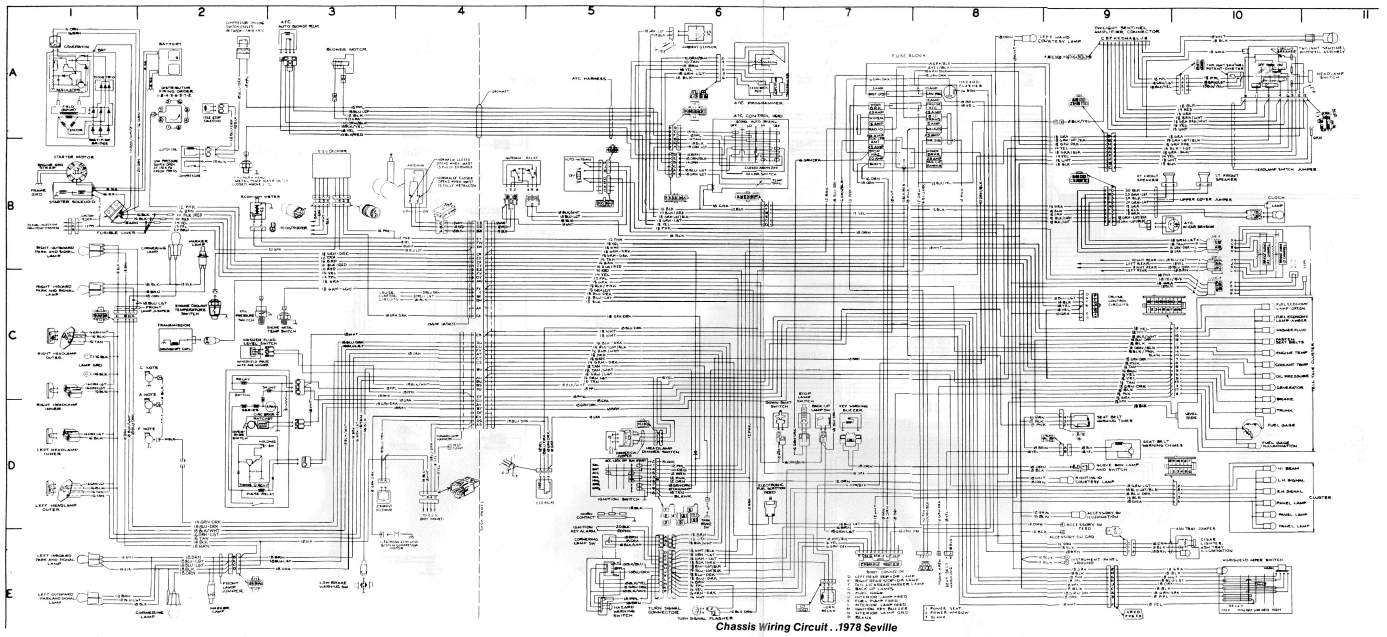


Figure 30-1 - Chassis Wiring Circuit. 1978