

In Motor Homing...
It All Begins With **IC**



Ictasca®

A DIVISION OF WINNEBAGO INDUSTRIES, INC.

You and

If you're an experienced motor home owner, you'll quickly realize that Itasca has listened and responded to your needs with motor homes superbly designed to combine style, function and value.

For the prospective first time owner, Itasca offers a distinctive and exciting solution to the confusion of judging which motor home best meets your needs. You can trust Itasca experience to answer the questions you may not know to ask.

That's important. Because there are many major differences that you can't see on the outside. Like the way the walls, floors and ceiling are constructed. Experience has proven our Thermo-Steel® construction to be an ideal combination of excellent insulation, high structural strength and minimal weight. On page 17 you'll see how we integrate the Thermo-Panels and steel frame to form a strong, durable motor home body.

And underneath our beautiful exterior there's our Chevrolet chassis, known throughout the industry for its outstanding ride, ruggedness and dependability. It also insures easy parts and service availability. More about the specific advantages of our chassis on page 17.

In addition to Itasca's major structural and mechanical advantages, you'll find a wide variety of special touches. Like convenience lights in the wardrobes.

Here are a few of the *standard features* which make Itasca the beginning of true motor home pleasure.

- **Automotive-Type, Entrance Door Latch Assembly** with double safety latch and dead bolt security lock.
- **Electrical Ground Fault Interrupter** protects occupants from severe electrical shocks in the bath area.
- **Plastic Plumbing with Inside Water Lines** won't rust, corrode or rot. Lessens winter plumbing freeze-ups.
- **LP Leak Detector.** All Itasca motor homes are equipped with an LP system leak detector for added safety and peace of mind.
- **Demand-Type Water System** moves water from tank to outlet using a smaller, quieter, more energy efficient pump.
- **Rounded Counter Top Corners** enhance beauty and safety.
- **Tinted Glass All Around** reduces glare and heat transmission, improves air conditioning and reduces sun-bleaching of fabrics.
- **Bolt Through Window Hardware** is stronger and more permanent than glue-on attachment methods.
- **Painted or Anodized Trim** eliminates streaks which can occur when bare aluminum trim is exposed to weather.
- **Deep Cycle Battery** provides longer-life, needs recharging less often and withstands repeated recharging far better than ordinary batteries.
- **Convenient Battery Access** makes battery service easier.
- **Screened Driver's and Passenger's Windows** allow for full air circulation and insect protection.
- **High Pressure Laminates on Counter Tops** for durability and easier clean-up.
- **Refrigerator Roof Vent** draws off maximum interior heat and improves refrigerator efficiency.
- **Removable Shelves in Wardrobes** lets you adjust space to your storage needs.
- **All-Wood Cabinets with Vinyl Faces** give warm, rich look with easy care.
- **25-Foot Rubberized 110-Volt Power Cord** permanently installed with outside access compartments.
- **Two Skylight Roof Vents** for a bright airy environment.
- **Frame-Mounted L.P. Gas Bottles** for convenient filling.
- **Formed Rear Bumper.**
- **Standard Rear Mud Flaps.**
- **Meets All State and Industry Codes.**
- **Meets Federal Motor Vehicle Safety Standards.**

Our dealers are as special as our customers

Itasca owners are demanding people. They choose Itasca to enjoy quality above the commonplace. We've selected our dealers accordingly. You'll find your Itasca dealer's staff is made up of well trained motor home professionals, ready to help you find just the right model to fit your family and your particular leisure lifestyle.

And when it comes to service when you're on the road, relax! With a coast-to-coast network of almost 200 Itasca dealers throughout North America, you can be sure of assistance when and where you need it.

That's peace of mind . . . with a capital **IC**.

Notable Options



▲ TV Entertainment Center



▶ Optional Drivers Door



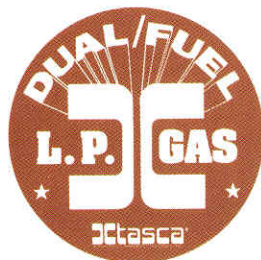
▲ Magic Chef Microwave Oven

▶ Rotary Air Conditioner



Traveling with Itasca means friendship . . .

There's a fraternity of especially nice people who'll be your fellow travelers when you're on the road. It's called "The Itasca Travel Club." Your inexpensive membership will let you in on the fun and excitement of Itasca Motor Home rallies. Plus, you'll receive our monthly newspaper filled with pictures and stories of club activities.



Alternative fuel choices get you on the road and keep you there.

With Dual/Fuel Energy Option you can travel on gasoline or switch to economical propane. Liquid propane as an alternative fuel is less expensive, readily available and offers clean, economical performance.

A steel plate tank, combined with automatic shut off features, make LP fuel as safe as it is convenient. Dual/fuel gives you a choice for true recreational freedom.

Winterization package

This option makes your Itasca a cozy lodge for wintertime fun. Skiing . . . snowmobiling . . . ice fishing . . . winter vacations, a whole season of family recreation.

Package includes: 30,000 BTU furnace (standard on Sunflyer 29RT), large LP tank (standard on Sunflyer), auxiliary automotive heater in rear, heavy-duty battery, insulated privacy curtains, storm windows, insulated roof vent covers, added insulation in critical areas, holding tank heating system (available on Suncruiser 26RT only).

Uncomparable Value

Sundancer™

We're convinced that there's not another mini motor home on the market that can offer you so many exciting features for such an affordable price.

Sundancer is a trim 24 feet, with every inch perfectly utilized. The kids will love the spacious bunk beds in the rear. And you'll appreciate the home-style privacy of the solid door which encloses the bath, with tub and shower compartment.

Easy-care vinyl covered walls and stain resistant counter tops make clean-up, even with a family, quick and easy.

Most important, Sundancer shares all the outstanding Itasca structural features like Thermo-Steel® walls and ceiling and our heavy-duty Chevy chassis with smooth-riding independent front suspension.

Look closely at Itasca Sundancer. It's America's first choice for affordable family motor homing fun.



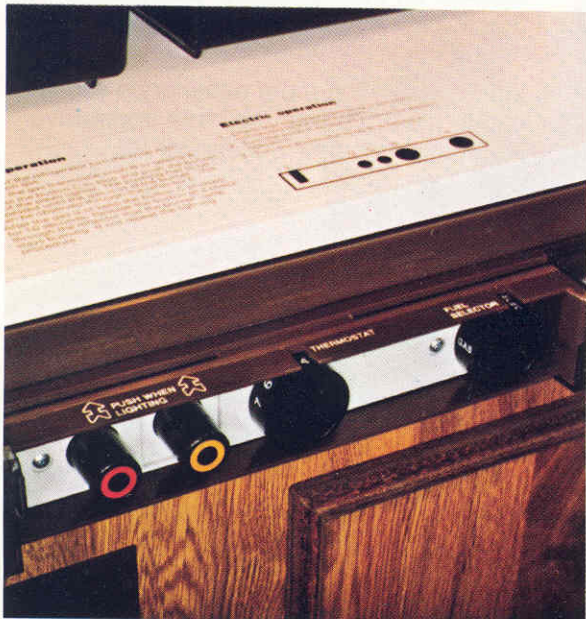
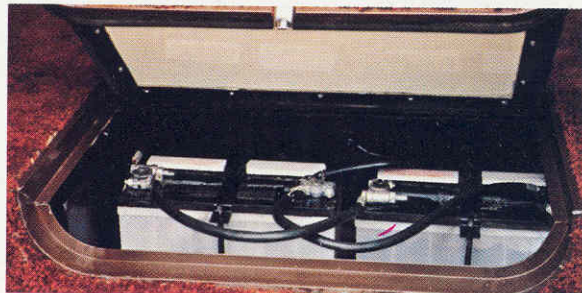
◀ Sundancer 24RH



▲ Sundancer 24RH with Optional Seating

◀ Flat Cabinet Latches

▶ Convenient Battery Access



◀ Three Way (gas, 12 VDC, 110 VAC) Refrigerator



▶ Ample Exterior Storage



◀ Tilt Steering Wheel, Standard

Innovation

Sundancer™ SE

You've got a choice in motor homes. To follow the followers . . . or to go with the leader. When it comes to innovative design and engineering for the '80s, it all begins with Itasca. And Sundancer SE is our most notable example of planning ahead to meet the challenges of the brand new decade.

Aerodynamically sleek outside. Sumptuous within. Brilliantly appointed. Superbly livable.

Sundancer SE Model 21RB offers all the advantages of compact size and light weight for extra economy on the road. It's the perfect choice for shorter trips and smaller families. Adult, roomy beds sleep five in comfort. And there's the full complement of appliances, from the six cubic-foot refrigerator and four-burner stove to the full bath with shower. Twenty-one feet in outside length, 21RB offers ample storage space and handles beautifully thanks to the dependable Chevy chassis.

Sundancer SE Model 25RB features an extra measure of space and luxury. In fact, both our Sundancer SE models are upholstered, carpeted and appointed with the same special care that's made our top-of-the-line Sunflyer series an outstanding example of interior elegance.

If you enjoy entertaining, you'll appreciate the 25RB's extra spaciousness for those special occasions. Special standard features on the Sundancer SE include power bath and stove vents and a mounting rail for an exterior awning.

We're certain the more experience you've had in motor homes, the more impressive you'll find your new Sundancer SE.

▶ Sundancer SE 25RB





▲ Tambour Roll-up Cabinet Doors

Sundancer SE 21RB ▲

Hi-Back Bucket Seats in Cab (tilt, swivel, slide) ▶

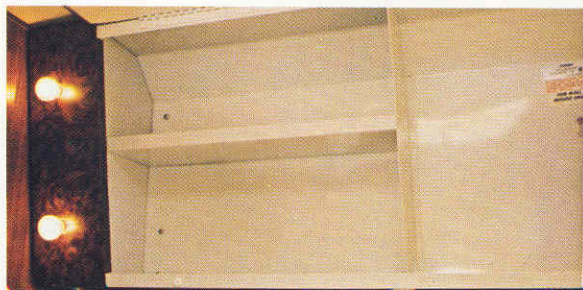


▶ Formed ABS Spare Tire Cover ▲

Medicine Cabinet ▶



▶ Sleek, Aerodynamic Body Style ▲



Imagination

Suncruiser®

Suncruiser feels special inside. It's a soothing, restful environment fashioned with the caring touch of our most imaginative interior designers. Warm colors, rich fabrics and glowing woods.


As a traveler, Suncruiser is a thoroughbred, offering you the well-mannered roadability that's characteristically Itasca, a result of our choice of Chevrolet as the preferred chassis.

Three exciting models round out the Suncruiser line, each with special features and individual floorplans. Choose from the 22RB, compact and cozy with a convenient and roomy rear bath; the 26RH with rear bunk beds and spacious living/dining area; or the 26RT, featuring a private rear sleeping compartment.

All Suncruisers are equipped with the Itasca emergency start solenoid. It allows the use of the auxiliary battery for starting, and gives you an extra measure of security when on the road.

Under floor spare tire storage is standard in '80 in the 26RT and RH. And you'll even find the unexpected convenience of a clothes hamper in both the 22RB and 26RH this year.

When you consider all the features and conveniences built into your new Suncruiser, you may think we haven't left much to your imagination.

Not so. Think of the worlds of motor homing pleasure you have in store. And they all begin with .



◀
Suncruiser 22RB



▲ Suncruiser 22RB

▶ Built-in Trash Container

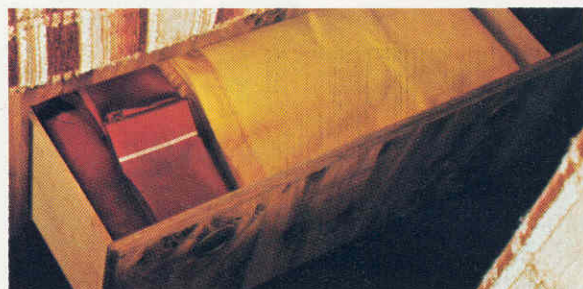


▶ Dual Stainless Steel Sink



▲ Exterior Access to Above Floor Storage Area

▶ Blanket Drawer in Couch



▶ Cushion Retainers

Individuality

Sunflyer®

If you like to travel through this world a bit apart from the crowd, you're probably a Sunflyer kind of person.

Sunflyer is really the ultimate Itasca, a rare combination of advanced engineering, innovative design and imaginative styling.

This is a motor home designed to please the hard to please. We created Sunflyer especially to satisfy the demands of the more experienced and discerning owner.

Both the 26-foot 26RB and the 29-foot 29RT offer incomparable interior design. Richly finished hardwoods and elegant fabrics set a tone of quiet dignity. And the full complement of fine name appliances assure Sunflyer owners of continuing excellent performance and long-term satisfaction.

You'll find small but meaningful conveniences in abundance. Like automatic wardrobe lights in all models.

Plus performance features including an electronic ignition system that takes the fuss out of lighting the furnace. And the new Motoraid Water Heater which uses engine heat to create hot water while you're traveling.

We put everything we know about building motor homes into our new Sunflyer. It's handsome, luxurious and, above all, very distinctive. Truly a motor home for personal pride and pleasure.



◀
Sunflyer 29RT



▲ Sunflyer 29RT with Optional Seating



Deluxe Monitor Panel with Digital Alarm Clock



▲ AM/FM Multiplex Radio with 8-Track Stereo Tape Player



Tambour Insert in Refrigerator Door



▲ Floor Courtesy Lights

Itasca . . . Our Commitment is a matter of record

What's in a name? In selecting a motor home, the name can make the difference between a questionable purchase and a sound investment in years of satisfying performance. A motor home manufacturer's past record and reputation for quality is your best guide when making a decision.

At Itasca, we're confident that the more you know about our company, the better you'll feel about owning our product.

You may know that Itasca is made by Winnebago Industries, a large, well respected company. And one with an interesting history.

In the late '50s, John K. Hanson, a local businessman in the little town of Forest City, Iowa, hit on the idea of building travel trailers as a promising industry for his community.

By 1959, the townspeople were solidly in that business and Winnebago Industries was well on its way to prominence.

Year after year, Winnebago gained experience, profited by both its successes and failures and continued to refine its products. The number of employees grew from tens to thousands, until . . .

The fire of '64!

In 1964, in the midst of a very successful year, a fire wiped out Winnebago's entire manufacturing capability. During the months that followed, America learned an important lesson about the young company's determination and commitment. Four weeks after the fire, ground was broken for a new plant and in only six months, the production lines were rolling again.

Through the years Winnebago Industries has continually stood by its commitment to its widespread dealer network and to the thousands of motor home owners.

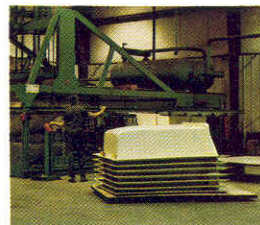
Itasca . . . A design for the future

In 1974, Winnebago Industries decided to take a hard look at the changing needs of the motor homing public. Based on a thorough market analysis, the idea of a new motor home line was conceived. Itasca was designed to match a newly emerging leisure lifestyle with features keyed to the needs of more sophisticated and demanding motor home buyers.

Now, as we enter the challenging new decade of the '80s, Itasca's alert, experienced and innovative leadership, combined with a proven commitment to long-term success, make "The Itasca Difference." Today, with over 100,000 motor homes produced and a total capital investment in plant and equipment of nearly \$50 million, Winnebago Industries is truly a company you can believe in with confidence.



As a manufacturer, our philosophy is simple: If you want it done right, you do it yourself!



80% of what goes into an Itasca is made right here in our shops by highly skilled Itasca craftsmen. So we *know* it will meet our rigid standards.

Since we do our own metal fabrication, plastic forming, upholstery and wood crafting, we're not limited by the availability of outside

suppliers' products. (A problem faced by other manufacturers.) In creating our Itascas for '80, we designed to please *you*. Then built what we needed to keep the integrity of that design.

Now you know why your Itasca motor home is truly an *original*.

In Motor Homing, It All Begin

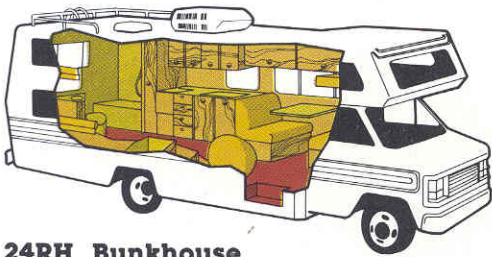
Sundancer

Uncomparable Value

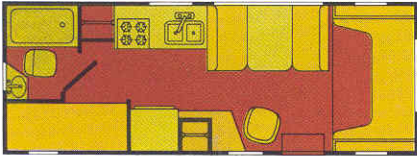
No other mini motor home offers so many exciting features for such an affordable price. Kids love the spacious rear bunk beds. And you'll appreciate the home-style privacy of the bi-fold bath door which encloses the bath, with tub and shower compartment.

Easy-care vinyl covered walls and stain resistant counter tops make clean-up quick and easy. Sundancer shares all the outstanding Itasca structural features like Thermo-Steel® walls and ceiling and our heavy-duty Chevy chassis with smooth riding girder beam front suspension and independent coil springs.

It's easy to see why Sundancer is America's first choice for affordable family motor homing fun.



24RH Bunkhouse



Sundancer 24RH Floorplan Options

Left Side:

- Dinette — std
- Sprung couch — option

Right Side:

- Swivel chair — std

Suncruiser

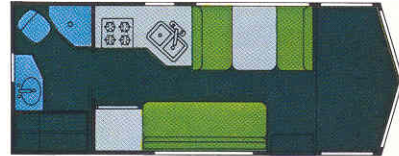
Imagination

Suncruiser's soothing, restful interior shows the caring touch of imaginative interior designers. Warm colors, rich fabrics and glowing woods.

You'll appreciate the well-mannered roadability of our time-proven Chevrolet chassis.



22RB



Suncruiser 22RB Floorplan Options

Left Side:

- Dinette — std
- Sprung couch — option

Right Side:

- Convertible couch — std
- Lounge chairs — option
- Sprung couch — option

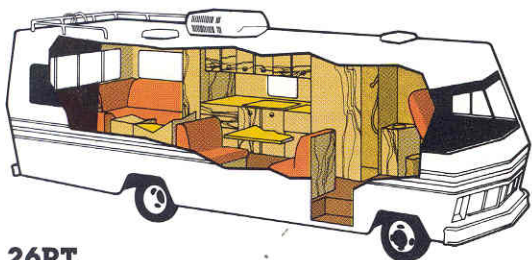
s With DC... Dctasca[®]

Choose from three models: the 22RB, compact and cozy with a convenient and roomy rear bath; the 26RH with rear bunk beds and spacious living/dining area; or the 26RT, featuring a private rear sleeping compartment.

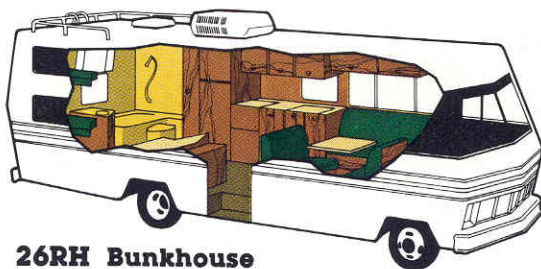
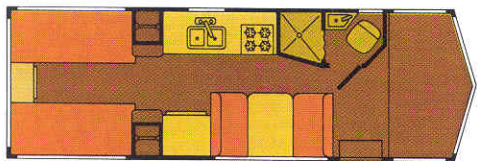
All Sun Cruisers feature the emergency start solenoid which allows the use of the auxiliary

battery for starting and provides an extra measure of security on the road.

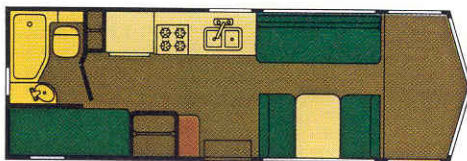
Under-floor spare tire storage is standard and there's even the unexpected convenience of a clothes hamper in both the 22RB and 26RH.



26RT



26RH Bunkhouse



Sun Cruiser 26RT Floorplan Options

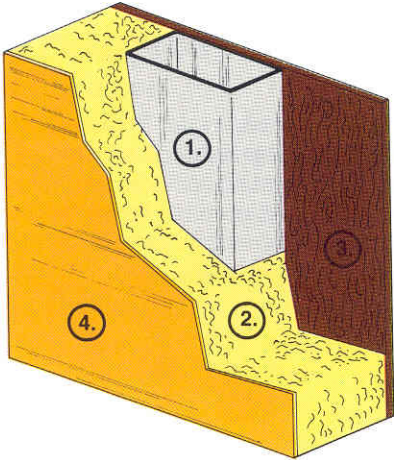
- Front:
 Dinette — std
 Lounge chairs — option

- Rear:
 Twin Beds — std
 Double Bed — option
 Horseshoe Lounge — option
 Lounge chairs/Sprung couch — option

Sun Cruiser 26RH Floorplan Options

- Left Side:
 Convertible Couch — std
 Sprung couch — option
- Right Side:
 Dinette — std
 Lounge Chairs — option

What sets Itasca apart is the way it's put together



Thermo-Steel® Sidewall

1. 18 gauge steel tubing (external to wall in 26' models)
2. 1.5" thick rigid polystyrene R-8.4 insulation factor
3. 4 mm thick vinyl laminated lauan veneer
4. .024 thick aluminum outer wall w/baked enamel finish

Thermo-Steel®

A stronger way to beat the climate

We gave up "stick-building" years ago in favor of modern steel frame construction. Some companies still build motor homes of thin wooden struts and batts of fiberglass insulation.

But with increasing concern about safety, Itasca's Thermo-Steel® construction means a lot. The cage-like structure is unitized by bolting the coach framing to steel outriggers which are welded to the chassis frame.

The walls, floor and ceiling of your Itasca form an "environmental envelope" constructed from a special kind of sandwich panel: an outer layer of aluminum, a thick core of Styrofoam®, followed by vinyl-laminated lauan paneling. These components are joined with a high strength glue. Producing a bond that's stronger than parts it joins together.

Recent design refinements have permitted incorporation of the steel frame as an integral part of the wall sandwich, providing improved appearance and space utilization.

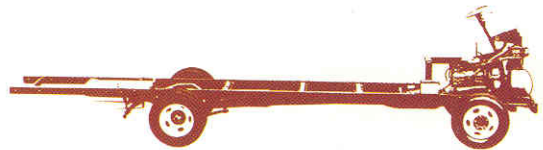
THERMO-STEEL® OFFERS ALL THIS:

- It's Light . . . for greater operating economy.
- It's Quieter . . . less road and wind noise.
- Solid and Strong . . . no "voids in the insulation."
- Warm (or Cool) and Weather Resistant . . . an R factor of 8.4!
- Insulation will not absorb and hold moisture . . . protects the wood for longer life.

Before it's an Itasca, it's a Chevy!

Your satisfaction with a new motor home depends greatly on the design of the chassis. Ride, handling and repair frequency are of critical importance. Millions of highway miles

driven under all weather and road conditions have established a performance record for the Chevrolet chassis you can trust.



Here's what makes Itasca's Chevrolet chassis a fine beginning for a great motor home.

- Lower center of gravity for improved stability.
- Girder beam independent front suspension with ride-smoothing independent coil springs.
- Dual rear wheels and front stabilizer bar for greater capacity and extra stability.
- Hydraulic power assisted brakes. Front and rear disc brakes for improved braking performance. (On 178" wheel base only.)
- Heavy-duty Freedom battery and Delcotron generator provide high performance and low maintenance.
- Transmission oil cooler for maximum operating life.
- Six-position comfort-tilt steering wheel.
- Tremendously strong, 39,000 psi carbon-steel frame with heavy channel reinforcements in front frame members.
- High-energy ignition system helps cold-weather starts and ignites marginal fuel/air mixtures. Solid state design eliminates breaker points.
- Dual exhaust system for optimum performance.
- Parts available from thousands of Chevrolet dealers.

Sundancer SE

Innovation

Sundancer SE is our most notable example of design and engineering to meet the challenges of a brand new decade.

Aerodynamically sleek outside. Sumptuous within. Brilliantly appointed. Superbly livable.

Sundancer SE 21RB offers compact size and light weight for extra economy on the road. Perfect for shorter trips and smaller families. Soft, roomy beds sleep five.

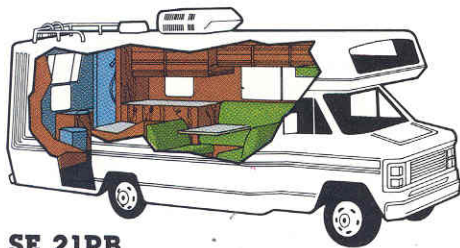
You'll like the variety of conveniences like the six cubic-foot refrigerator, a four-burner stove and even a full bath with shower. Plus ample

storage space and fine handling on the road thanks to the dependable Chevy chassis.

If you enjoy entertaining, you'll appreciate the 25RB's luxury and extra spaciousness.

Special standard features on the Sundancer SE include power bath and stove vents and a mount for an exterior awning.

The more experience you've had in motor homes, the more impressive you'll find your new Itasca Sundancer SE.



SE 21RB



Sundancer SE 21RB Floorplan Options

Left Side:

Sprung Couch — std

Right Side:

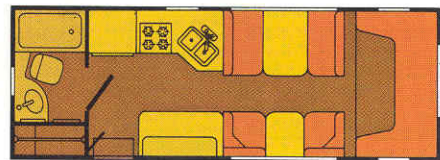
Dinette — std

Entertainment Center — option

Lounge chairs — option



SE 25RB



Sundancer SE 25RB Floorplan Options

Left Side:

Dinette — std

Sprung couch — option

Right Side:

Lounge chairs — std

Entertainment Center — option

Sprung couch — option

Sunflyer

Individuality

We created Sunflyer especially to satisfy the demands of the more experienced and discerning owner. Both the 26RB and the 29RT offer richly finished woods and elegant fabrics which set a tone of quiet dignity. A full complement of fine name appliances assure excellent performance and long-term satisfaction.

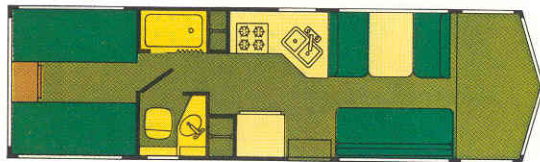
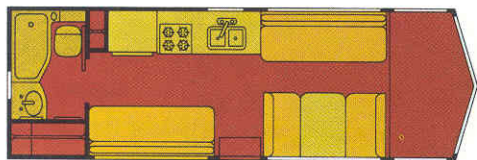
You'll find small but meaningful conveniences like automatic wardrobe lights in all models. Plus performance features including electronic furnace ignition and the new Motoraid Water Heater which uses engine heat to create hot water while you're traveling.



26RB



29RT



Sunflyer 26RB Floorplan Options

Left Side:

Sprung couch — std

Right Side (front):

Dinette — std

Lounge chairs — option

Entertainment center — option

TV Entertainment center — option

Right Side (rear):

Sprung couch — std

Sunflyer 29RT Floorplan Options

Left Side (front):

Dinette — std

Sprung couch — option

Entertainment center — option

TV Entertainment center — option

Right Side (front):

Sprung couch — std

Lounge chairs — option

Swivel chairs — option

Sprung couch — option

Rear:

Twin beds — std

Double bed — option

Horseshoe lounge — option

Itasca Specifications

	Sundancer 24RH	Sundancer SE 21RB	Sundancer SE 25RB	Suncruiser 22RB	Suncruiser 26RT	Suncruiser 26RH	Sunflyer 26RB	Sunflyer 29RT	
Length — overall	24'8"	21'1"	24'4.5"	22'2.5"	25'11"	26'8"	26'5"	29'11"	
Width — interior	7'7"	7'7.5"		7'7"					
Height — exterior	10'			9'4.5"				9'5.5"	
Height — interior	6'8"	6'6"		6'5.75"	6'5.5"			6'6.5"	
Chassis	Chevrolet								
Wheelbase	157"	133"	157"	137"	159"			178"	
Gross Vehicle Weight Rating (lbs.)	11,000			11,800	12,300			14,500	
Engine Standard (cubic inches)	350						454		
Transmission	3-speed automatic								
Steering	integral power, tilt wheel								
Brakes	power; front disc, rear drum								
Suspension — front	coil springs				coil spring w/aux. air springs				
Suspension — rear	leaf springs								
Tires	8.75x16.5D			7.50x16.0D				8x19.5D	
Rear Axle Ratio	4.10:1							4.56:1	
Battery — auto	50 amp			80 amp					
Battery — auxiliary	105 amp								
Sleeping Accommodations									
Standard	dinette 38"x73"								
	cab-over bunk 54"x76"	cab-over bunk 54"x75"	conv. couch 45"x76"	twin beds 28"x75"	bunk beds 29"x75½"	sprung couch 45"x75"			
	bunk beds 29"x75½"			rear cabinet bunk 34"x76"	convertible couch 39"x76"	twin beds 28"x75"			
Optional	sprung couch 45"x75"					fr. pull down bunk 47"x79"	double bed 54"x75"		
			pull down fr. bunk 31½"x79"	double bed 54"x75"	fr. pull down bunk 47"x79"	lounge chairs 26"x78"	rear horseshoe lounge 77"x85½"		
			lounge chairs 26"x78"	rear horseshoe lounge 77"x85½"	convertible couch 39"x76"		fr. pull down bunk 47"x79"		
				rear pull down bunk 48"x80"	lounge chairs 26"x78"		lounge chairs 26"x78"		
				fr. pull down bunk 31½"x79"					
				lounge chairs 26"x78"					
Capacities									
Fresh Water (gal.)	52	36	60	52	44	52		71	
Holding Tank — main (gal.)	33	32		26	25	32		40	
Holding Tank — aux. (gal.)	20	23	25	25	19	25		30	
L.P. Gas (lb.)	42						83		
Fuel Tank — main (gal.)	40			75					

Itasca's continuing program of product improvement makes specifications, equipment, model availability and prices subject to change without notice. Some items shown may be extra cost options.

Major Options available for Itasca Motor Homes

Space does not permit a full listing of all options. Please see your Itasca Dealer.

	Sundancer 24RH	Sundancer SE 21RB	Sundancer SE 25RB	Suncruiser 22RB	Suncruiser 26RT	Suncruiser 26RH	Sunliner 26RB	Sunliner 29RT
Cruise Control	optional	optional	optional	optional	optional	optional	optional	optional
Radio, AM	standard	standard	standard	standard	standard	standard	n/a	n/a
Radio, AM/FM w/8-Track	optional	optional	optional	optional	optional	optional	standard	standard
Radio, AM/FM w/Cassette	optional	optional	optional	optional	optional	optional	optional	optional
Electronic Tuning	optional	optional	optional	optional	optional	optional	optional	optional
Dlx. Sound System w/8-Track	n/a	n/a	n/a	n/a	n/a	n/a	optional	optional
Dlx. Sound System w/Cassette	n/a	n/a	n/a	n/a	n/a	n/a	optional	optional
40-Channel CB w/Ant.	n/a	n/a	n/a	optional	optional	optional	optional	optional
19,000 BTU Furn.	standard	standard	standard	standard	standard	standard	n/a	n/a
24,000 BTU w/Elec. Ign.	optional	optional	optional	optional	optional	optional	standard	n/a
30,000 BTU w/Elec. Ign.	optional	n/a	optional	optional	optional	optional	optional	standard
34,000 BTU w/Elec. Ign.	n/a	n/a	n/a	n/a	n/a	n/a	n/a	optional
3-Way Refrigerator(Gas/Electric)								
6 Cu. Ft. (4 Cu. Ft. AGA)	standard	standard	standard	standard	standard	standard	n/a	n/a
8 Cu. Ft. (7 Cu. Ft. AGA)	optional	optional	optional	optional	optional	optional	standard	standard
10 Cu. Ft. (7.9 Cu. Ft. AGA)	n/a	n/a	n/a	n/a	n/a	n/a	optional	optional
Motoraid Water Heater	optional	optional	optional	optional	optional	optional	standard	standard
Rear Auto Heater	optional	optional	optional	optional	optional	optional	optional	optional
Microwave Oven	optional	optional	optional	optional	optional	optional	optional	optional
11,000 BTU Roof A/C	optional	optional	optional	optional	optional	optional	optional	optional
13,500 BTU Rotary Roof Air	optional	optional	optional	optional	optional	optional	optional	optional
Heat Element (13,500 BTU, 1 Cond. Only)	optional	optional	optional	optional	optional	optional	optional	optional
3,000 W. Generator	n/a	optional	n/a	n/a	n/a	n/a	n/a	n/a
4,000 W. Generator	optional	n/a	optional	optional	optional	optional	optional	optional
5,000 W. Generator	n/a	n/a	n/a	n/a	optional	optional	optional	optional
6,500 W. Generator	n/a	n/a	n/a	n/a	n/a	n/a	optional	optional
TV Antenna w/Jack	optional	optional	optional	optional	optional	optional	optional	optional
Woven Wood Shades	optional	standard	standard	optional	optional	optional	standard	standard
Vacuum Cleaner	n/a	n/a	n/a	n/a	n/a	n/a	optional	optional
Awning Rail	standard	standard	standard	optional	optional	optional	standard	standard
Winterizing Pkg.	optional	optional	optional	optional	optional	optional	optional	optional
Dual/Fuel Energy Option	optional	optional	optional	optional	optional	optional	optional	optional
Drivers Door	n/a	n/a	n/a	optional	optional	optional	optional	optional

A DIVISION OF WINNEBAGO INDUSTRIES, INC.
P.O. Box 555
Forest City, Iowa 50436
Telephone (515) 582-2636

Copyright 1979 Printed in USA

Itasca[®]
A DIVISION OF WINNEBAGO INDUSTRIES, INC.

