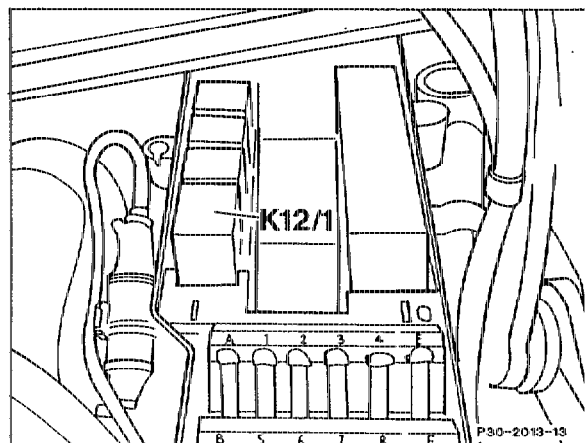


**A. Procedure models 124.128/133/193/333/393 up to 06/90
vehicles without emission control system**

Removal, installation

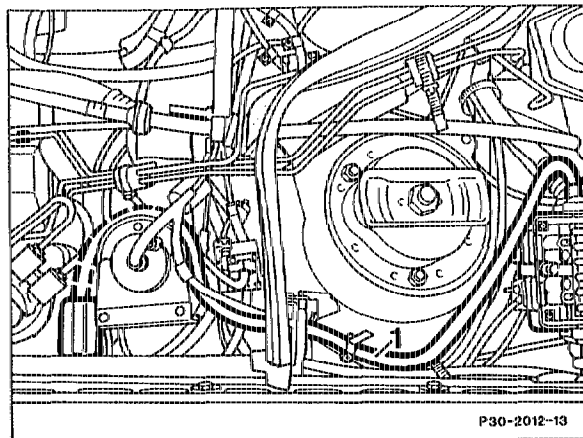
- 1 Make harness according to section C.
- 2 Disconnect ground cable on battery.
- 3 Remove cover of fuse and relay box.
- 4 Loosen fuse carrier and unclip relay holder.
- 5 Pull cable end with the 4 jacks through the rubber grommet laterally at the right into fuse and relay box. Then mount 6-pin connector on harness (for assignment refer to section C).
- 6 Clip 6-pin connector into relay holder of fuse and relay box (field E).

- 7 Mount relay holder and connect Tempomat/cruise control boost air cut-off relay (K12/1).
- 8 Install cover of fuse and relay box.



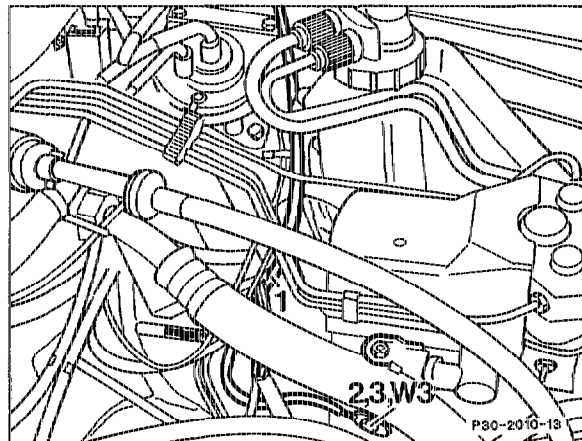
9 Install harness (1) on left-hand wheelhouse toward plug connection of Tempomat/cruise control actuator.

10 Mount 8-pin intermediate plug of harness between plug connection of Tempomat/cruise control actuator.



11 Install ground cable at ground W3 and screw on.

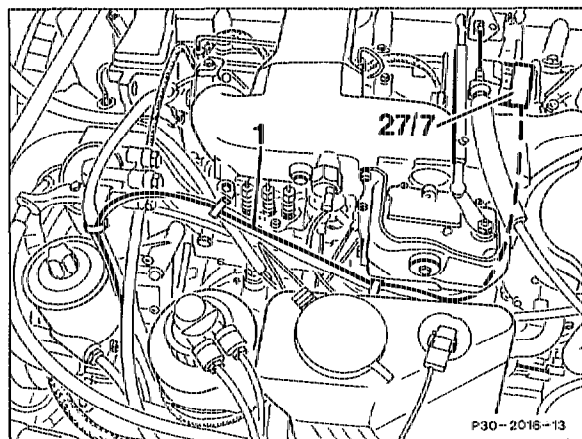
- 1 Harness
- 2 Screw M6x16
- 3 Washer A6.4
- W3 Ground, left front wheelhouse (at ignition coil)



12 Install cable (1) with jack on actuator harness along towards A/C compressor/boost pressure cut-out microswitch (S27 or S27/7) on vehicles with refrigerant compressor and fasten.

13 On vehicles without refrigerant compressor

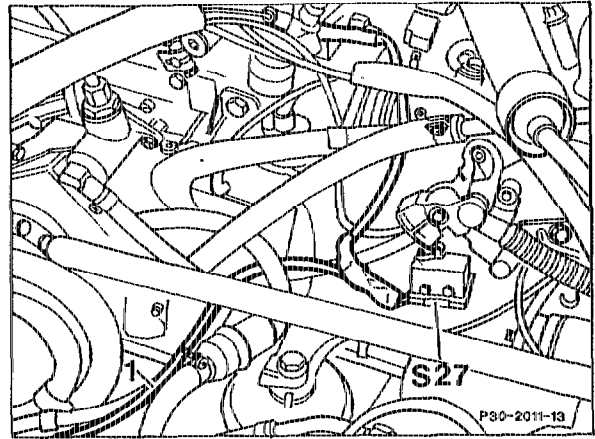
Take ground cable (layout 2) out of connector for boost pressure cut-out microswitch (S27/7), cut off jack and tie back cable. Then insert ground cable of new harness into layout 2.



14 **On vehicles with refrigerant compressor**
Remove grounding bridge in connector for A/C
compressor/boost pressure cut-out microswitch
(S27), insert remaining ground cable into layout
5. Then insert ground of new harness (1) into
layout 4.

15 Connect ground cable to battery.

16 Perform test drive.

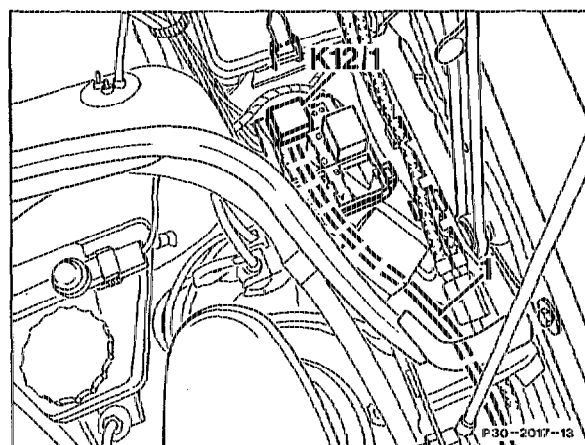


B. Procedure model 201.128 up to 06/90 vehicles without emission control system

- 1 Make harness according to section C.
- 2 Disconnect ground cable on battery.
- 3 Remove cover of auxiliary relay and fuse box and loosen relay holder.

4 Clip 12-pin connector of harness (1) into relay holder and fasten relay holder.

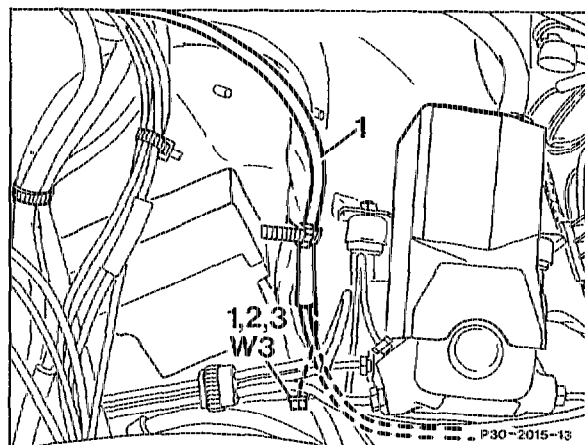
5 Press relay Tempomat/cruise control boost air cut-off (K12/1) on 12 pin connector and mount cover again on auxiliary relay and fuse box.



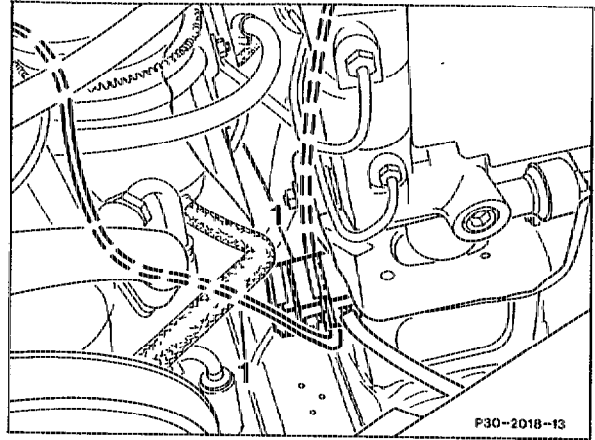
6 Install harness on left-hand wheelhouse to ground (W3).

7 Screw ground cable of harness (1) to ground (W3).

- 1 Harness
- 2 Screw M6x16
- 3 Washer A6.4
- W3 Ground, left front wheelhouse (at ignition coil)



8 Install harness (1) further towards plug connection of Tempomat/cruise control actuator and mount 8-pin intermediate plug between plug connection of Tempomat/cruise control actuator.

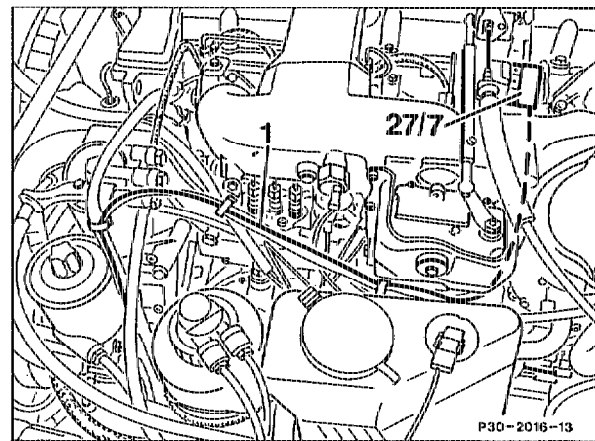


9 Install cable (1) with jack on actuator harness along towards A/C compressor/boost pressure cut-out microswitch (S27 or S27/7) and fasten.

10 On vehicles without refrigerant compressor

Take ground cable (layout 2) out of connector for boost pressure cut-out microswitch (S27/7), cut off jack and bind back cable. Then insert ground cable of new harness into layout 2.

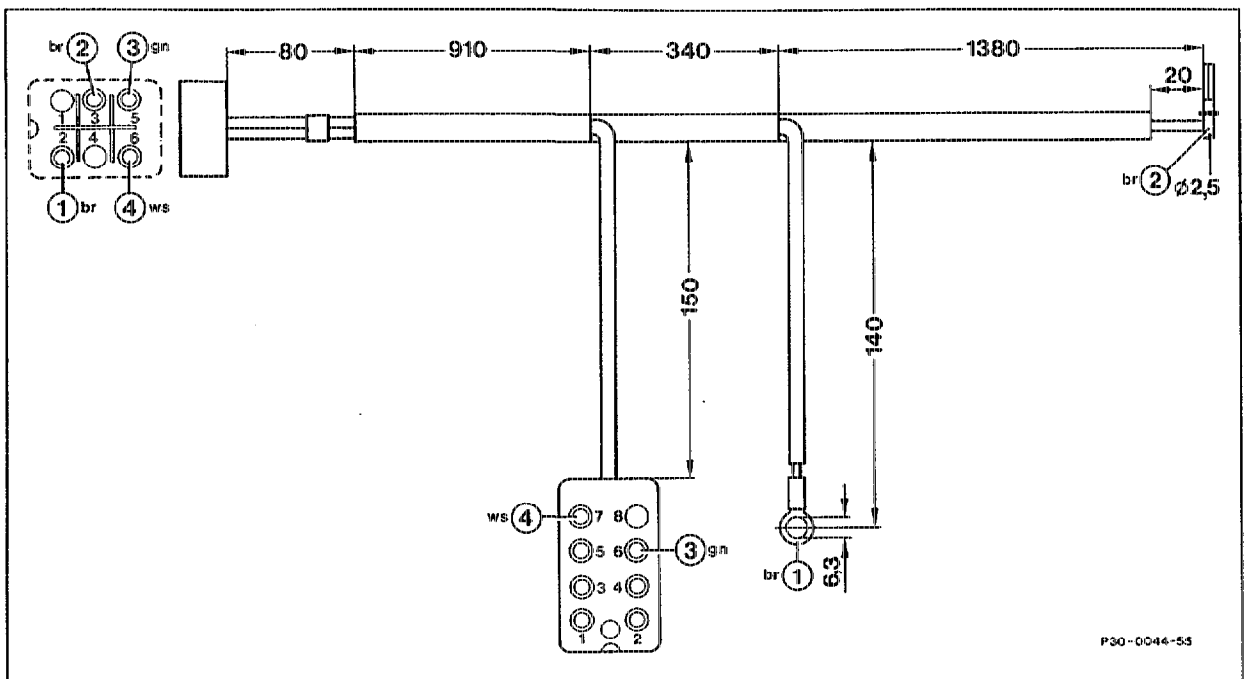
11 On vehicles with refrigerant compressor
Remove grounding bridge in connector for A/C compressor/boost pressure cut-out microswitch (S27), insert remaining ground cable into layout 5. Then insert ground cable of new harness (1) into layout 4.



12 Connect ground cable to battery.

13 Perform test drive.

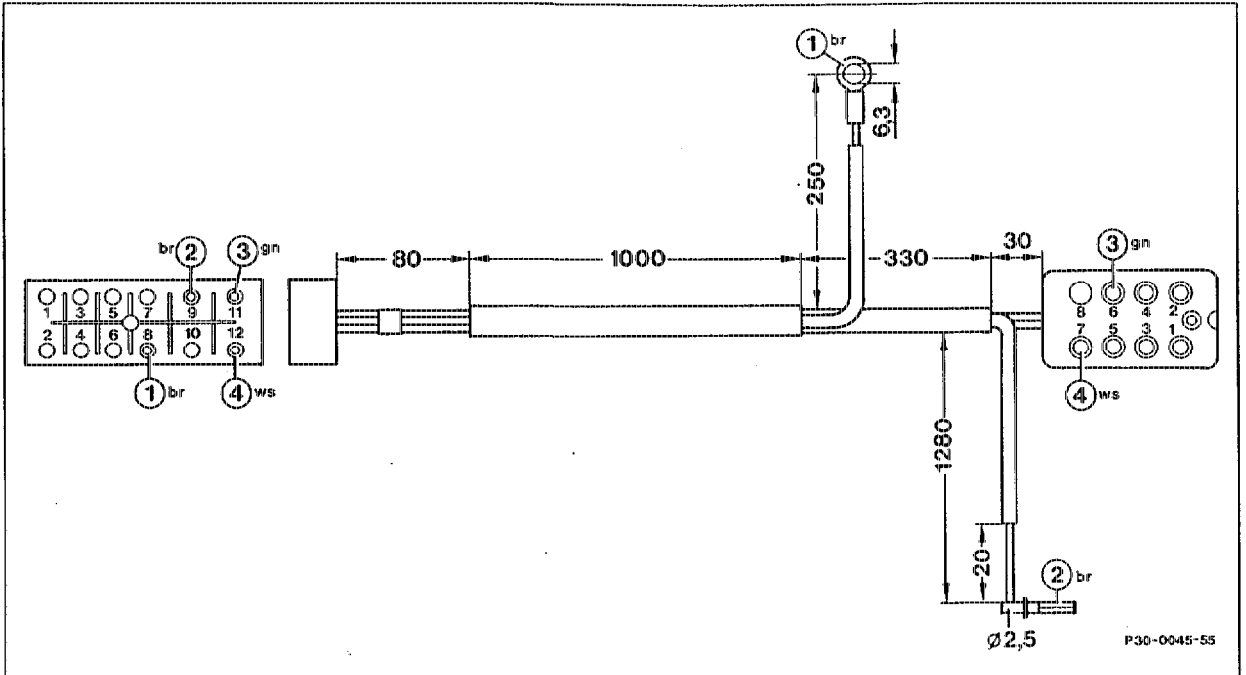
C. Harnesses and wiring diagrams



Harness for model 124

Note

Mount 6-pole connector only after harness has been installed in relay and fuse box. In addition, insert loose plug-in sockets on 8-pole intermediate plug into layouts 1 to 5.



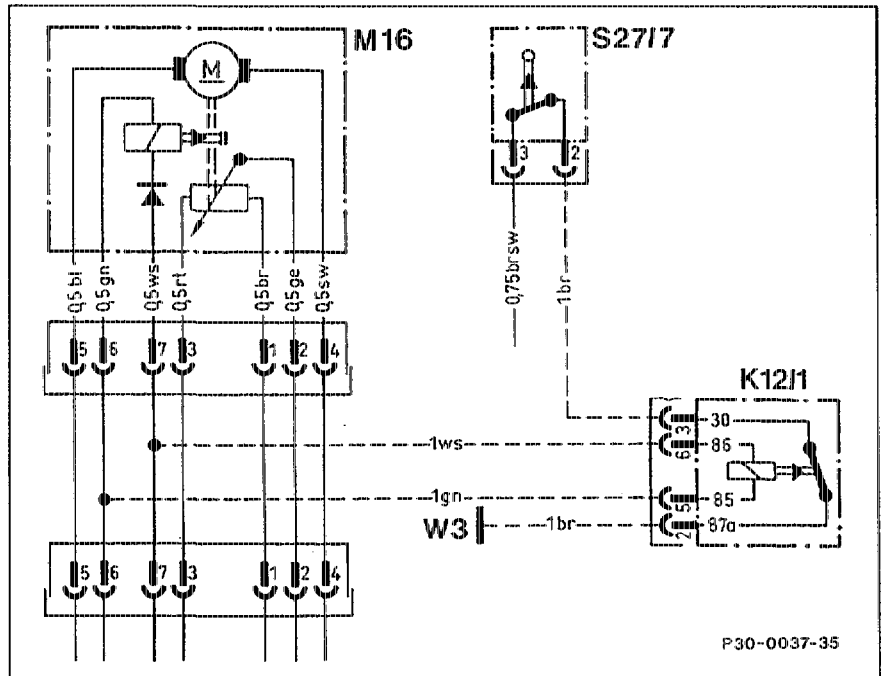
Harness for model 201

Note

Insert loose plug-in sockets on 8-pole intermediate plug into layouts 1 to 5.

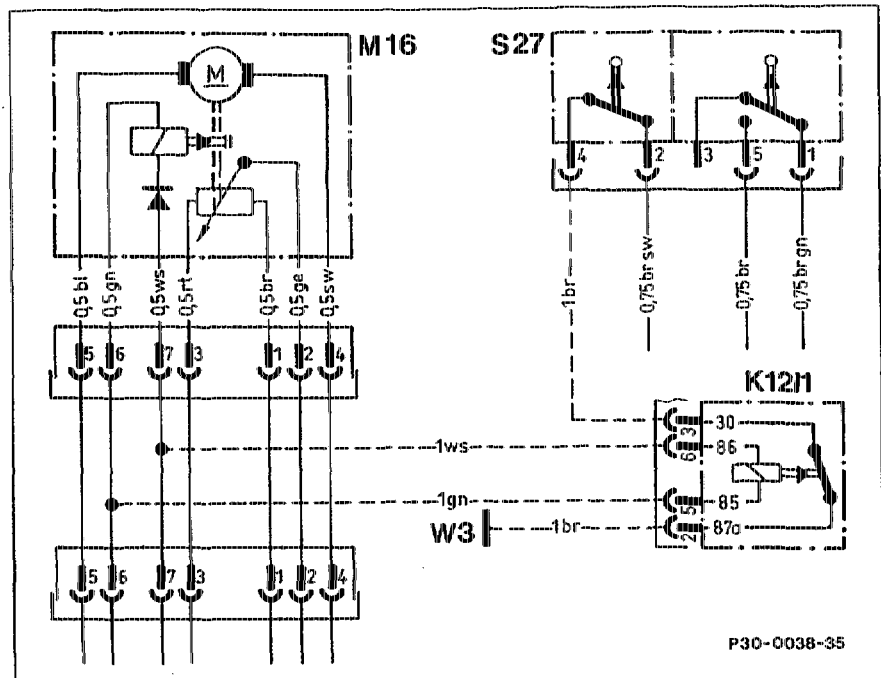
Wiring diagram model 124 (vehicles without refrigerant compressor)

- K12/1 Relay, Tempomat/cruise control boost air cut-off
- M16 Tempomat/cruise control (TPM) actuator
- S2777 Boost pressure cut-out microswitch
- W3 Ground, left front wheelhouse (at ignition coil)



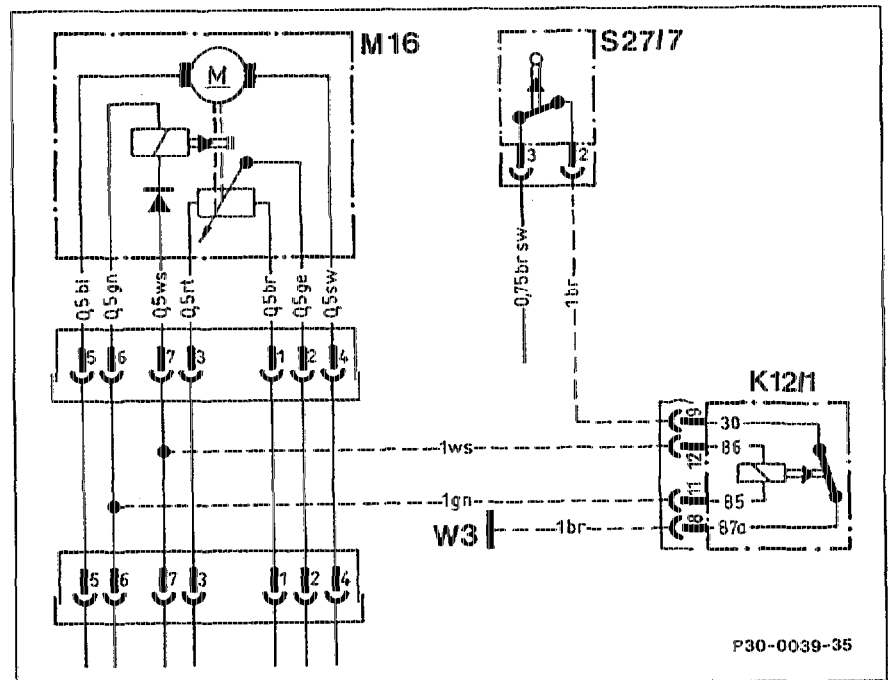
**Wiring diagram
model 124 (vehicles
with refrigerant
compressor)**

- K12/1 Relay, Tempomat/cruise control boost air cut-off
- M16 Tempomat/cruise control (TPM) actuator
- S27 A/C compressor/boost pressure cut-out microswitch
- W3 Ground, left front wheelhouse (at ignition coil)



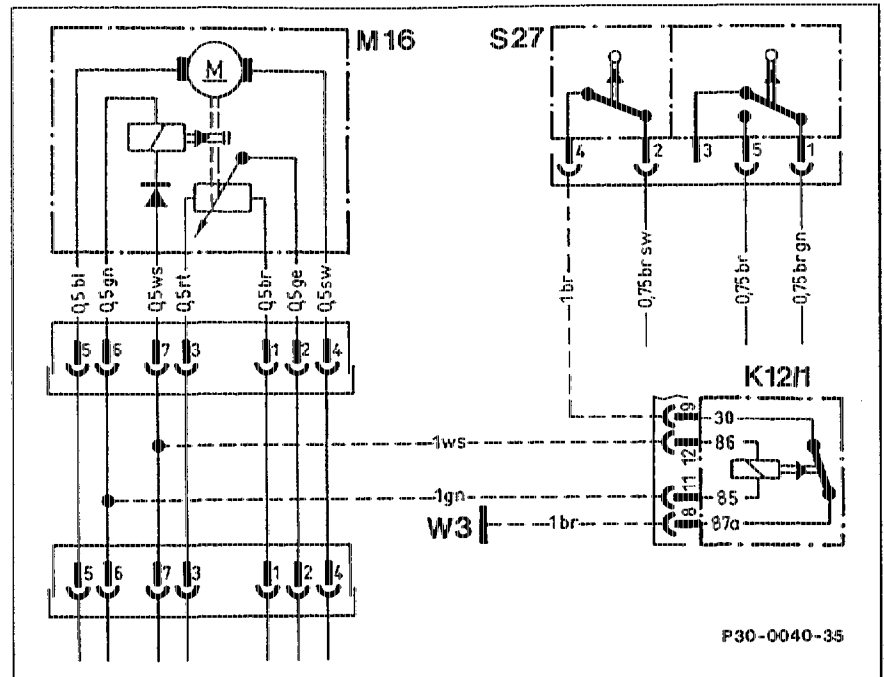
**Wiring diagram
model 201 (vehicles
without refrigerant
compressor)**

- K12/1 Relay, Tempomat/cruise control boost air cut-off
- M16 Tempomat/cruise control (TPM) actuator
- S27/7 Boost pressure cut-out microswitch
- W3 Ground, left front wheelhouse (at ignition coil)



**Wiring diagram
model 201 (vehicles
with refrigerant
compressor)**

- K12/1 Relay, Tempomat/cruise control boost air cut-off
M16 Tempomat/cruise control (TPM) actuator
S27 Boost pressure cut-out microswitch
W3 Ground, left front wheelhouse (at ignition coil)



D. Parts list

Number	Designation	Part No.
1	Relay	001 542 61 19
1	Connector housing, 8fold	009 545 76 28
1	Cover	009 545 77 28
1	Connector housing, 6fold (model 124)	126 545 01 28
1	Connector housing, 12fold (model 201)	126 545 23 28
7	Plug-in sockets dia. 4 mm	010 545 52 28
4	Jack dia. 4 mm	003 545 26 26
1	Jack dia. 2.5 mm	002 545 99 26
1	Screw M6 x 16	000 965 006 015
1	Washer A 6.4	000 125 006 421
1	Nut M6 (201 only)	000 934 006 013
1	Cable shoe dia. 6.3 mm	--
2 m	Line 1 mm ² green	--
2 m	Line 1 mm ² white	--
5 m	Line 1 mm ² brown (124)	--
6 m	Line 1 mm ² brown (201)	--